

6

5

4

3

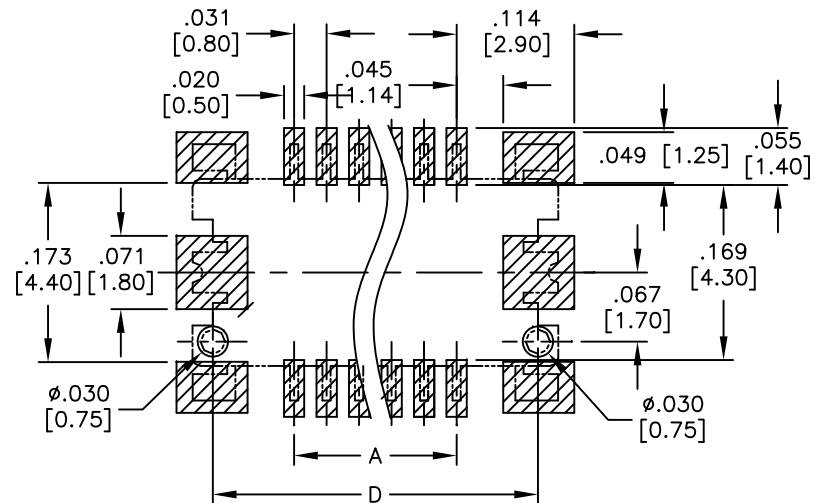
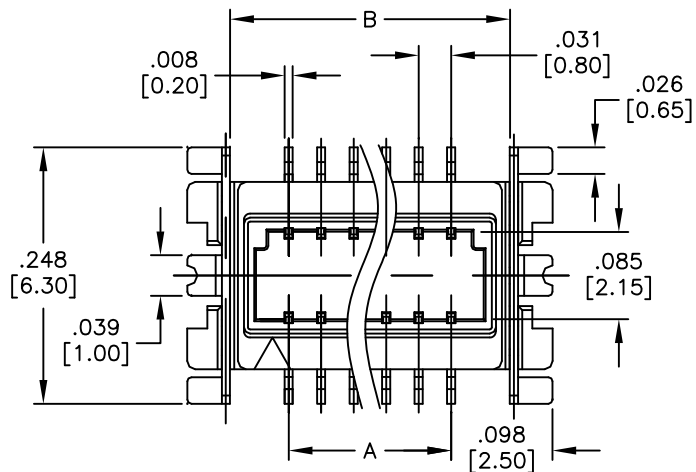
2

1

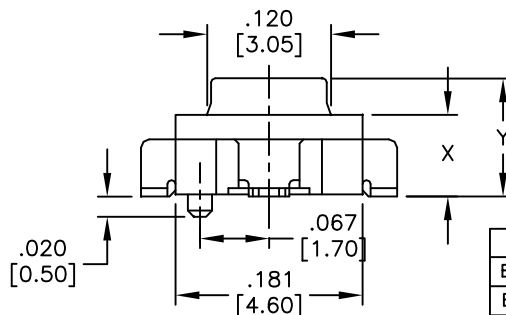
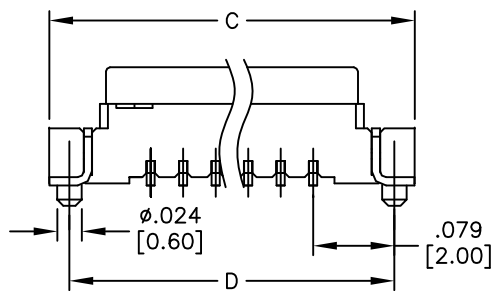
APPROVED: \_\_\_\_\_

DATE: \_\_\_\_\_ TITLE: \_\_\_\_\_

Rev	AWO #	Description	Date	Appr
-		RELEASED	12/03/10	



RECOMMENDED PCB LAYOUT



PACKAGED ON TAPE & REEL

ADAM P/N	X	Y
BB8-PEA-XX-G-3.60-T/R	.106 [2.70]	.142 [3.60]
BB8-PEA-XX-G-2.90-T/R	.079 [2.00]	.114 [2.90]

SPECIFICATIONS:

Material:  
 Insulator: Hi-temp thermoplastic, rated UL 94V-0  
 Insulator color: Natural  
 Contacts: Copper Alloy  
 Hold down: Copper Alloy  
 Plating:  
 Gold flash over Nickel underplate overall.  
 Electrical:  
 Operating voltage: 50 VAC max  
 Current rating: 0.5 Amps max  
 Contact resistance: 30 mohms max. initial  
 Insulation resistance: 500 Mohms min  
 Environmental:  
 Lead free, RoHS compliant  
 Recommended soldering temp: 260°C for 5 seconds



Positions: 10 thru 30

A = .031 [0.80] x (No. of Contacts per row - 1)  
 B = .031 [0.80] x (No. of Contacts per row - 1) + .063 [1.60]  
 C = .031 [0.80] x (No. of Contacts per row - 1) + .197 [5.00]  
 D = .031 [0.80] x (No. of Contacts per row - 1) + .157 [4.00]

UNLESS OTHERWISE SPECIFIED ALL DIMENSIONS ARE INCHES [MM] TOLERANCES: EXCEPT AS NOTED	
INCHES	HOLES
.X ± .10	∅X ± .10
.XX ± .020	∅XX ± .015
.XXX ± .015	∅XXX ± .010
APPROVALS	
DRAWN	DY
CHECKED	DATE
APPROVED	12/03/10



TITLE  
 .031 [0.80] BOARD TO BOARD PLUG, SMT TYPE  
 STACKING HEIGHT=3.5MM, 4.2MM

SIZE	PART NO.	REV.
X	BB8-PEA-XX-G-X.XX-T/R	-
REF: S00128T	SCALE: NTS	SHEET 1 OF 1

6

5

4

3

2

1