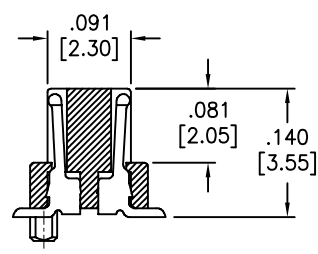
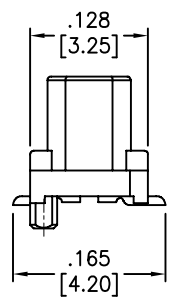
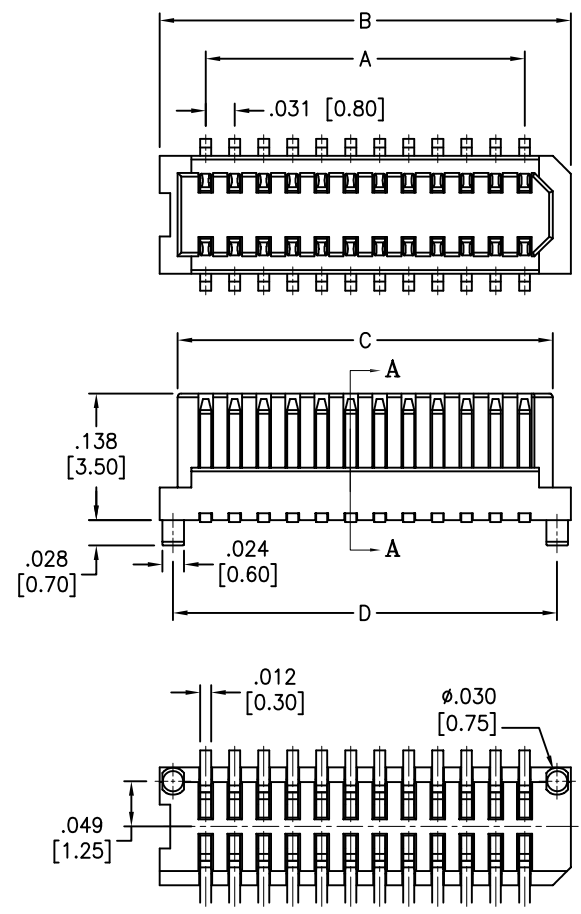
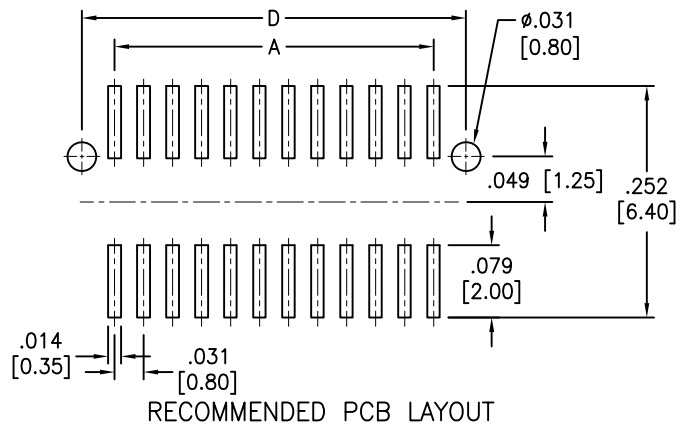


Rev	AWO #	Description	Date	Appr
-		RELEASED	9/19/12	

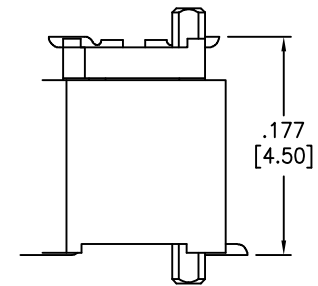
APPROVED: \_\_\_\_\_  
DATE: \_\_\_\_\_ TITLE: \_\_\_\_\_



SECTION A-A



RECOMMENDED PCB LAYOUT



MATING HEIGHT 4.50MM

**SPECIFICATIONS:**  
Material:  
Insulator: Hi-temp thermoplastic, rated UL 94V-0  
Insulator color: White  
Contacts: Phosphor Bronze  
Plating:  
Gold flash over Nickel underplate overall  
Electrical:  
Voltage rating: 50 V AC/DC max.  
Current rating: 0.5 A AC/DC max.  
Contact resistance: 40 mohms max. initial  
Insulation resistance: 500 Mohms min.  
Dielectric withstanding voltage: 250 VAC for 1 minute  
Temperature Rating:  
Operating temperature: -25°C to +85°C  
Environmental:  
Lead free, RoHS compliant



PACKAGED ON TAPE & REEL

Positions: 10 Thru 100  
A = .031 [0.80] x Spaces per row  
B = .031 [0.80] x Spaces per row + .100 [2.55]  
C = .031 [0.80] x Spaces per row + .061 [1.55]  
D = .031 [0.80] x Spaces per row + .071 [1.80]

UNLESS OTHERWISE SPECIFIED ALL DIMENSIONS ARE INCHES [MM] TOLERANCES: EXCEPT AS NOTED		
INCHES HOLES		
.X ± .10	∅X ± .10	
.XX ± .020	∅XX ± .015	
.XXX ± .015	∅XXX ± .010	
APPROVALS		
DRAWN	AY	DATE
CHECKED	GH	9/19/12
APPROVED		

TITLE: .031 [0.80] BOARD TO BOARD PLUG  
3.55MM HEIGHT, SMT TYPE

SIZE X	PART NO. BB8-PD-XXX-G-355-T/R	REV. -
REF: S00167T	SCALE: NTS	SHEET 1 OF 1

6 5 4 3 2 1

D

C

B

A

D

C

B

A

6 5 4 3 2 1