

6

5

4

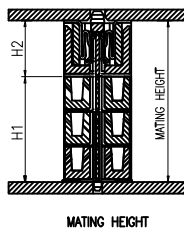
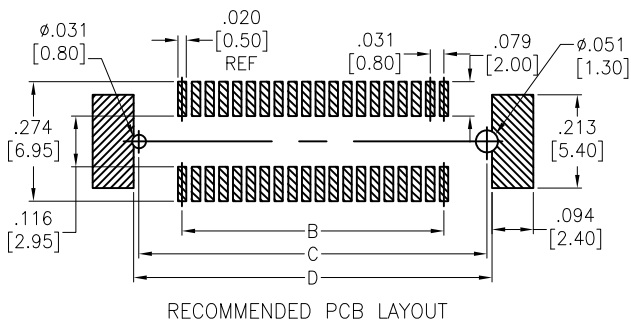
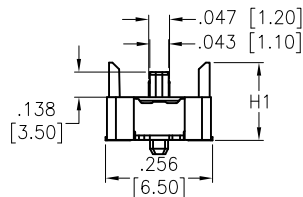
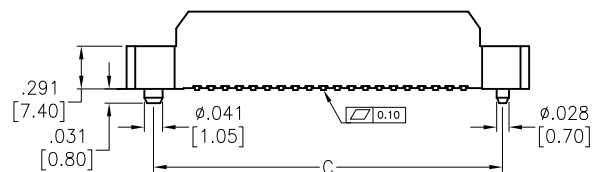
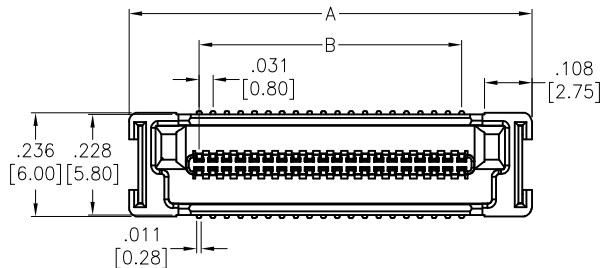
3

2

1

APPROVED: _____
 DATE: _____ TITLE: _____

Rev	AWO #	Description	Date	Appr
-		RELEASED	4/23/21	



ADAM P/N	BB8-PAT (H1)	H2	Mating Height
BB8-PAT-XXX-SGM-4.50	.177 [4.50]	.157 [4.00]	.197 [5.00]
BB8-PAT-XXX-SGM-7.50	.295 [7.50]	.157 [4.00]	.315 [8.00]
BB8-PAT-XXX-SGM-4.50A	.177 [4.50]	.354 [9.00]	.394 [10.00]
BB8-PAT-XXX-SGM-7.50A	.295 [7.50]	.354 [9.00]	.512 [13.00]
BB8-PAT-XXX-SGM-9.50	.374 [9.50]	.354 [9.00]	.591 [15.00]
BB8-PAT-XXX-SGM-12.50	.492 [12.50]	.354 [9.00]	.732 [18.00]
BB8-PAT-XXX-SGM-14.50	.571 [14.50]	.354 [9.00]	.787 [20.00]
BB8-PAT-XXX-SGM-17.50	.689 [17.50]	.354 [9.00]	.906 [23.00]
BB8-PAT-XXX-SGM-19.50	.768 [19.50]	.354 [9.00]	.984 [25.00]

Positions: 10, 20, 30, 40, 50, 60, 70, 80, 100, 120, 140
 140, 160, 180, 200

A = .031 [0.80] x No. of Spaces + .319 [8.10]

B = .031 [0.80] x No. of Spaces

C = .031 [0.80] x No. of Spaces + .197 [5.00]

D = .031 [0.80] x No. of Spaces + .220 [5.60]

SPECIFICATIONS:

Material:
 Insulator: Hi-temp thermoplastic, rated UL 94V-0
 Insulator color: Black

Contacts: Phosphor Bronze

Plating:
 Gold Flash over Nickel underplate on contact area,
 Matte Tin over Nickel underplate on solder tails

Temperature Rating:
 Operating temperature: -55°C to +105°C

Environmental:
 Lead free, RoHS compliant



UNLESS OTHERWISE SPECIFIED ALL DIMENSIONS ARE INCHES [MM]. TOLERANCES: EXCEPT AS NOTED

INCHES		HOLES	
.x	± .10	∅x	± .10
.xx	± .020	∅xx	± .015
.xxx	± .015	∅xxx	± .010



DRAWN	LH	4/23/21
CHECKED	LW	4/23/21
APPROVED		

TITLE
 .031 [0.80] BOARD TO BOARD PLUG
 SMT TYPE, SEL GOLD MATTE TIN PLATED

THIS DRAWING CONTAINS INFORMATION THAT IS PROPRIETARY AND SHOULD NOT BE USED WITHOUT PRIOR WRITTEN PERMISSION FROM ADAM TECH

SIZE X	PART NO. BB8-PAT-XXX-SGM-X.XXX	REV. -
-----------	-----------------------------------	-----------

REF: S00181C	SCALE: NTS	SHEET 1 OF 1
--------------	------------	--------------

6

5

4

3

2

1