

6

5

4

3

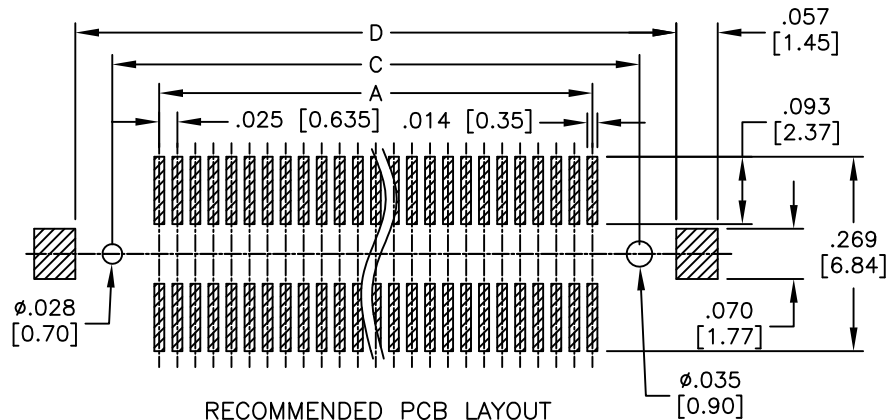
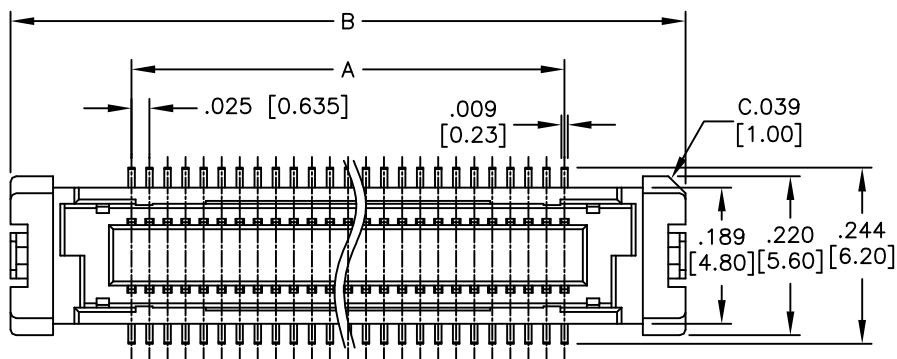
2

1

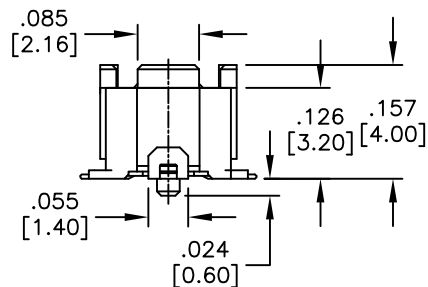
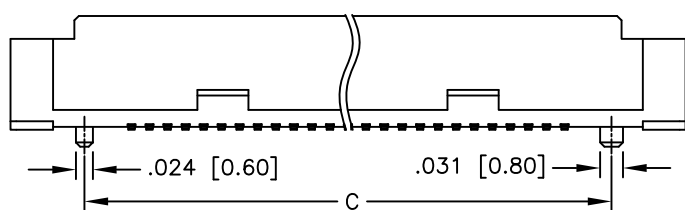
APPROVED: _____

DATE: _____ TITLE: _____

Rev	AWO #	Description	Date	Appr
-		RELEASED	12/08/10	



RECOMMENDED PCB LAYOUT



PACKAGED ON TAPE & REEL

Positions: 20, 30, 40, 50

- A = .025 [0.635] x (No. of Contacts per row - 1)
- B = .025 [0.635] x (No. of Contacts per row - 1) + .335 [8.50]
- C = .025 [0.635] x (No. of Contacts per row - 1) + .130 [3.31]
- D = .025 [0.635] x (No. of Contacts per row - 1) + .233 [5.91]

SPECIFICATIONS:

Material:
 Insulator: Hi-temp thermoplastic, rated UL 94V-0
 Insulator color: Natural
 Contacts: Copper Alloy
 Hold down: Copper Alloy
 Plating:
 Gold flash over Nickel underplate overall.
 Electrical:
 Operating voltage: 100 VAC max
 Current rating: 0.5A per contact
 Contact resistance: 40 mohms max. initial
 Insulation resistance: 1000 Mohms min
 Environmental:
 Lead free, RoHS compliant



UNLESS OTHERWISE SPECIFIED
 ALL DIMENSIONS ARE INCHES [MM]
 TOLERANCES: EXCEPT AS NOTED

INCHES	HOLES
.X ± .10	∅X ± .10
.XX ± .020	∅XX ± .015
.XXX ± .015	∅XXX ± .010



APPROVALS		DATE		TITLE	
DRAWN	DY	12/08/10		.025 [0.635] BOARD TO BOARD SOCKET, SMT TYPE, 4.00 HEIGHT	
CHECKED		SIZE	PART NO.	REV.	
APPROVED		X	BB635-SE-XX-G-4.00-T/R	-	
REF: S00128T		SCALE: NTS	SHEET 1 OF 1		

6

5

4

3

2

1