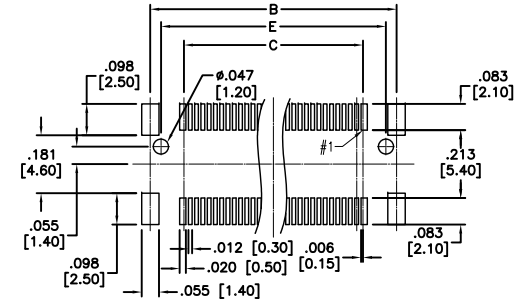
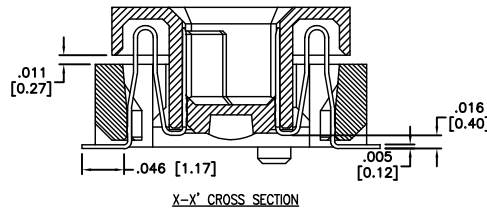
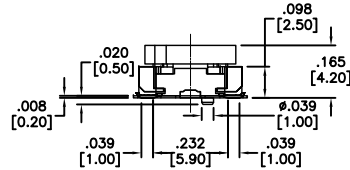
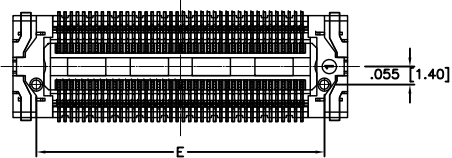
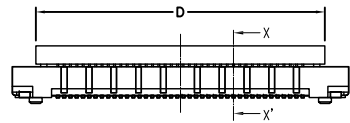
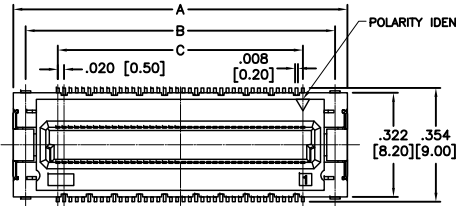
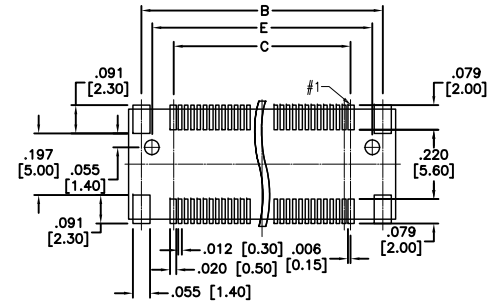


APPROVED: _____
 DATE: _____ TITLE: _____

Rev	AWO #	Description	Date	Appr
-	11843	RELEASED	12/12/11	



PRINTED CIRCUIT BOARD LAYOUT (COMPONENT SIDE VIEW)
 PLUG FOR 30, 40, 50 CONTACT



PRINTED CIRCUIT BOARD LAYOUT (COMPONENT SIDE VIEW)
 PLUG FOR 60, 80, 100, 120, 140 CONTACT

ADAM P/N	A	B	C	D	E
BB5-SM-030-G-4.20-T/R	.559 [14.20]	.480 [12.20]	.276 [7.00]	.413 [10.50]	.413 [10.50]
BB5-SM-040-G-4.20-T/R	.657 [16.70]	.579 [14.70]	.374 [9.50]	.512 [13.00]	.512 [13.00]
BB5-SM-050-G-4.20-T/R	.756 [19.20]	.677 [17.20]	.472 [12.00]	.610 [15.50]	.610 [15.50]
BB5-SM-060-G-4.20-T/R	.854 [21.70]	.776 [19.70]	.571 [14.50]	.709 [18.00]	.709 [18.00]
BB5-SM-080-G-4.20-T/R	1.051 [26.70]	.972 [24.70]	.768 [19.50]	.906 [23.00]	.906 [23.00]
BB5-SM-090-G-4.20-T/R	1.150 [29.20]	1.071 [27.20]	.866 [22.00]	1.004 [25.50]	1.004 [25.50]
BB5-SM-100-G-4.20-T/R	1.248 [31.70]	1.169 [29.70]	.965 [24.50]	1.102 [28.00]	1.102 [28.00]
BB5-SM-120-G-4.20-T/R	1.445 [36.70]	1.366 [34.70]	1.161 [29.50]	1.299 [33.00]	1.299 [33.00]
BB5-SM-140-G-4.20-T/R	1.642 [41.70]	1.563 [39.70]	1.358 [34.50]	1.496 [38.00]	1.496 [38.00]

SPECIFICATIONS:

Material:
 Insulator: LCP, glass filled, rated UL 94V-0
 Insulator color: Black
 Contacts: Copper alloy
 Retention Clip: Copper alloy, gold plated
 Plating:
 Gold over Nickel underplate overall
 Electrical:
 Current rating: 0.4 Amps.
 Contact resistance: 80 mohms max.
 Insulation resistance: 100 Mohms min. @ DC 250V
 Dielectric withstanding voltage: 250 VAC for 1 minute
 Temperature Rating:
 Operating temperature: -40°C to +85°C
 Environmental:
 Lead free, RoHS compliant
 Recommended soldering temp: 260°C for 5 seconds



PACKAGED ON TAPE & REEL

UNLESS OTHERWISE SPECIFIED ALL DIMENSIONS ARE MM TOLERANCES: EXCEPT AS NOTED		
INCHES HOLES		
.X ± .10	∅X ± .10	
.XX ± .020	∅XX ± .015	
.XXX ± .015	∅XXX ± .010	
APPROVALS		DATE
DRAWN	AY	12/12/11
CHECKED	NP	12/12/11
APPROVED		



TITLE .020 [0.50] BOARD TO BOARD FEMALE SURFACE MOUNT		
SIZE X	PART NO. BB5-SM-XXX-G-4.20-T/R	REV. -
REF: S00206T	SCALE: NTS	SHEET 1 OF 1