

6

5

4

3

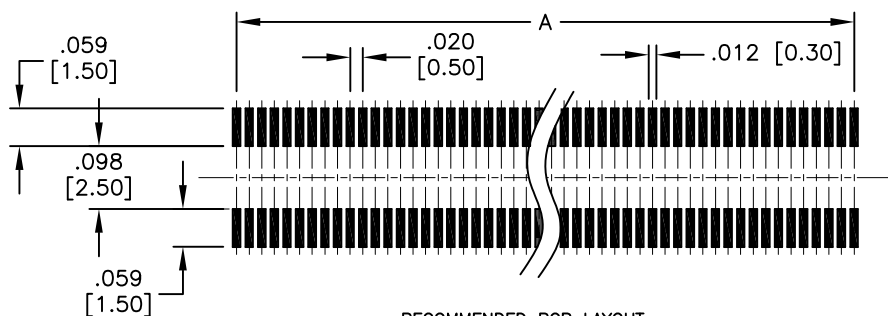
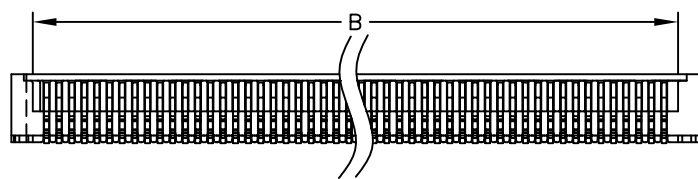
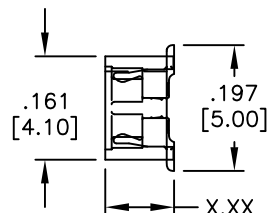
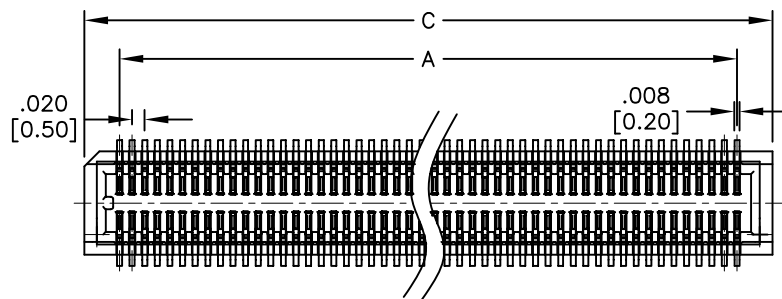
2

1

APPROVED: \_\_\_\_\_

DATE: \_\_\_\_\_ TITLE: \_\_\_\_\_

Rev	AWO #	Description	Date	Appr
-		RELEASED	5/4/15	



ADAM P/N	Plug DIM. (X.XX)	DIM.(X.XX)	Mating Height
BB5-SL-XXX-G-NP-2.74-T/R	.094 [2.40]	.108 [2.74]	.138 [3.50]
BB5-SL-XXX-G-NP-2.74-T/R	.108 [2.74]	.108 [2.74]	.157 [4.00]
BB5-SL-XXX-G-NP-3.70-T/R	.094 [2.40]	.146 [3.70]	.177 [4.50]
BB5-SL-XXX-G-NP-3.70-T/R	.108 [2.74]	.146 [3.70]	.197 [5.00]

Mated with: BB5-PL-XXX-G-NP-X.XX-T/R

SPECIFICATIONS:

Material:  
 Insulator: Hi-Temp thermoplastic, rated UL 94V-0  
 Insulator color: Black  
 Contacts: Copper Alloy  
 Plating:  
 Gold flash over Nickel underplate overall  
 Electrical:  
 Operating voltage: 50 VAC max.  
 Current rating: 0.5 Amps max.  
 Contact resistance: 40 mohms max. initial  
 Insulation resistance: 100 Mohms min@ 100V DC  
 Dielectric withstanding voltage: 500 VAC for 1 minute  
 Temperature Rating:  
 Operating temperature: -20°C to +105°C  
 Environmental:  
 Lead free, RoHS compliant



PACKAGED ON TAPE & REEL

Position: 20 thru 100  
 A = .020 [0.50] x (No. of Contacts/2 - 1)  
 B = .020 [0.50] x (No. of Contacts/2 - 1) + .043 [1.10]  
 C = .020 [0.50] x (No. of Contacts/2 - 1) + .110 [2.80]

UNLESS OTHERWISE SPECIFIED ALL DIMENSIONS ARE INCHES [MM] TOLERANCES: EXCEPT AS NOTED		
INCHES		HOLES
.X ± .10	Ø.X ± .10	
.XX ± .020	Ø.XX ± .015	
.XXX ± .015	Ø.XXX ± .010	
APPROVALS		DATE
DRAWN	AY	5/4/15
CHECKED	YC	5/4/15
APPROVED		



TITLE  
 .020 [0.50] PITCH BOARD TO BOARD  
 SOCKET CONNECTOR, NO PEG, SMT TYPE

SIZE	PART NO.	REV.
X	BB5-SL-XXX-G-NP-X.XX-T/R	-
REF: S00070T	SCALE: NTS	SHEET 1 OF 1

6

5

4

3

2

1