

6

5

4

3

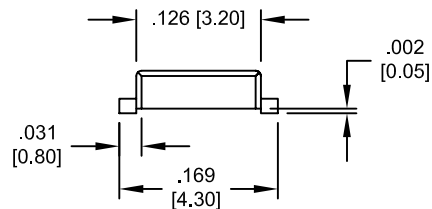
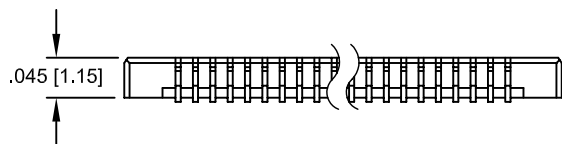
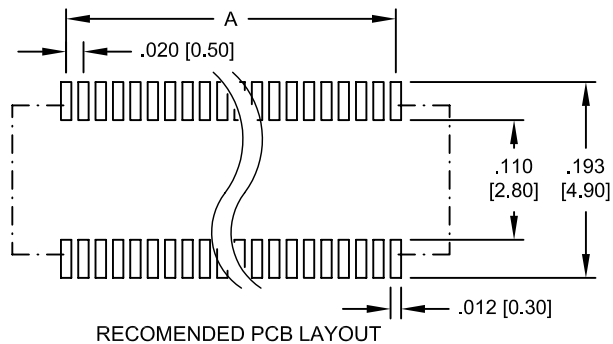
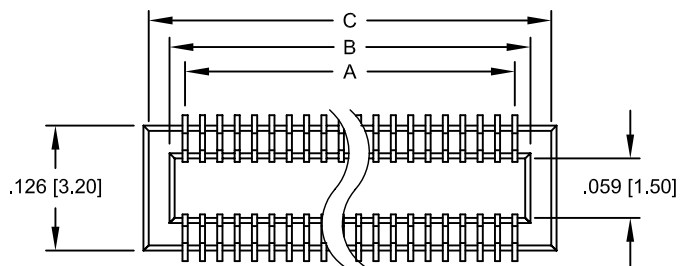
2

1

APPROVED: _____

DATE: _____ TITLE: _____

Rev	AWO #	Description	Date	Appr
-		RELEASED	10/21/04	



A = .020 [0.50] X (No. of Contacts - 1)
 B = .020 [0.50] X (No. of Contacts - 1) + .041 [1.05]
 C = .020 [0.50] X (No. of Contacts - 1) + .079 [2.00]

Available Positions: 20, 28, 30, 40, 50, 60, 70, 80 & 90

SPECIFICATIONS:

Material:
 Insulator: LCP, glass reinforced, rated UL 94V-0
 Insulator color: Natural
 Contacts: Phosphor Bronze
 Plating:
 Gold Flash over Nickel underplate overall
 Electrical:
 Operating voltage: 50 VAC max
 Current rating: 0.3 Amps max
 Contact resistance: 40 mohms max
 Insulation resistance: 1000 Mohms min @ 500 VDC
 Dielectric withstanding voltage: 500 VAC for 1 minute
 Temperature Rating:
 Operating temperature: -65°C to +155°C

UNLESS OTHERWISE SPECIFIED
 ALL DIMENSIONS ARE INCHES [MM]
 TOLERANCES: EXCEPT AS NOTED

INCHES		HOLES	
.X	± .10	∅.X	± .10
.XX	± .020	∅.XX	± .015
.XXX	± .015	∅.XXX	± .010



TITLE: 0.5mm BOARD TO BOARD CONNECTOR
 FEMALE, 20 THRU 90 POSITIONS, SMT

APPROVALS		DATE
DRAWN	SS	10/21/04
CHECKED		
APPROVED		

SIZE X	PART NO. BB5-S-XX	REV. -
REF:	SCALE: NTS	SHEET 1 OF 1

6

5

4

3

2

1