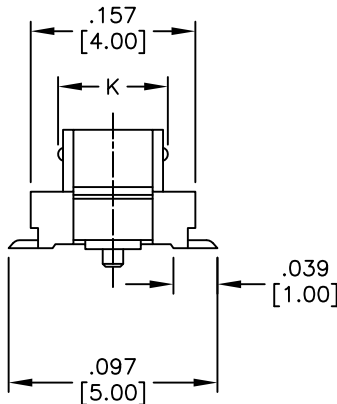
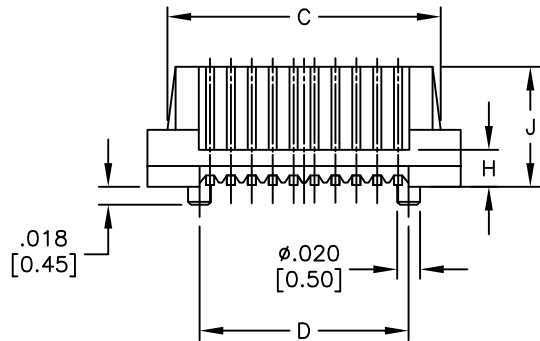
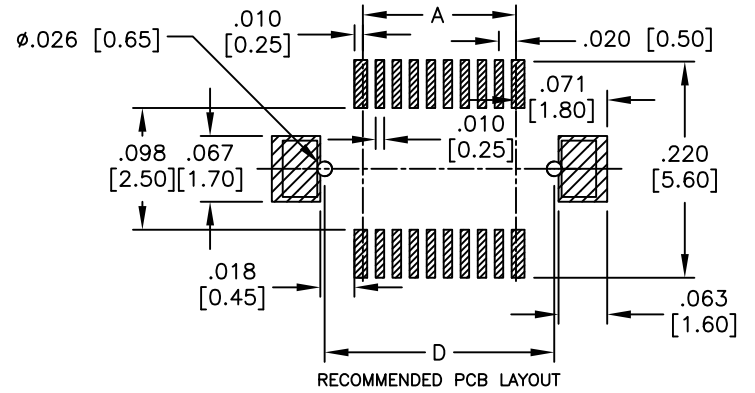
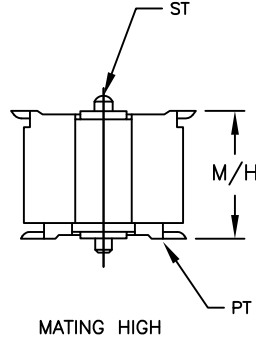
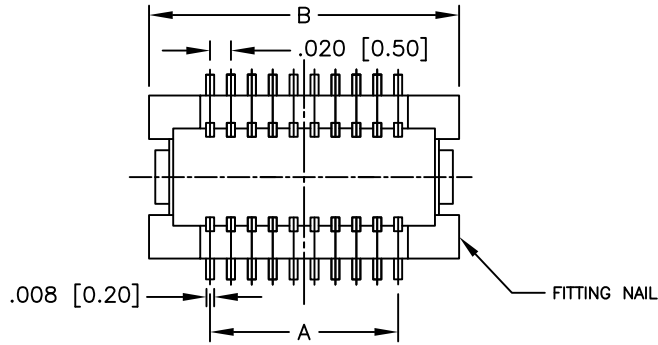


APPROVED: _____
 DATE: _____ TITLE: _____

Rev	AWO #	Description	Date	Appr
-		RELEASED	8/23/10	



Mating Height	Dim. H	Dim. J	Dim. K
.079 [2.00]		.064 [1.62]	
.098 [2.50]	.020 [0.50]	.079 [2.00]	
.118 [3.00]			
.138 [3.50]			
.157 [4.00]			
.197 [5.00]			.102 [2.60]
.236 [6.00]			
.276 [7.00]	.039 [1.00]	.118 [3.00]	
.315 [8.00]			
.354 [9.00]			
.394 [10.00]			
.433 [11.00]			
.472 [12.00]			
.512 [13.00]			
.551 [14.00]			
.591 [15.00]	.059 [1.50]	.138 [3.50]	.102 [2.60]
.630 [16.00]			
.669 [17.00]			
.708 [18.00]			
.747 [19.00]			
.786 [20.00]			
.825 [21.00]			
.864 [22.00]			
.903 [23.00]			
.942 [24.00]			
.981 [25.00]			
1.020 [26.00]			
1.059 [27.00]	.276 [7.00]	.394 [10.00]	.100 [2.54]
1.098 [28.00]			
1.137 [29.00]			
1.176 [30.00]			
1.215 [31.00]			
1.254 [32.00]			
1.293 [33.00]			
1.332 [34.00]			
1.371 [35.00]			
1.410 [36.00]			
1.449 [37.00]			
1.488 [38.00]			
1.527 [39.00]			
1.566 [40.00]			
1.605 [41.00]			
1.644 [42.00]			
1.683 [43.00]			
1.722 [44.00]			
1.761 [45.00]			
1.800 [46.00]			
1.839 [47.00]			
1.878 [48.00]			
1.917 [49.00]			
1.956 [50.00]			
1.995 [51.00]			
2.034 [52.00]			
2.073 [53.00]			
2.112 [54.00]			
2.151 [55.00]			
2.190 [56.00]			
2.229 [57.00]			
2.268 [58.00]			
2.307 [59.00]			
2.346 [60.00]			
2.385 [61.00]			
2.424 [62.00]			
2.463 [63.00]			
2.502 [64.00]			
2.541 [65.00]			
2.580 [66.00]			
2.619 [67.00]			
2.658 [68.00]			
2.697 [69.00]			
2.736 [70.00]			
2.775 [71.00]			
2.814 [72.00]			
2.853 [73.00]			
2.892 [74.00]			
2.931 [75.00]			
2.970 [76.00]			
3.009 [77.00]			
3.048 [78.00]			
3.087 [79.00]			
3.126 [80.00]			
3.165 [81.00]			
3.204 [82.00]			
3.243 [83.00]			
3.282 [84.00]			
3.321 [85.00]			
3.360 [86.00]			
3.399 [87.00]			
3.438 [88.00]			
3.477 [89.00]			
3.516 [90.00]			
3.555 [91.00]			
3.594 [92.00]			
3.633 [93.00]			
3.672 [94.00]			
3.711 [95.00]			
3.750 [96.00]			
3.789 [97.00]			
3.828 [98.00]			
3.867 [99.00]			
3.906 [100.00]			
3.945 [101.00]			
3.984 [102.00]			
4.023 [103.00]			
4.062 [104.00]			
4.101 [105.00]			
4.140 [106.00]			
4.179 [107.00]			
4.218 [108.00]			
4.257 [109.00]			
4.296 [110.00]			
4.335 [111.00]			
4.374 [112.00]			
4.413 [113.00]			
4.452 [114.00]			
4.491 [115.00]			
4.530 [116.00]			
4.569 [117.00]			
4.608 [118.00]			
4.647 [119.00]			
4.686 [120.00]			
4.725 [121.00]			
4.764 [122.00]			
4.803 [123.00]			
4.842 [124.00]			
4.881 [125.00]			
4.920 [126.00]			
4.959 [127.00]			
4.998 [128.00]			
5.037 [129.00]			
5.076 [130.00]			
5.115 [131.00]			
5.154 [132.00]			
5.193 [133.00]			
5.232 [134.00]			
5.271 [135.00]			
5.310 [136.00]			
5.349 [137.00]			
5.388 [138.00]			
5.427 [139.00]			
5.466 [140.00]			
5.505 [141.00]			
5.544 [142.00]			
5.583 [143.00]			
5.622 [144.00]			
5.661 [145.00]			
5.700 [146.00]			
5.739 [147.00]			
5.778 [148.00]			
5.817 [149.00]			
5.856 [150.00]			
5.895 [151.00]			
5.934 [152.00]			
5.973 [153.00]			
6.012 [154.00]			
6.051 [155.00]			
6.090 [156.00]			
6.129 [157.00]			
6.168 [158.00]			
6.207 [159.00]			
6.246 [160.00]			
6.285 [161.00]			
6.324 [162.00]			
6.363 [163.00]			
6.402 [164.00]			
6.441 [165.00]			
6.480 [166.00]			
6.519 [167.00]			
6.558 [168.00]			
6.597 [169.00]			
6.636 [170.00]			
6.675 [171.00]			
6.714 [172.00]			
6.753 [173.00]			
6.792 [174.00]			
6.831 [175.00]			

PACKAGED ON TAPE & REEL

SPECIFICATIONS:
 Material:
 Insulator: Hi-Temp thermoplastic, rated UL 94V-0
 Insulator color: Black
 Contacts: Copper Alloy
 Plating:
 Gold flash over Nickel underplate on mating area, Tin over Copper underplate on tails
 Electrical:
 Operating voltage: 50 VAC max.
 Current rating: 0.5 Amps max.
 Contact resistance: 30 mohms max. initial
 Insulation resistance: 100 Mohms min@ 100V DC
 Dielectric withstanding voltage: 100 VAC for 1 minute
 Temperature Rating:
 Operating temperature: -20°C to +105°C
 Environmental:
 Lead free, RoHS compliant
 Recommended soldering temp: 260°C for 5 seconds



Position: 10~98, 100, 110, 120, 130, 140, 150, 160
 A = .020 [0.50] x (No. of Contacts/2 - 1)
 B = .020 [0.50] x (No. of Contacts/2 - 1) + .118 [3.00]
 C = .020 [0.50] x (No. of Contacts/2 - 1) + .079 [2.00]
 D = .020 [0.50] x (No. of Contacts/2 - 1) + .020 [0.50]

UNLESS OTHERWISE SPECIFIED ALL DIMENSIONS ARE INCHES [MM] TOLERANCES: EXCEPT AS NOTED			
INCHES HOLES .X ± .10 Ø.X ± .10 .XX ± .020 Ø.XX ± .015 .XXX ± .015 Ø.XXX ± .010			
APPROVALS		DATE	
DRAWN	AY	8/23/10	
CHECKED	AW	8/23/10	
APPROVED			
TITLE		.020 [0.50] BOARD TO BOARD SOCKET SMT TYPE	
SIZE	PART NO.	REV.	
X	BB5-PT-XXX-SG-XX.XX-T/R	-	
REF: S00147T	SCALE: NTS	SHEET 1 OF 1	