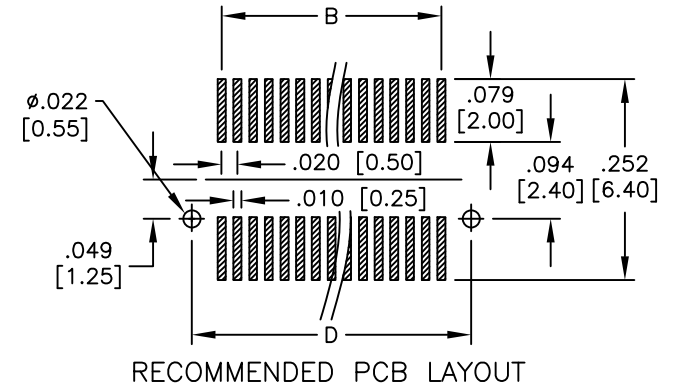
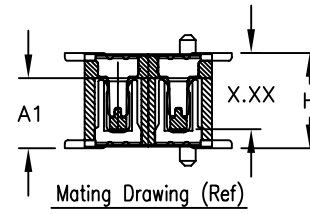
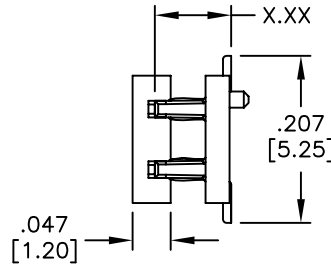
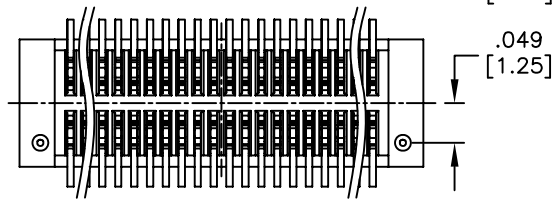
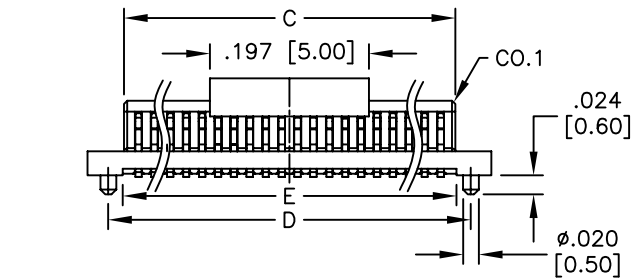
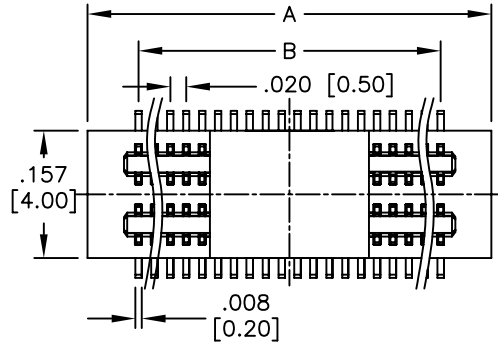


APPROVED: _____
 DATE: _____ TITLE: _____

Rev	AWO #	Description	Date	Appr
-		RELEASED	11/29/10	
A		REDRAWN	9/10/13	AY



ADAM P/N	X.XX	Socket Height (A1)	Mating Height (H)
BB5-PN-XXX-G-2.40-PP-T/R	.094 [2.40]	.087 [2.20]	.118 [3.00]
BB5-PN-XXX-G-2.90-PP-T/R	.114 [2.90]	.087 [2.20]	.138 [3.50]
		.106 [2.70]	.157 [4.00]
BB5-PN-XXX-G-3.90-PP-T/R	.154 [3.90]	.126 [3.20]	.177 [4.50]
		.118 [3.00]	.197 [5.00]
BB5-PN-XXX-G-4.40-PP-T/R	.173 [4.40]	.118 [3.00]	.217 [5.50]
		.138 [3.50]	.236 [6.00]

Mated with: BB5-SN-XXX-G-X.XX-PP-T/R

Positions: 10, 12, 14 thru 50, 60, 70, 80, 90, 100, 120

A = .020 [0.50] x (No. of Positions per row - 1) + .126 [3.20]

B = .020 [0.50] x (No. of Positions per row - 1)

C = .020 [0.50] x (No. of Positions per row - 1) + .036 [0.92]

D = .020 [0.50] x (No. of Positions per row - 1) + .074 [1.90]

E = .020 [0.50] x (No. of Positions per row - 1) + .039 [1.00]

SPECIFICATIONS:

Material:
 Insulator: Hi-temp thermoplastic, rated UL 94V-0
 Insulator color: White
 Contacts: Phosphor Bronze
 Plating:
 Gold flash over Nickel underplate overall
 Electrical:
 Operating voltage: 50 VAC max.
 Current rating: 0.5 Amps max.
 Contact resistance: 30 mohms max. initial
 Insulation resistance: 100 Mohms min.
 Dielectric withstanding voltage: 100 VAC for 1 minute
 Temperature Rating:
 Operating temperature: -20°C to +105°C
 Environmental:
 Lead free, RoHS compliant



UNLESS OTHERWISE SPECIFIED
 ALL DIMENSIONS ARE INCHES [MM]
 TOLERANCES: EXCEPT AS NOTED
 INCHES HOLES
 .X ±.10 Ø.X ±.10
 .XX ±.020 Ø.XX ±.015
 .XXX ±.015 Ø.XXX ±.010



APPROVALS		DATE
DRAWN	AY	11/29/10
CHECKED	JL	11/29/10
APPROVED		

TITLE .031 [0.50] PITCH BOARD TO BOARD PLUG, SMT TYPE		
SIZE X	PART NO. BB5-PN-XXX-G-X.XX-PP-T/R	REV. A
REF: S00056T	SCALE: NTS	SHEET 1 OF 1