

6

5

4

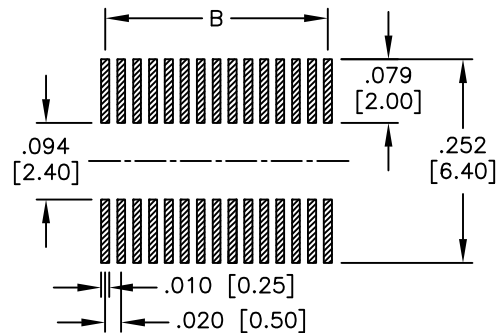
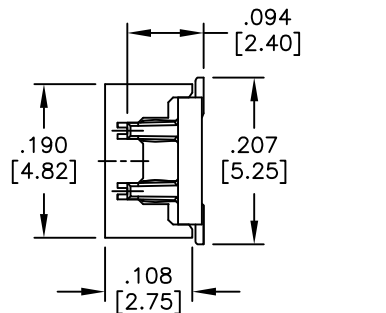
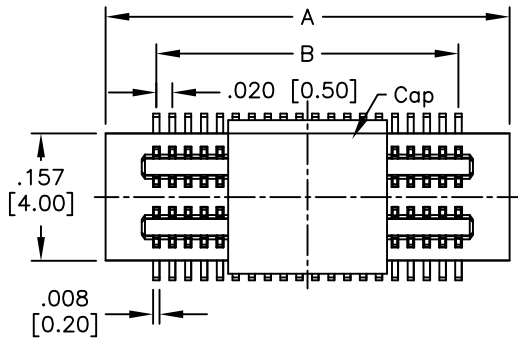
3

2

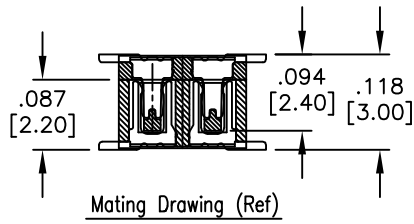
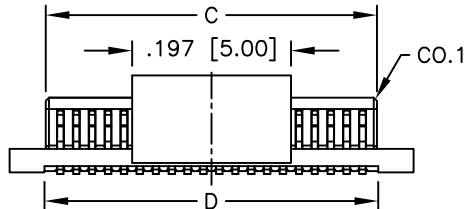
1

APPROVED: \_\_\_\_\_  
DATE: \_\_\_\_\_ TITLE: \_\_\_\_\_

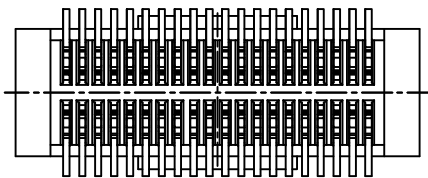
Rev	AWO #	Description	Date	Appr
-		RELEASED	7/17/15	



RECOMMENDED PCB LAYOUT



Mating Drawing (Ref)



SPECIFICATIONS:

Material:  
 Insulator: Hi-temp thermoplastic, rated UL 94V-0  
 Insulator color: White  
 Contacts: Phosphor Bronze  
 Plating:  
 Gold flash over Nickel underplate overall  
 Electrical:  
 Operating voltage: 50 VAC max.  
 Current rating: 0.5 Amps max.  
 Contact resistance: 30 mohms max. initial  
 Insulation resistance: 100 Mohms min.  
 Dielectric withstanding voltage: 100 VAC for 1 minute  
 Temperature Rating:  
 Operating temperature: -20°C to +105°C  
 Environmental:  
 Lead free, RoHS compliant



- A = .020 [0.50] x (No. of Positions per row - 1) + .126 [3.20]
- B = .020 [0.50] x (No. of Positions per row - 1)
- C = .020 [0.50] x (No. of Positions per row - 1) + .036 [0.92]
- D = .020 [0.50] x (No. of Positions per row - 1) + .039 [1.00]

UNLESS OTHERWISE SPECIFIED  
 ALL DIMENSIONS ARE INCHES [MM]  
 TOLERANCES: EXCEPT AS NOTED

INCHES		HOLES	
.X	± .10	∅.X	± .10
.XX	± .020	∅.XX	± .015
.XXX	± .015	∅.XXX	± .010



APPROVALS		DATE
DRAWN	AY	7/17/15
CHECKED	NC	7/17/15
APPROVED		

TITLE .031 [0.50] PITCH BOARD TO BOARD PLUG, SMT TYPE, NO PEG		
SIZE X	PART NO. BB5-PN-XXX-G-2.40-NP-PP-T/R	REV. -
REF: S00056T	SCALE: NTS	SHEET 1 OF 1

6

5

4

3

2

1