

6

5

4

3

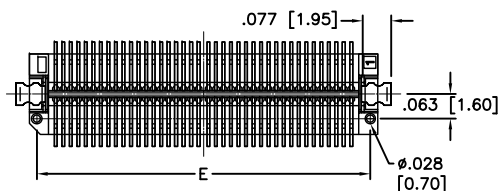
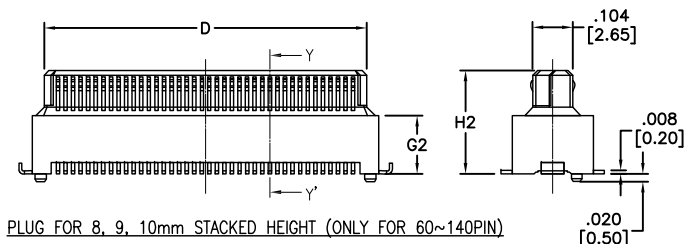
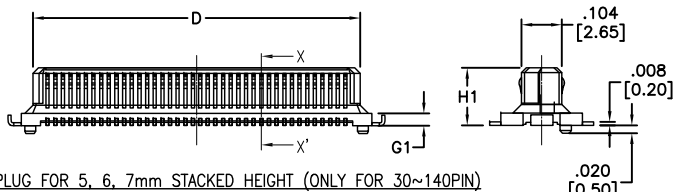
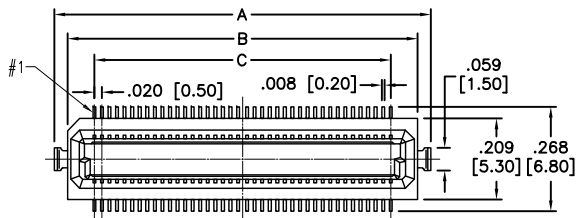
2

1

APPROVED: _____

DATE: _____ TITLE: _____

Rev	AWO #	Description	Date	Appr
-	11843	RELEASED	12/12/11	
A	11843	ADDED DIM.	1/6/12	



SPECIFICATIONS:

Material:

Insulator: LCP, glass filled, rated UL 94V-0

Insulator color: Black

Contacts: Copper alloy

Retention Clip: Copper alloy, gold plated

Plating:

Gold over Nickel underplate overall

Electrical:

Current rating: 0.4 Amps.

Contact resistance: 80 mohms max.

Insulation resistance: 100 Mohms min. @ DC 250V

Dielectric withstanding voltage: 250 VAC for 1 minute

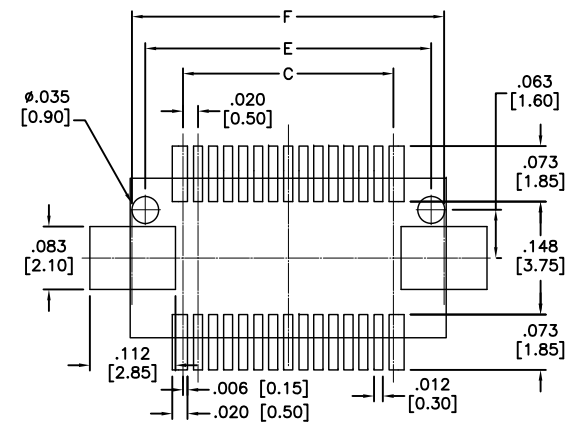
Temperature Rating:

Operating temperature: -40°C to +85°C

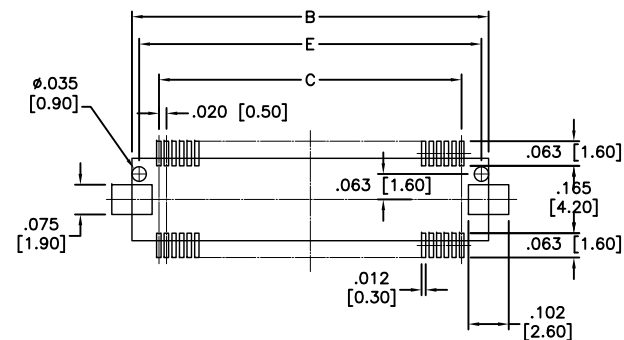
Environmental:

Lead free, RoHS compliant

Recommended soldering temp: 260°C for 5 seconds



PRINTED CIRCUIT BOARD LAYOUT (COMPONENT SIDE VIEW)
PLUG FOR 30, 40, 50 CONTACT



PRINTED CIRCUIT BOARD LAYOUT (COMPONENT SIDE VIEW)
PLUG FOR 60, 80, 100, 120, 140 CONTACT

PACKAGED ON TAPE & REEL

UNLESS OTHERWISE SPECIFIED ALL DIMENSIONS ARE MM TOLERANCES: EXCEPT AS NOTED			
INCHES HOLES			
.X ± .10	∅X ± .10	TITLE .020 [0.50] BOARD TO BOARD MALE PLUG SURFACE MOUNT	
.XX ± .020	∅XX ± .015		
.XXX ± .015	∅XXX ± .010		
APPROVALS		DATE	
DRAWN	AY	12/12/11	
CHECKED	NP	12/12/11	
APPROVED			
SIZE	PART NO.	REV.	
X	BB5-PM-XXX-G-X.XX-T/R	A	
REF:	S00206T	SCALE:	NTS
		SHEET 1 OF 2	

6

5

4

3

2

1

6

5

4

3

2

1

APPROVED: _____

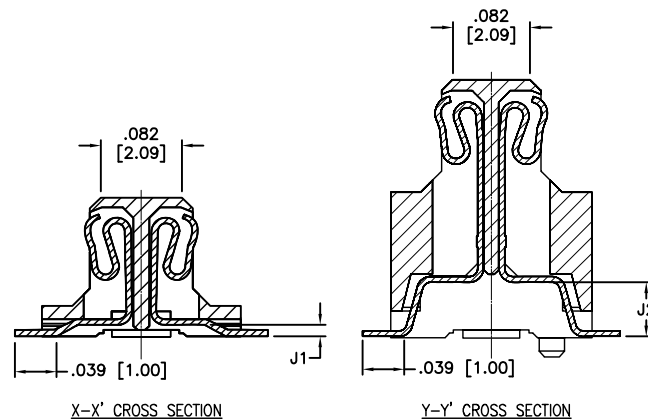
DATE: _____ TITLE: _____

Rev	AWO #	Description	Date	Appr
-----	-------	-------------	------	------

SEE SHT 1 OF 2 FOR REVISION

NO. OF CONTACT	Mating Height	Dim. G1	Dim. H1 (X.XX)	Dim. J1
30~140PIN	.197 [5.00]	.031 [0.80]	.147 [3.73]	.012 [0.30]
	.236 [6.00]	.071 [1.80]	.186 [4.73]	.051 [1.30]
	.276 [7.00]	.110 [2.80]	.226 [5.73]	.091 [2.30]

NO. OF CONTACT	Mating Height	Dim. G2	Dim. H2 (X.XX)	Dim. J2
60~140PIN	.315 [8.00]	.150 [3.80]	.265 [6.73]	.055 [1.40]
	.354 [9.00]	.189 [4.80]	.304 [7.73]	.094 [2.40]
	.394 [10.00]	.228 [5.80]	.344 [8.73]	.134 [3.40]



ADAM P/N	A	B	C	D	E	F
BB5-PM-030-G-X.XX-T/R	.480 [12.20]	.413 [10.50]	.276 [7.00]	.350 [8.90]	.374 [9.50]	.407 [10.35]
BB5-PM-040-G-X.XX-T/R	.579 [14.70]	.512 [13.00]	.374 [9.50]	.449 [11.40]	.472 [12.00]	.506 [12.85]
BB5-PM-050-G-X.XX-T/R	.677 [17.20]	.610 [15.50]	.472 [12.00]	.547 [13.90]	.571 [14.50]	.604 [15.35]
BB5-PM-060-G-X.XX-T/R	.776 [19.70]	.709 [18.00]	.571 [14.50]	.646 [16.40]	.669 [17.00]	
BB5-PM-080-G-X.XX-T/R	.972 [24.70]	.906 [23.00]	.768 [19.50]	.843 [21.40]	.866 [22.00]	
BB5-PM-100-G-X.XX-T/R	1.169 [29.70]	1.102 [28.00]	.965 [24.50]	1.039 [26.40]	1.063 [27.00]	
BB5-PM-120-G-X.XX-T/R	1.366 [34.70]	1.299 [33.00]	1.161 [29.50]	1.236 [31.40]	1.260 [32.00]	
BB5-PM-140-G-X.XX-T/R	1.563 [39.70]	1.496 [38.00]	1.358 [34.50]	1.433 [36.40]	1.457 [37.00]	

UNLESS OTHERWISE SPECIFIED
 ALL DIMENSIONS ARE MM
 TOLERANCES: EXCEPT AS NOTED
 INCHES HOLES

.X ± .10	∅X ± .10
.XX ± .020	∅XX ± .015
.XXX ± .015	∅XXX ± .010



TITLE
**.020 [0.50] BOARD TO BOARD MALE PLUG
 SURFACE MOUNT**

APPROVALS		DATE
DRAWN	AY	12/12/11
CHECKED	NP	12/12/11
APPROVED		

SIZE X	PART NO. BB5-PM-XXX-G-X.XX-T/R	REV. A
REF: S00206T	SCALE: NTS	SHEET 2 OF 2

6

5

4

3

2

1