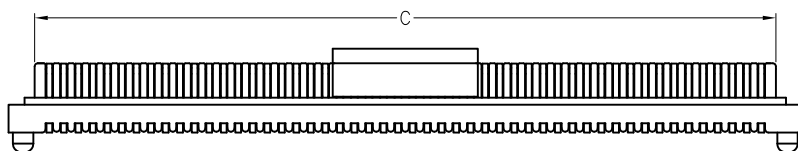
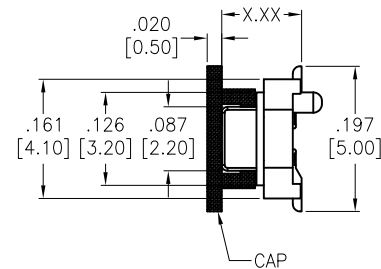
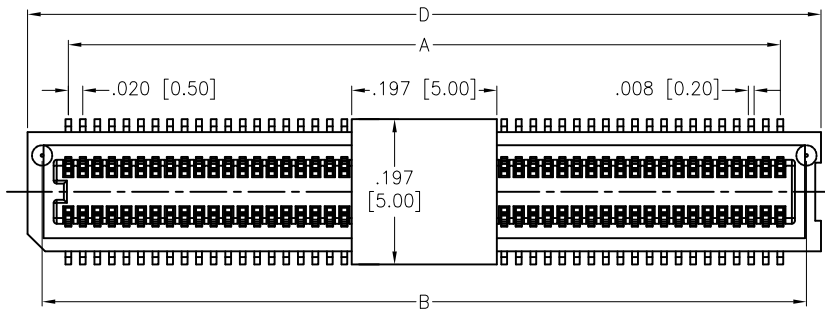


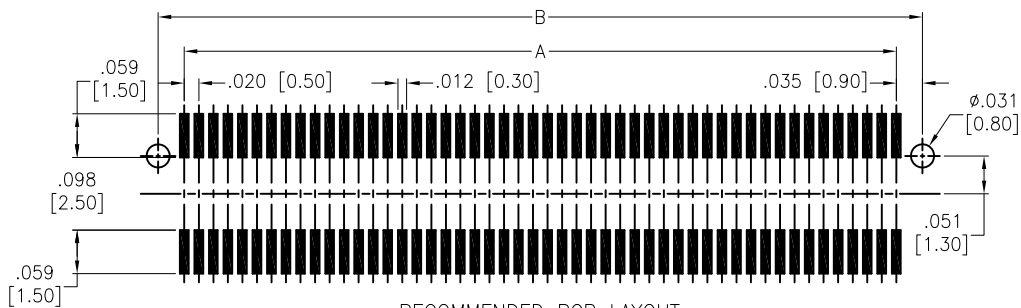
APPROVED: _____
 DATE: _____ TITLE: _____

Rev	AWO #	Description	Date	Appr
-		RELEASED	11/4/16	
A		UPDATED DRAWING	3/2/17	HR/MY



ADAM P/N	DIM. (X.XX)	SOCKET DIM.(X.XX)	Mating Height
BB5-PL-XXX-G-2.40-PP-T/R	.094 [2.40]	.108 [2.74]	.146 [3.70]
BB5-PL-XXX-G-2.40-PP-T/R	.094 [2.40]	.146 [3.70]	.183 [4.65]
BB5-PL-XXX-G-2.74-PP-T/R	.108 [2.74]	.108 [2.74]	.159 [4.05]
BB5-PL-XXX-G-2.74-PP-T/R	.108 [2.74]	.146 [3.70]	.197 [5.00]

Mated with: BB5-SL-XXX-G-X.XX-PP-T/R



RECOMMENDED PCB LAYOUT

SPECIFICATIONS:

Material:
 Insulator: Hi-Temp thermoplastic, rated UL 94V-0
 Insulator color: Black
 Contacts: Copper Alloy
 Plating:
 Gold flash over Nickel underplate overall
 Electrical:
 Voltage: 50 V
 Current: 0.5 A
 Contact resistance: 40 mohms max.
 Insulation resistance: 100 Mohms min
 Dielectric withstanding voltage: 500 VAC for 1 minute
 Temperature Rating:
 Temperature: -20°C to +105°C
 Environmental:
 Lead free, RoHS compliant



PACKAGED ON TAPE & REEL

Positions: 20 thru 100
 A= .020 [0.50] x No. of Space
 B= .020 [0.50] x No. of Space + .071 [1.80]
 C= .020 [0.50] x No. of Space + .039 [1.00]
 D= .020 [0.50] x No. of Space + .110 [2.80]

UNLESS OTHERWISE SPECIFIED ALL DIMENSIONS ARE INCHES [MM] TOLERANCES: EXCEPT AS NOTED		
INCHES		HOLES
.X ± .10	∅X ± .10	
.XX ± .020	∅XX ± .015	
.XXX ± .015	∅XXX ± .010	
APPROVALS		DATE
DRAWN	HR	11/4/16
CHECKED	MW	11/4/16
APPROVED		



TITLE .020 [0.50] PITCH BOARD TO BOARD PLUG CONNECTOR, SMT TYPE, W/ CAP		
SIZE X	PART NO. BB5-PL-XXX-G-X.XX-PP-T/R	REV. A
REF: S00070T	SCALE: NTS	SHEET 1 OF 1