

6

5

4

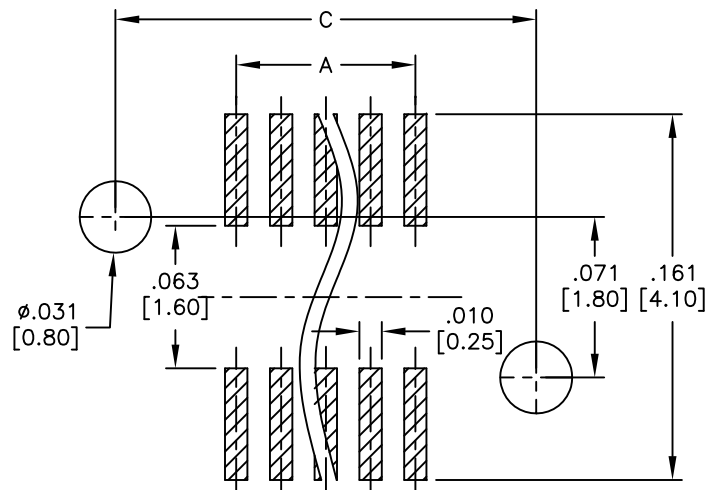
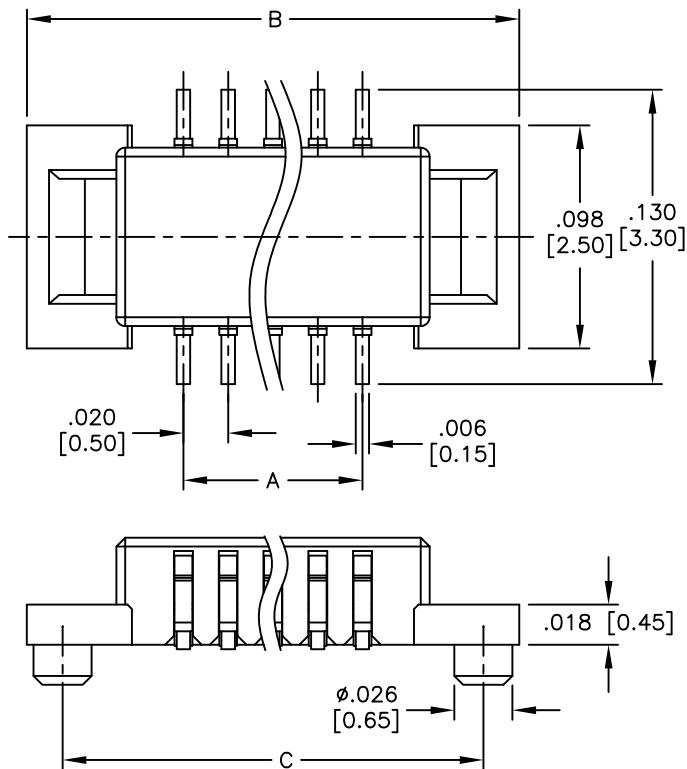
3

2

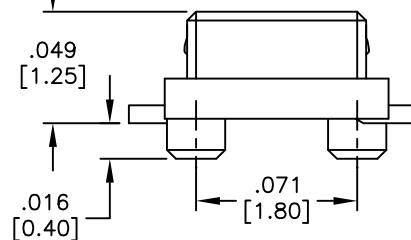
1

APPROVED: _____
DATE: _____ TITLE: _____

Rev	AWO #	Description	Date	Appr
-		RELEASED	12/07/10	



RECOMMENDED PCB LAYOUT



PACKAGED ON TAPE & REEL

SPECIFICATIONS:

Material:
 Insulator: Hi-temp thermoplastic, rated UL 94V-0
 Insulator color: Natural
 Contacts: Copper Alloy
 Hold down: Copper Alloy
 Plating:
 Gold flash over Nickel underplate overall.
 Electrical:
 Operating voltage: 50 VAC max
 Current rating: 0.5 Amps max
 Contact resistance: 40 mohms max. initial
 Insulation resistance: 500 Mohms min
 Environmental:
 Lead free, RoHS compliant
 Recommended soldering temp: 260°C for 5 seconds



Positions: 10 thru 60

A = .020 [0.50] x (No. of Contacts per row - 1)
 B = .020 [0.50] x (No. of Contacts per row - 1) + .138 [3.50]
 C = .020 [0.50] x (No. of Contacts per row - 1) + .106 [2.70]

UNLESS OTHERWISE SPECIFIED
 ALL DIMENSIONS ARE INCHES [MM]
 TOLERANCES: EXCEPT AS NOTED

INCHES	HOLES
.X ± .10	Ø.X ± .10
.XX ± .020	Ø.XX ± .015
.XXX ± .015	Ø.XXX ± .010



TITLE: .020 [0.50] BOARD TO BOARD PLUG, SMT TYPE
 1.25MM HEIGHT, STACKING HEIGHT=1.5MM

APPROVALS		DATE
DRAWN	DY	12/07/10
CHECKED		
APPROVED		

SIZE	PART NO.	REV.
X	BB5-PE-XX-G-1.25-T/R	-
REF: S00128T	SCALE: NTS	SHEET 1 OF 1

6

5

4

3

2

1