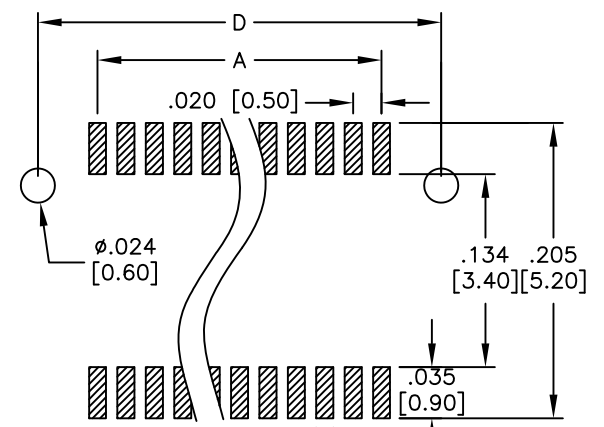
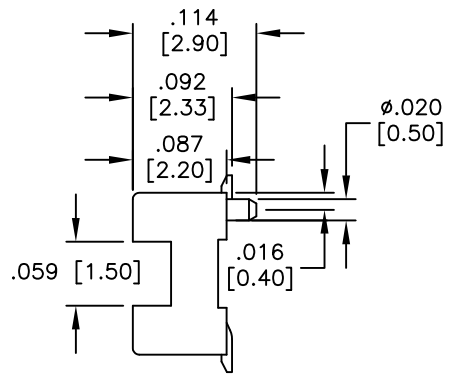
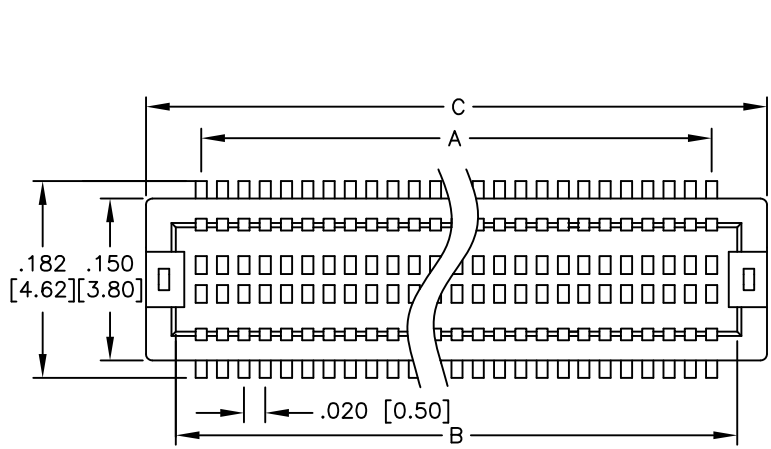
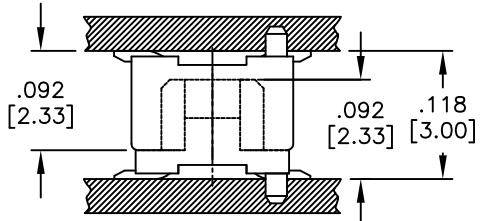
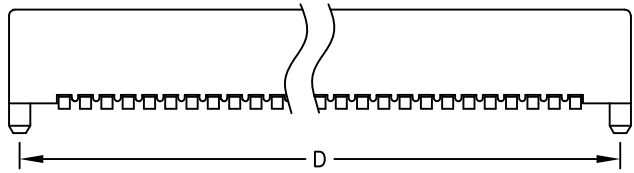


Rev	AWO #	Description	Date	Appr
-		RELEASED	5/25/09	

APPROVED: _____
DATE: _____ TITLE: _____



RECOMMENDED PCB LAYOUT



Mating Drawing (Ref)

SPECIFICATIONS:

Material:
Insulator: Nylon 46, rated UL 94V-0
Insulator color: White
Contacts: Phosphor Bronze
Plating:
Gold flash over Nickel underplate overall
Electrical:
Operating voltage: 50 VAC max.
Current rating: 0.5 Amps max.
Contact resistance: 30 mohms max. initial
Insulation resistance: 100 Mohms min@ 100V DC
Dielectric withstanding voltage: 100 VAC for 1 minute
Temperature Rating:
Operating temperature: -20°C to +105°C
Environmental:
Lead free, RoHS compliant
Recommended soldering temp: 260°C for 5 seconds



Positions: 10, 12, 14, 16, 20, 22, 26, 30, 32, 36, 40, 50, 60, 80

- A = .020 [0.50] x (No. of Contacts - 1)
- B = .020 [0.50] x (No. of Contacts - 1) + .047 [1.20]
- C = .020 [0.50] x (No. of Contacts - 1) + .102 [2.60]
- D = .020 [0.50] x (No. of Contacts - 1) + .083 [2.10]

UNLESS OTHERWISE SPECIFIED ALL DIMENSIONS ARE INCHES [MM] TOLERANCES: EXCEPT AS NOTED	
INCHES	HOLES
.X ± .10	∅X ± .10
.XX ± .020	∅XX ± .015
.XXX ± .015	∅XXX ± .010
APPROVALS	
DRAWN	DY
CHECKED	
APPROVED	
DATE	
5/25/09	

TITLE: .020 [0.50] BOARD TO BOARD PLUG
2.2 MM HEIGHT, SMT TYPE

SIZE	PART NO.	REV.
X	BB5-P3-XX-G	-

REF: S00056T SCALE: NTS SHEET 1 OF 1