

6

5

4

3

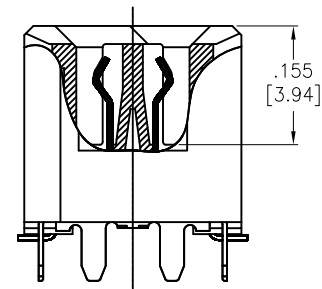
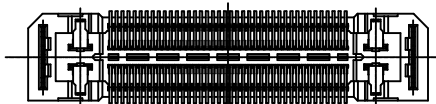
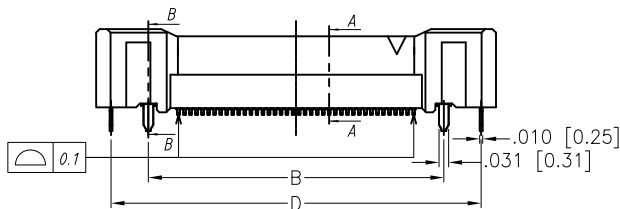
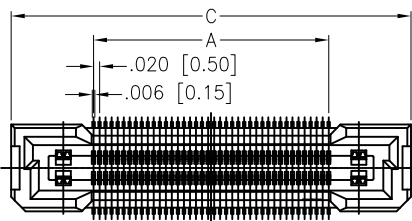
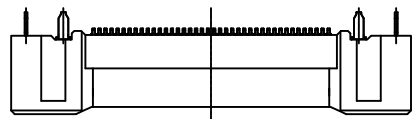
2

1

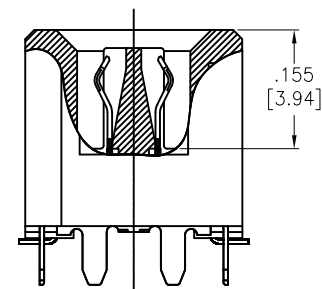
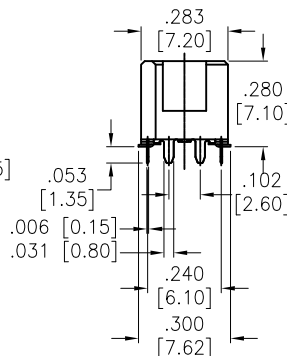
APPROVED: \_\_\_\_\_

DATE: \_\_\_\_\_ TITLE: \_\_\_\_\_

Rev	AWO #	Description	Date	Appr
-		RELEASED	10/8/24	



SECTION A-A



SECTION B-B

PACKAGED ON TAPE & REEL

Positions: 20, 30, 30, 40, 50, 60, 80, 100, 120

A= .020 [0.50] x No. of Space

B= .020 [0.50] x No. of Space + .197 [5.00]

C= .020 [0.50] x No. of Space + .538 [13.66]

D= .020 [0.50] x No. of Space + .441 [11.20]

E= .020 [0.50] x No. of Space + .648 [16.46]

SPECIFICATIONS:

Material:

Insulator: (LCP) Hi-Temp Thermoplastic, rated UL 94V-0

Insulator color: Black

Cap: (LCP) Hi-Temp Thermoplastic, rated UL 94V-0, Color: Black

Signal Contacts: Copper Alloy

Power Contacts: Copper Alloy

Hook: Copper Alloy, Tin Plated

Plating:

Gold over Nickel underplate on contact area,

Gold Flash over Nickel underplate overall

Environmental:

Lead free, RoHS compliant.



UNLESS OTHERWISE SPECIFIED ALL DIMENSIONS ARE INCHES [MM]. TOLERANCES: EXCEPT AS NOTED

INCHES		HOLES	
.X	± .10	ØX	±.10
.XX	± .020	ØXX	±.015
.XXX	± .015	ØXXX	±.010

DRAWN	LH	10/8/24
CHECKED	JL	10/8/24
APPROVED		

THIS DRAWING CONTAINS INFORMATION THAT IS PROPRIETARY AND SHOULD NOT BE USED WITHOUT PRIOR WRITTEN PERMISSION FROM ADAM TECH



TITLE  
.020 [0.50] PITCH BOARD TO BOARD SOCKET  
I/O SMT FLOATING CONNECTOR

SIZE X	PART NO. BB5-FSW-XXX-G-7.10-PP-T/R	REV. -
REF: -	SCALE: NTS	SHEET 1 OF 2

6

5

4

3

2

1

6

5

4

3

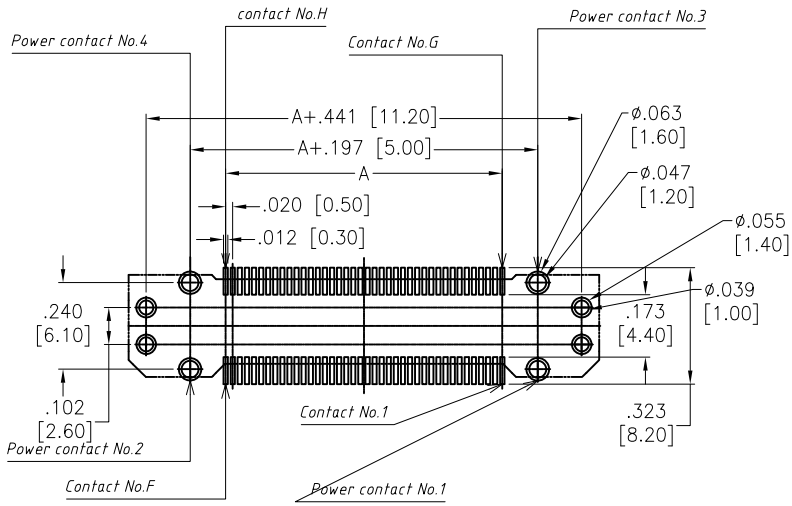
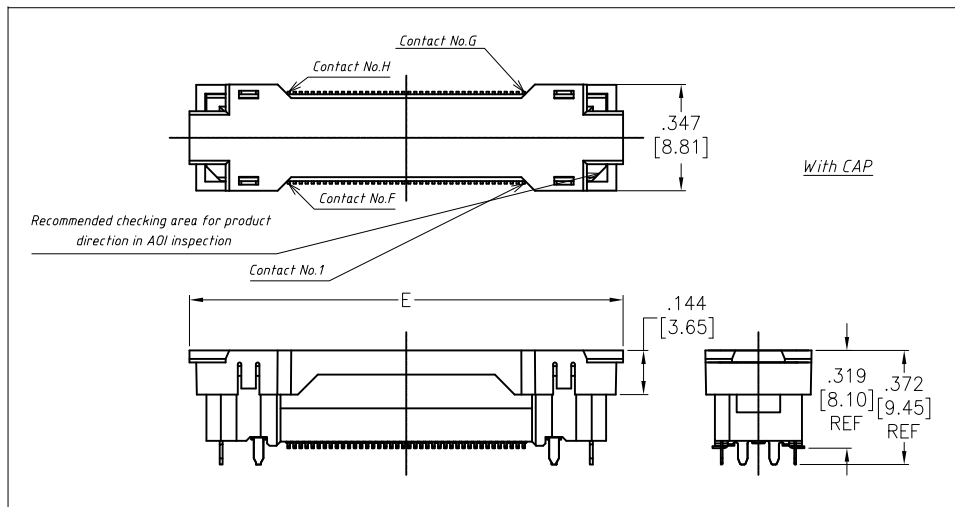
2

1

APPROVED: \_\_\_\_\_

DATE: \_\_\_\_\_ TITLE: \_\_\_\_\_

Rev	AWO #	Description	Date	Appr
SEE SHT 1 OF 2 FOR REVISION				



Recommended land pattern dimension of PCB  
(PCB thickness: T=1.6mm)

UNLESS OTHERWISE SPECIFIED ALL DIMENSIONS ARE INCHES [MM]. TOLERANCES: EXCEPT AS NOTED		
INCHES                      HOLES		
.X	± .10	∅X ±.10
.XX	± .020	∅XX ±.015
.XXX	± .015	∅XXX ±.010
DRAWN	LH	10/8/24
CHECKED	JL	10/8/24
APPROVED		
THIS DRAWING CONTAINS INFORMATION THAT IS PROPRIETARY AND SHOULD NOT BE USED WITHOUT PRIOR WRITTEN PERMISSION FROM ADAM TECH		

**ADAM TECH** 909 Rahway Avenue,  
Union, NJ 07083  
Phone: 908-687-5000  
Fax: 908-687-5710

TITLE	.020 [0.50] PITCH BOARD TO BOARD SOCKET I/O SMT FLOATING CONNECTOR	
SIZE	PART NO.	REV.
X	BB5-FSW-XXX-G-7.10-PP-T/R	-
REF:	-	SCALE: NTS SHEET 2 OF 2

6

5

4

3

2

1