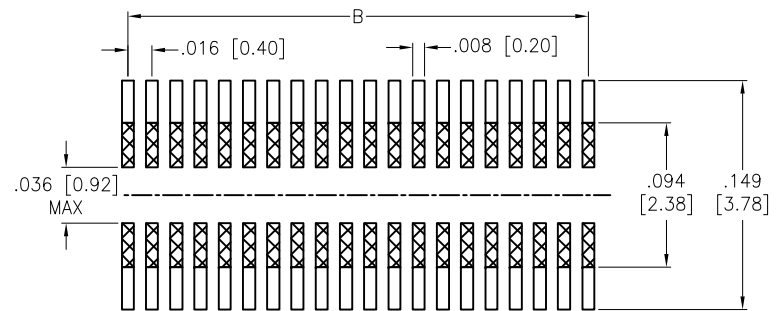
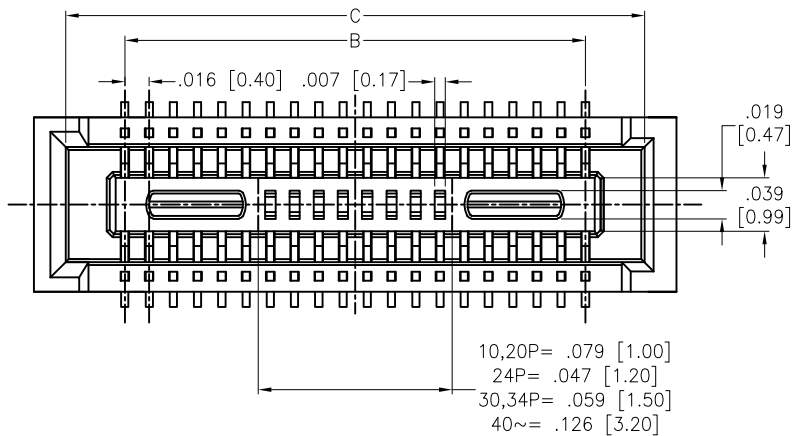
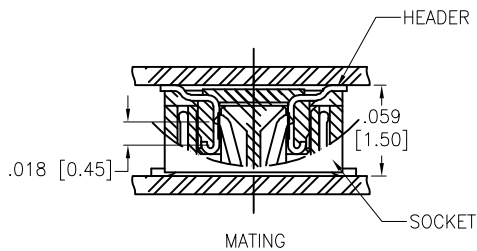
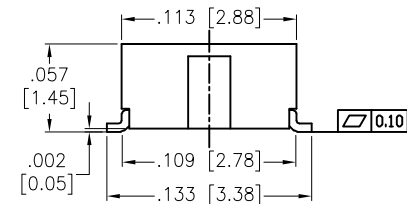
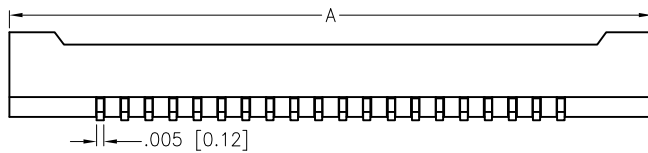


APPROVED: \_\_\_\_\_  
 DATE: \_\_\_\_\_ TITLE: \_\_\_\_\_

Rev	AWO #	Description	Date	Appr
-		RELEASED	11/22/22	



RECOMMENDED PCB LAYOUT



**SPECIFICATIONS:**

Material:  
 Insulator: Hi-Temp Thermoplastic, rated UL 94V-0  
 Insulator color: Black  
 Contacts: Phosphor Bronze  
 Plating:  
 Gold flash over Nickel underplate overall  
 Electrical:  
 Voltage rating: 30 VAC  
 Current rating: 0.3 A  
 Contact resistance: 90 mohms max  
 Insulation resistance: 50 Mohms min/ 100 VDC  
 Dielectric withstanding voltage: 100 VAC for one minute  
 Temperature Rating:  
 Operating temperature: -35°C to +85°C  
 Environmental:  
 Lead free, RoHS compliant



**PACKAGED ON TAPE & REEL**

Positions: 10, 20, 24, 30, 34, 40, 50, 60, 70, 80, 90, 100, 120  
 A = .016 [0.40] x No. of Positions per Row + .102 [2.60]  
 B = .016 [0.40] x No. of Space  
 C = .016 [0.40] x No. of Positions per Row + .065 [1.65]

UNLESS OTHERWISE SPECIFIED ALL DIMENSIONS ARE INCHES [MM]. TOLERANCES: EXCEPT AS NOTED		
INCHES		HOLES
.X ± .10		Ø.X ± .10
.XX ± .020		Ø.XX ± .015
.XXX ± .015		Ø.XXX ± .010



DRAWN	JJ	11/22/22
CHECKED	YC	11/22/22
APPROVED		

TITLE: .016 [0.40] BOARD TO BOARD SOCKET  
 GOLD PLATED, 1.45MM HEIGHT

THIS DRAWING CONTAINS INFORMATION THAT IS PROPRIETARY AND SHOULD NOT BE USED WITHOUT PRIOR WRITTEN PERMISSION FROM ADAM TECH

SIZE	PART NO.	REV.
X	BB4-SAT-XXX-G-1.45-NP-T/R	-
REF:	S00181C	SCALE: NTS SHEET 1 OF 1