

6

5

4

3

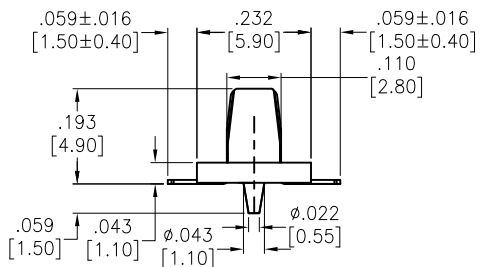
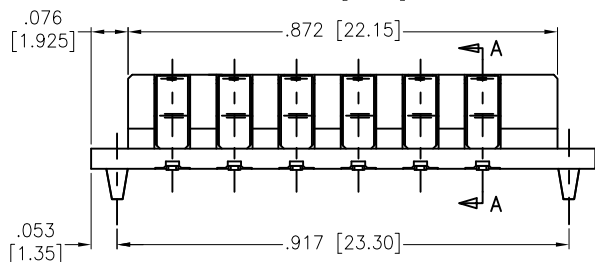
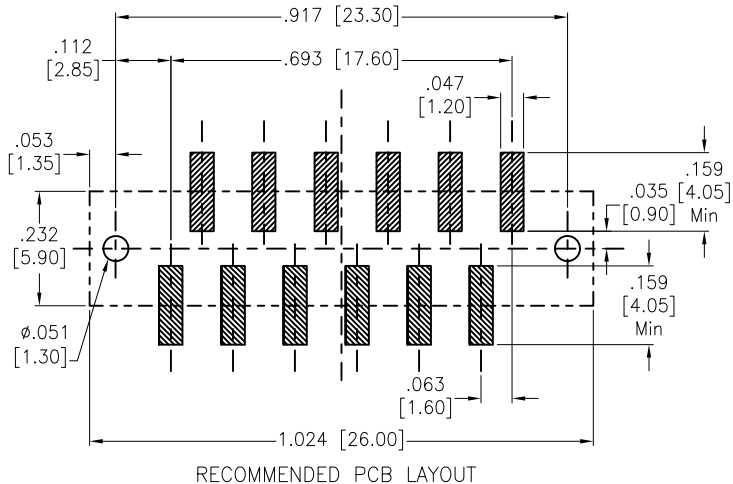
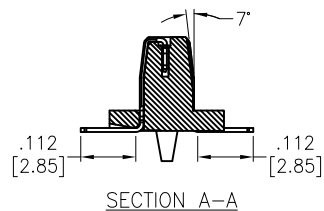
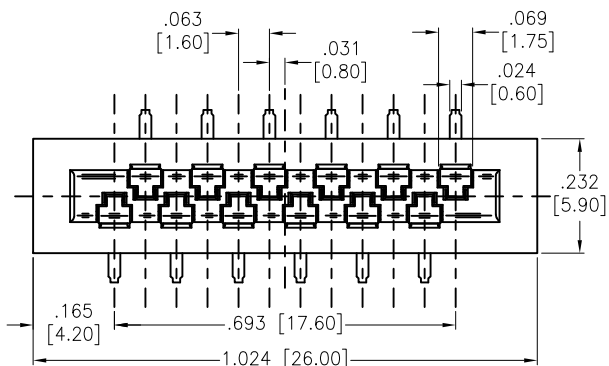
2

1

APPROVED: \_\_\_\_\_

DATE: \_\_\_\_\_ TITLE: \_\_\_\_\_

Rev	AWO #	Description	Date	Appr
-		TEMPORARILY FYI ONLY	03/06/13	



**SPECIFICATIONS:**

Material:  
 Insulator: Hi-Temp thermoplastic, rated UL 94V-0  
 Insulator color: Black  
 Contacts: Phosphor Bronze  
 Plating:  
 Gold over Nickel underplate in contact area,  
 Tin over Copper underplate on solder tails.  
 Electrical:  
 Operating voltage: 125V  
 Current rating: 1 Amps  
 Temperature Rating:  
 Operating temperature: -40°C to +105°C  
 Environmental:  
 Lead free, RoHS compliant



UNLESS OTHERWISE SPECIFIED  
 ALL DIMENSIONS ARE INCHES [MM]  
 TOLERANCES: EXCEPT AS NOTED

.X	± .10	Ø.X	± .10
.XX	± .020	Ø.XX	± .015
.XXX	± .015	Ø.XXX	± .010

APPROVALS		DATE
DRAWN	TW	03/06/13
CHECKED	YC	03/06/13
APPROVED		



TITLE  
 .063 [1.60] PITCH BOARD TO BOARD, 12PINS  
 PLUG CONNECTOR, SEL-GOLD PLATED

SIZE X	PART NO. BB16-P-12-SG	REV. -
REF: S00070T	SCALE: NTS	SHEET 1 OF 1

6

5

4

3

2

1