

6

5

4

3

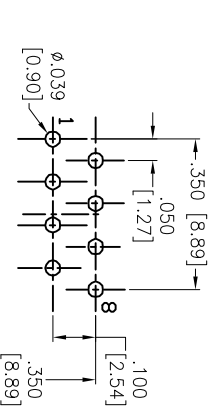
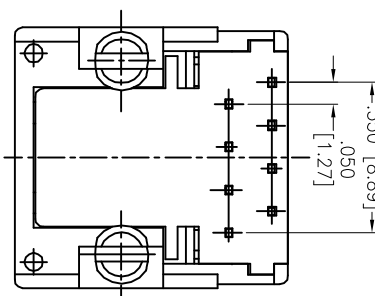
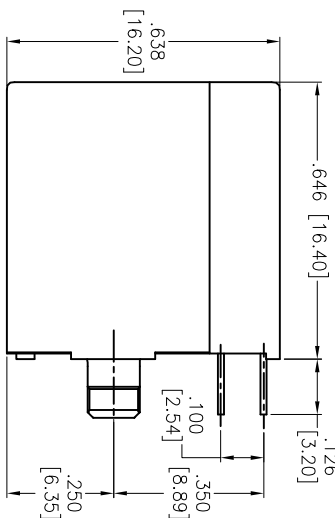
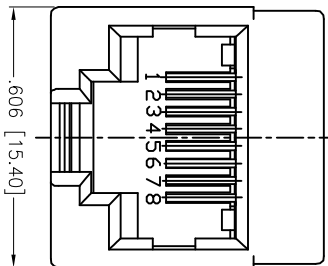
2

1

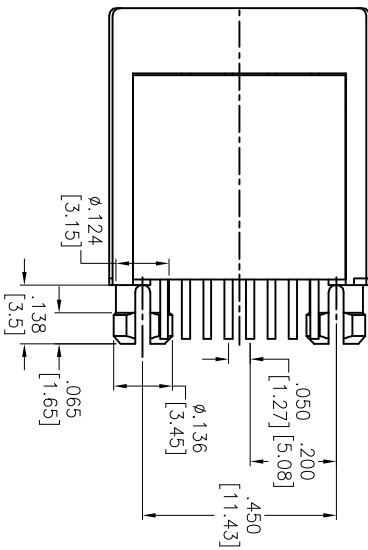
APPROVED: _____

DATE: _____ TITLE: _____

Rev	AWO #	Description	Date	Appr
-		RELEASED	10/4/04	
A		REDRAWN	01/05/12	
B		UPDATED SPECIFICATIONS	5/5/17	



RECOMMENDED PCB LAYOUT



PLATING	
X	Gold Flash
0	15 µin Gold
1	30 µin Gold
2	50 µin Gold

SPECIFICATIONS:

Material: PBI, rated UL 94V-0

Insulator color: Black

Contacts: Phosphor Bronze, .0137" [0.35mm] Thick Flat Plating:

Gold over Nickel underplate on contact area,
Tin over Copper underplate on PCB tails

Electrical:

Operating voltage: 125 VAC max

Current rating: 1.5 Amps max

Contact resistance: 20 mohms max

Insulation resistance: 1,000 Mohms min @ 500 VDC

Dielectric withstanding voltage: 1,000 VAC for 1 minute

Temperature Rating: Operating temperature: -40°C to +85°C

Environmental: Lead free, RoHS compliant.



TITLE: MODULAR TELEPHONE JACK, 8P8C
VERTICAL, 0.35MM FLAT PCB CONTACT

UNLESS OTHERWISE SPECIFIED ALL DIMENSIONS ARE INCHES [MM] TOLERANCES: EXCEPT AS NOTED			
.X	±.10	ØX	±.10
.XX	±.020	ØXXX	±.015
.XXX	±.015	ØXXXX	±.010
APPROVALS		DATE	
DRAWN	SS	10/4/04	
CHECKED			
APPROVED			

SIZE	PART NO.	REV.
X	MTJ-88FX1	B
REF:	S0003C	SCALE: NTS
SHEET 1 OF 1		

6

5

4

3

2

1

SPECIFICATIONS:

Material: PBI, rated UL 94V-0

Insulator color: Black

Contacts: Phosphor Bronze, .0137" [0.35mm] Thick Flat Plating:

Gold over Nickel underplate on contact area,
Tin over Copper underplate on PCB tails

Electrical:

Operating voltage: 125 VAC max

Current rating: 1.5 Amps max

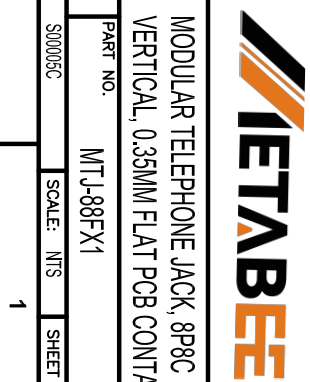
Contact resistance: 20 mohms max

Insulation resistance: 1,000 Mohms min @ 500 VDC

Dielectric withstanding voltage: 1,000 VAC for 1 minute

Temperature Rating: Operating temperature: -40°C to +85°C

Environmental: Lead free, RoHS compliant.



TITLE: MODULAR TELEPHONE JACK, 8P8C
VERTICAL, 0.35MM FLAT PCB CONTACT

UNLESS OTHERWISE SPECIFIED ALL DIMENSIONS ARE INCHES [MM] TOLERANCES: EXCEPT AS NOTED			
.X	±.10	ØX	±.10
.XX	±.020	ØXXX	±.015
.XXX	±.015	ØXXXX	±.010
APPROVALS		DATE	
DRAWN	SS	10/4/04	
CHECKED			
APPROVED			

SIZE	PART NO.	REV.
X	MTJ-88FX1	B
REF:	S0003C	SCALE: NTS
SHEET 1 OF 1		