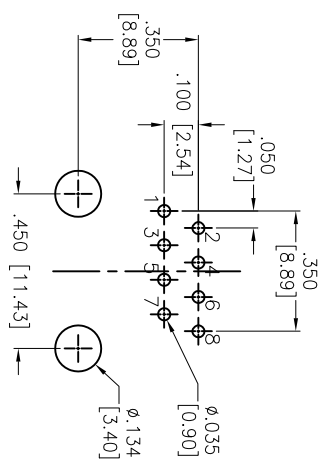
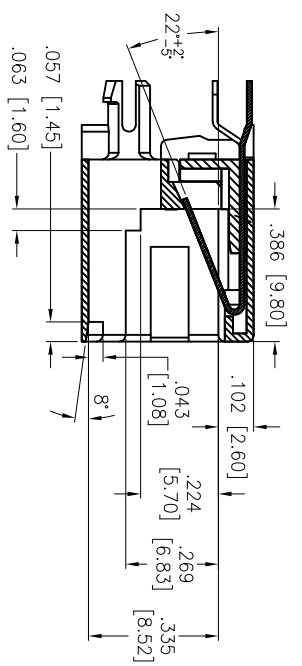
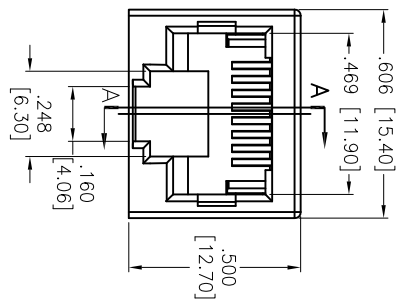


Rev	AWO #	Description	Date	Appr
-		RELEASED	6/25/15	

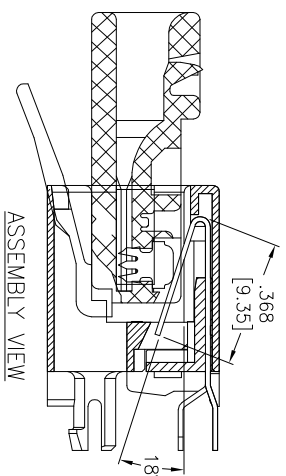
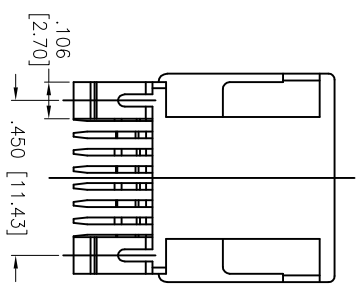
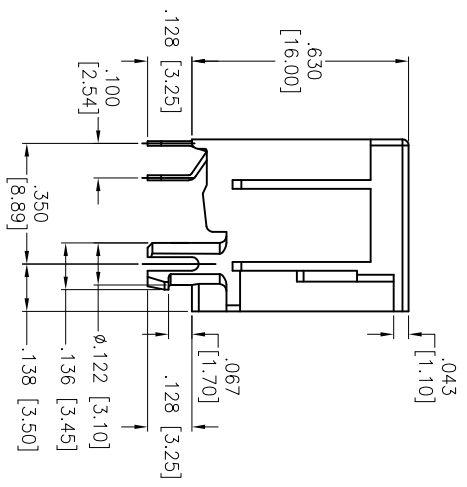
APPROVED: _____
 DATE: _____ TITLE: _____



RECOMMENDED PCB LAYOUT



SECTION A-A



ASSEMBLY VIEW

X	PLATING
0	15 µin Gold
1	30 µin Gold
2	50 µin Gold
6	6 µin Gold

SPECIFICATIONS:

Material:
 Insulator: PBT, glass reinforced, rated UL 94V-0
 Insulator color: Black
 Contacts: Phosphor Bronze
 Contact Plating:
 Flat contact
 Gold over Nickel underplate on contact area,
 Matte Tin over Nickel underplate on solder tails
 Round contact
 Gold over Nickel underplate overall
 (See chart for thickness)

Electrical:

Operating voltage: 125 VAC max
 Current rating: 1.5 Amps max
 Contact Resistance: 20 mohms max. initial
 Insulation resistance: 1,000 Mohms min @ 500 VDC
 Dielectric withstanding voltage: 1,000 VDC or AC Peak for 1 minute
 Temperature Rating:
 Operating temperature: -40°C to +85°C
 Environmental:
 Lead free, RoHS compliant.

A

B

C

D

A

B

C

D

ETA BEE

MODULAR TELEPHONE JACK, 8P8C
 TOP ENTRY, PCB TYPE

TITLE

UNLESS OTHERWISE SPECIFIED ALL DIMENSIONS ARE INCHES [MM]		TOLERANCES: EXCEPT AS NOTED	
INCHES		HOLDS	
.X	± .10	ØXX	± .10
.XX	± .020	ØXXX	± .015
.XXX	± .015	ØXXXX	± .010
APPROVALS		DATE	
DRAWN	HR	6/25/15	
CHECKED	AC	6/25/15	
APPROVED			



SIZE	PART NO.	REV.
X	MTJ-88AVX1	-
REF:	SCALE: NTS	SHEET 1 OF 1

6

5

4

3

2

1