

METABEE

D-sub Connectors





Metabee (Chengdu) Technology Co., Ltd.

180+
Countries

300+
Workers

20,000 M²
Production Workshop

16M
Group Assets

Metabee (Chengdu) Technology Co., Ltd. established in 2022 located in Sichuan Province with convenient transportation. Our associated factory Jiangmen Dosin specialize in producing RF connectors, M series connectors, and cables.

We are committed to being the world's leading Manufacturer of electronic connectors and industrial cables. We have developed more than 20 product series and more than 5,000 varieties. These products have been widely sold to many countries and regions around the world. They are mainly used for outdoor lighting automation machinery, new energy vehicles, charging equipment, electricity generation facilities, and other industries.

We can also support OEM ODM and customized related products. All products have owned American UL, German TUV, and Europe CE ROHS certifications and have several design patents. Our associated factory has production workshop with an area of 20,000 square meters, more than 300 employees, 30 international advanced production lines, and tens of precision testing equipment. Moreover, we have constructed a specialized laboratory for product research and development. Our reliable product quality, good service, and rapid technical have helped us win many customers in China and overseas markets.

Metabee (Chengdu) Technology Co., Ltd. has become the leading technology and scale Enterprise in the connector field. We have a reliable reputation among our customers because of our professional services, quality products, and competitive prices. We welcome customers from home and abroad to cooperate with us for Common success.



Metabee D-sub Connectors

1. Overview

At Metabee, we specialize in providing high-performance D-subminiature (D-sub) connectors engineered for reliability and precision. Designed with a robust structural criterion, our connectors combine a professional, aesthetic appearance with an intuitive design that ensures they are easy to install across various platforms.

Metabee's D-sub series is built to meet rigorous international standards, making them the preferred choice for professional-grade applications. Whether you are working on PCB assemblies, LED displays, or industrial machinery, our connectors provide stable and secure signal transmission. Our versatile product line includes:

- **High-Density D-sub:** For space-saving applications requiring more contacts in a smaller footprint.
- **Power & Coaxial D-sub:** Hybrid layouts designed to carry high-current power or RF signals.
- **IP-Rated Waterproof D-sub:** Engineered for harsh environments where moisture and dust protection are critical.
- **Specialty Layouts:** Including Dual Port (stacked), Filtered D-sub for EMI/RFI suppression, and custom pin configurations.

With Metabee, you get more than just a component; you get a durable interconnect solution supported by a full range of accessories and hardware to complete your system integration.

Specifications:

Rated Voltage	250V
Rated Current	3A
Contact Resistance	25mΩ-40mΩ
Insulation Resistance	5000 MΩ
Withstand Voltage	750V AC/RMS
Operating Temperature	-55°C to +85°C
Insertion & Extraction Force	30g-500g per pin
Gold Plating Thickness	1μ"/5μ"/10μ"/20μ"/30μ"

DB Series (2 rows solder type pin)



DB9 Male



DB9 Female



DB15P Male



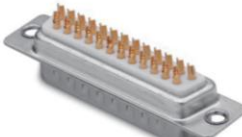
DB15P Female



DB15 Male



DB15 Female



DB25P Male



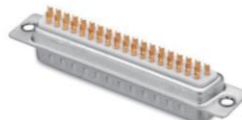
DB25P Female



DB25 Male



DB25 Female



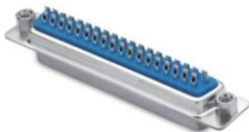
DB37P Male



DB37P Female



DB37 Male



DB37 Female



DB50P Male



DB50P Female

HDB Series (3 rows solder type pin)



HDB78 Male



HDB78 Female



HDB15 Male



HDB15 Female



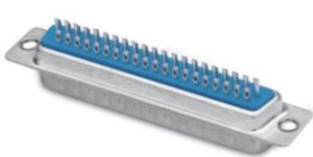
HDB26 Male



HDB26 Female



HDB44 Male



HDB62 Male

DR Series (2 rows R/A for PCB type)



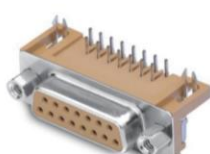
DR9 Male



DR9 Female



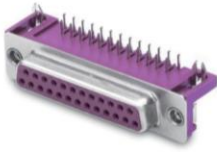
DR15 Male



DR15 Female



DR25 Male



DR25 Female



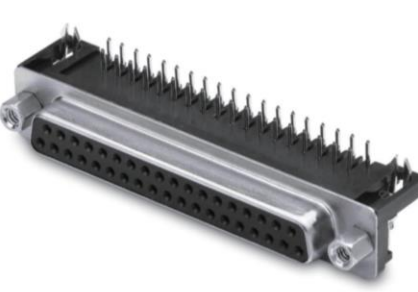
DR25 Male Blue



DR25 Female Blue



DR37 Male



DR37 Female

HDR Series (3 rows R/A for PCB type)



HDR26P Female three rows



HDR62P Female three rows



HDR62P Female four rows



HDR44P Male three rows



HDR44P Female three rows



HDR37P female three rows



HDR15P female three rows



HDR37P male three rows



HDR78P female three rows

DP Series (2 Rows Straight for PCB Type)



DP9P Male



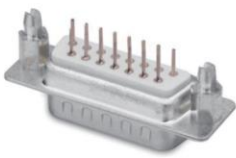
DP9P Female



DP9P female
with plastic hight



DP15F with
plastic hight



DP15P Male



DP15P Female



DP25P Male



DP25P Female



DP37P Male



DP37P Female



DP50P Male



DP50P Female

HDP Series (3 Rows Straight for PCB Type)



HDP15P Male



HDP15P Female



HDP26P Male



HDP26P Female



HDP44P Male



HDP44P Female



HDP62P Male



HDP62P Female



HDP78P Male



HDP78P Female



Three layers 25
female to 9 male



Double-deck
DR25 F to DR 24ML

VGA Series



HDR15P Male three rows



HDR15P Female three rows



Slim 15P female Matte-tin



HDR15P Female



Slim 15P Female Blue



Slim 15P Female



Solder Female VGA



HD Female VGA

DEC Series (2 Rows Pin)



DEC9 Male



DEC9 Female



DEC15 Male



DEC15 Female



DEC25 Male



DEC25 Female



DEC37 Male



DEC37 Female



DEC50 Male



DEC50 Female

HDEC Series (3 Rows Pin)



HDEC15 Female



HDEC15 Male



HDEC26 Male



HDEC26 Female



HDEC44 Male



HDEC44 Female



HDEC62 Female

Stacked D-sub Series



Double layer
DR9F to DR9M



Double layer
DR9F to HDR9M



Double layer
DR9M to DR9M



Double layer
DR9M to HDR15F



Double layer
DR15F to DR15F



Double layer
HDR15F to DVI24



Double layer DVI24



Double layer
DVI24+5



Double layer
DR37F to DR37F



Double layer
DR25F to DR25F



Double layer
HDR25F to HDR25F



Double layer
HDR15 to HDR15M

High Bracket Series



DR9公高架90度

DR9 Male high-bracket 90°



DR9公高架180度

DR9 Male high-bracket 180°



DR9母高架

DR9 Female high-bracket



DR9 Male high-bracket Black



DR9 Male high-bracket Green



DR9 Male high-bracket Green



DR15 Female high-bracket Blue



DR15 Female high-bracket Blue

D-sub Machine Pin Series



DB9 Male



DB9 Female



DR9P Male
Gold plated



DR9P Female
Gold plated



DR15P Male
Gold plated



DR15P Female
Gold plated



DR25P Male
Gold plated



DR37P Female
Gold plated



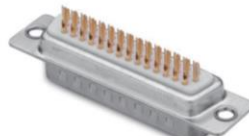
DR50P Male
Gold plated



HDB15 Male



HDB26 Female

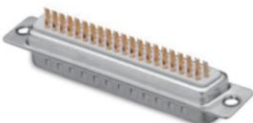


HDB44 Male

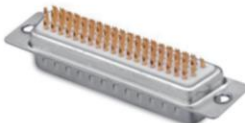
D-sub Machine Pin Series



HDB44 Female



HDB62 Male



HDB78 Male



HDB78 Female



HDR15P Male
Gold plated



HDR15P Female



HDR15P Male



HDR26P Female
Gold plated



HDR26P Male
Gold plated



HDR62P Male



HDR62P Female
Gold plated



SLM9 Male

Combo / Power D-sub Series



Power D SUB
2W2 Female



Power D SUB
2W2 Male



Power D SUB
3W3 Female



Power D SUB
3W3C Female



Power D SUB
5W5 Female



Power D SUB
7W2 Male



Power D SUB
9W4 Female R/A



Power D SUB
8W8 Male



Power D SUB
11W1 Male R/A



Power D SUB
13W3 Male



Power D SUB
21W4 Male



Power D SUB
25W3 Female

Combo / Power D-sub Series



IP68 9P 180° M
Bonding Wire



IP68 104 P 180° M
Bonding Wire



IP68 5W5 180° F PCB



IP68 15P 180° F
Bonding Wire



IP68 13W3 90° F
Bonding Wire



IP68 9W4 180° M
Bonding Wire



IP68 9P 180° M
Bonding Wire



IP68 17W2 180° F
Bonding Wire



IP68 25Pin 180° M
Bonding Wire



IP68 7W2 180° F
Bonding Wire



IP68 Coaxial 13W3 180°
M Bonding Wire



IP68 Power 8W8 180°
F Bonding Wire

Thanks for Watching!

Our team of passionate experts brings a wealth of experience to the table, ready to collaborate with you and unlock your full potential. By joining forces, we can create innovative solutions and achieve remarkable things.



CONTACT US

Phone: +86 159 2624 1606

E-mail: sales@metabeeai.com

Web: www.metabeeai.com & www.metabee.com

Address: Room 601, Building 3, Wanhe Center, Guanghua North 3rd Road, Qingyang District, Chengdu, China