

MIL-DTL-5015 Mil-Spec Connectors

Part Number :

MS3112E12-14P



Client Order no.:

Item no. :

Order no. :

Consignment no. :

Offer no. :

Project :

Remarks :

Basic Information

| | |
|-------------------------------|--|
| Product Type: | MIL-DTL-26482 series 1 Mil-Spec Circular Connector |
| Series: | MS3112 Box Mounting Receptacle |
| Connector Type: | Receptacle |
| Orientation: | Straight |
| Contact Type: | Pin Contacts |
| Number of Contacts: | 14 Contacts |
| Contact Termination: | Solder Cup |
| Shell sizes: | 12 |
| Contact Arrangement: | 12-14 |
| Coupling Method: | Bayonet |
| Mount Method: | Panel Mount |
| Mount Feature: | 4-Hole Flange |
| Wire Gauge: | 20/22/24AWG |
| Durability: | 500 Cycles |
| Alternate Position: | N - Normal |
| Shielding performance: | Unshielded |
| Temperature range: | -55°C to + 125°C |
| Protection degree: | IP67 |

Materials and Plating

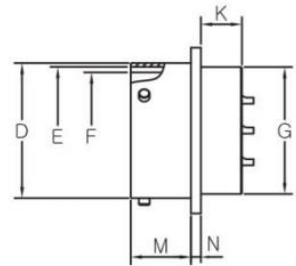
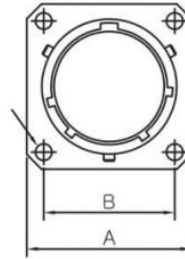
| | |
|-------------------------------------|--|
| Shell Material: | Aluminum Alloy |
| Shell Plating: | Olive Drab Cadmium/Black Over Zinc Plating |
| Contact Material: | Copper Alloy |
| Contact Plating: | Gold Plating |
| Insulator Material: | Synthetic Rubber |
| Grommets and Seals Material: | Synthetic Rubber |

Electrical Performance

| | |
|-------------------------------|-----------------------------------|
| Rated voltage: | 600V |
| Rated current: | 7.5A |
| Insulation Resistance: | 5,000 Mega Ohms minimum (at 25°C) |
| Contact resistance: | < 10 mΩ |

MS3112E Sizes

MS3112 Class E
 Box Mounting Receptacle



Dimensions in mm

| Shell Size | φA max | φB ± 0.13 | φC ± 0.13 | φD $+0.03 \sim -0.13$ | φE $+0.13 \sim -0.15$ | φF $+0.13 \sim -0.03$ | φG $+0.79 \sim -0.41$ | K max | M ± 0.79 | N ± 0.41 |
|------------|--------------------|---------------------------|---------------------------|-----------------------------------|-----------------------------------|-----------------------------------|-----------------------------------|----------|-----------------|-----------------|
| 8 | 21.03 | 15.09 | 3.05 | 12.01 | 10.46 | 9.19 | 11.12 | 8.99 | 10.95 | 1.57 |
| 10 | 24.23 | 18.26 | 3.05 | 14.99 | 13.72 | 12.45 | 14.27 | 8.99 | 10.95 | 1.57 |
| 12 | 26.59 | 20.62 | 3.05 | 19.05 | 17.50 | 15.42 | 17.48 | 8.99 | 10.95 | 1.57 |
| 14 | 28.98 | 23.01 | 3.05 | 22.22 | 20.68 | 18.59 | 20.62 | 8.99 | 10.95 | 1.57 |
| 16 | 31.34 | 24.61 | 3.05 | 25.40 | 23.85 | 21.77 | 23.83 | 8.99 | 10.95 | 1.57 |
| 18 | 33.73 | 26.97 | 3.05 | 28.58 | 26.39 | 24.43 | 26.97 | 8.99 | 10.95 | 1.57 |
| 20 | 36.91 | 29.36 | 3.05 | 31.75 | 29.57 | 27.61 | 30.18 | 10.59 | 14.12 | 2.39 |
| 22 | 40.08 | 31.75 | 3.05 | 34.92 | 32.74 | 30.78 | 33.32 | 10.59 | 14.12 | 2.39 |
| 24 | 43.26 | 34.93 | 3.73 | 38.10 | 35.92 | 33.96 | 36.53 | 11.30 | 14.96 | 2.39 |

How to Order

| | MS | 3112 | E | 12- | 10 | P | W | ** |
|----------------------|--|-------------|----------|------------|-----------|----------|----------|-----------|
| Series: | MS | | | | | | | |
| Shell Style: | 3110 – Wall Mounting Receptacle 3111 – Cable Connecting Plug 3112 – Box Mounting Receptacle 3114 – Jam Nut Mounting Receptacle 3115 – Dummy Receptacle 3116 – Straight Plug 3119 – Thru-Bulkhead Receptacle | | | | | | | |
| Class: | A – General duty, threaded back shell; E – Grommet seal expert on MS3112; F – Grommet seal with strain relief; J – Cable seal with clamp (MS3116 only) P – Potting seal | | | | | | | |
| Shell Size: | 8, 10, 12, 14, 16, 18, 20, 22, 24 | | | | | | | |
| Contact Arrangement: | See Catalog. | | | | | | | |
| Contact Type: | P – Pin Contact S – Socket Contact C – Feedthrough Contact | | | | | | | |
| Position: | See Catalog. | | | | | | | |
| Finish: | No Code – Olive drab cadmium plate finish as standard; F – Electroless Nickel Z3 – Black over Zinc plating (RoHS) A4 – Black over Anodize N – Nickel plating | | | | | | | |

Learn more about this connector on [Metabee's MIL-DTL-26482 connector catalog](#).