

Materials and Plating

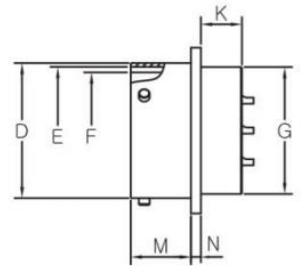
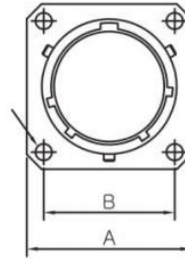
Shell Material:	Aluminum Alloy
Shell Plating:	Olive Drab Cadmium
Contact Material:	Copper Alloy
Contact Plating:	Silver Plating
Insulator Material:	Synthetic Rubber
Grommets and Seals Material:	Synthetic Rubber

Electrical Performance

Rated voltage:	600V
Rated current:	7.5A
Insulation Resistance:	5,000 Mega Ohms minimum (at 25°C)
Contact resistance:	< 10 mΩ

MS3112E Sizes

MS3112 Class E
 Box Mounting Receptacle



Dimensions in mm

Shell Size	φA max	φB ± 0.13	φC ± 0.13	φD $+0.03 \sim -0.13$	φE $+0.13 \sim -0.15$	φF $+0.13 \sim -0.03$	φG $+0.79 \sim -0.41$	K max	M ± 0.79	N ± 0.41
8	21.03	15.09	3.05	12.01	10.46	9.19	11.12	8.99	10.95	1.57
10	24.23	18.26	3.05	14.99	13.72	12.45	14.27	8.99	10.95	1.57
12	26.59	20.62	3.05	19.05	17.50	15.42	17.48	8.99	10.95	1.57
14	28.98	23.01	3.05	22.22	20.68	18.59	20.62	8.99	10.95	1.57
16	31.34	24.61	3.05	25.40	23.85	21.77	23.83	8.99	10.95	1.57
18	33.73	26.97	3.05	28.58	26.39	24.43	26.97	8.99	10.95	1.57
20	36.91	29.36	3.05	31.75	29.57	27.61	30.18	10.59	14.12	2.39
22	40.08	31.75	3.05	34.92	32.74	30.78	33.32	10.59	14.12	2.39
24	43.26	34.93	3.73	38.10	35.92	33.96	36.53	11.30	14.96	2.39

How to Order

		MS	3112	E	12-	10	P	W	**
Series:	MS								
Shell Style:	<p>3110 – Wall Mounting Receptacle</p> <p>3111 – Cable Connecting Plug</p> <p>3112 – Box Mounting Receptacle</p> <p>3114 – Jam Nut Mounting Receptacle</p> <p>3115 – Dummy Receptacle</p> <p>3116 – Straight Plug</p> <p>3119 – Thru-Bulkhead Receptacle</p>								
Class:	<p>A – General duty, threaded back shell;</p> <p>E – Grommet seal expert on MS3112;</p> <p>F – Grommet seal with strain relief;</p> <p>J – Cable seal with clamp (MS3116 only)</p> <p>P – Potting seal</p>								
Shell Size:	8, 10, 12, 14, 16, 18, 20, 22, 24								
Contact Arrangement:	See Catalog.								
Contact Type:	<p>P – Pin Contact</p> <p>S – Socket Contact</p> <p>C – Feedthrough Contact</p>								
Position:	See Catalog.								
Finish:	<p>No Code – Olive drab cadmium plate finish as standard;</p> <p>F – Electroless Nickel</p> <p>Z3 – Black over Zinc plating (RoHS)</p> <p>A4 – Black over Anodize</p> <p>N – Nickel plating</p>								

Learn more about this connector on [Metabee's MIL-DTL-26482 connector catalog](#).