

# **J30J Series (or MIL-DTL-83513 / MDM) Micro-D Subminiature Connector**

# J30J Series (or MIL-DTL-83513 / MDM) Micro-D Subminiature Connector

## 1. Features

1. J30J connectors are compatible with USA MDM / MIL-DTL-83513 connectors;
2. J30J Connectors can be divided into 11 types according to the number of pins: 9pin, 15pin, 21pin, 25pin, 31pin, 37pin, 51pin, 66pin, 74pin, 100pin, 144pin;
3. The section area of suitable cable is 0.1-0.15 mm<sup>2</sup>;
4. These connectors meet the requirements of GJB2446 (equivalent to MIL-DTL-83513);
5. The performance standard: Q/Ln.J6-69-92 J30 Series Miniature Rectangular Electronic Connector Technical Condition;

## 2. Main Specifications

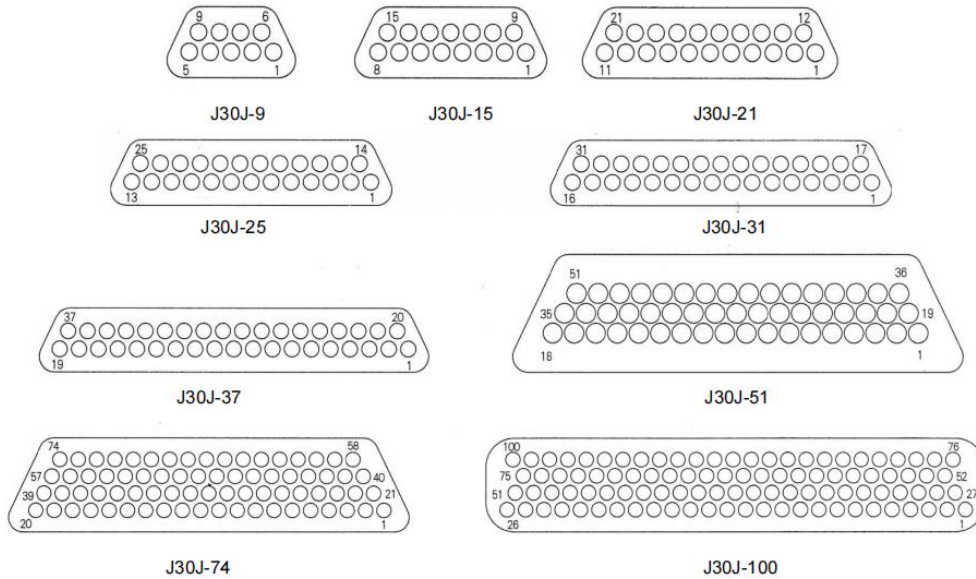
|                               |  |
|-------------------------------|--|
| <b>Operating Temperature:</b> | -55°C to +125°C  |
| <b>Rated Current:</b>         | 3A   |
| <b>Humidity:</b>              | 98% at +40°C   |
| <b>Insulation resistance:</b> | ≥ 5000MΩ   |
| <b>Contact resistance:</b>    | ≤ 10mΩ   |
| <b>Durability:</b>            | 500 times  |
| <b>Dielectric Strength:</b>   | 800 V  |
| <b>Vibration:</b>             | 10Hz ~ 2000Hz 196 m/s <sup>2</sup>   |
| <b>Random Vibration:</b>      | Power density 0.4G <sup>2</sup> /Hz. The total acceleration-root-mean square is 23.1G. |
| <b>Shock</b>                  | 735 m/s <sup>2</sup> , 11ms  |
| <b>Acceleration</b>           | 735 m/s <sup>2</sup>   |
| <b>Low air pressure</b>       | 4.5 kPa 200V   |

### 3. How to Order

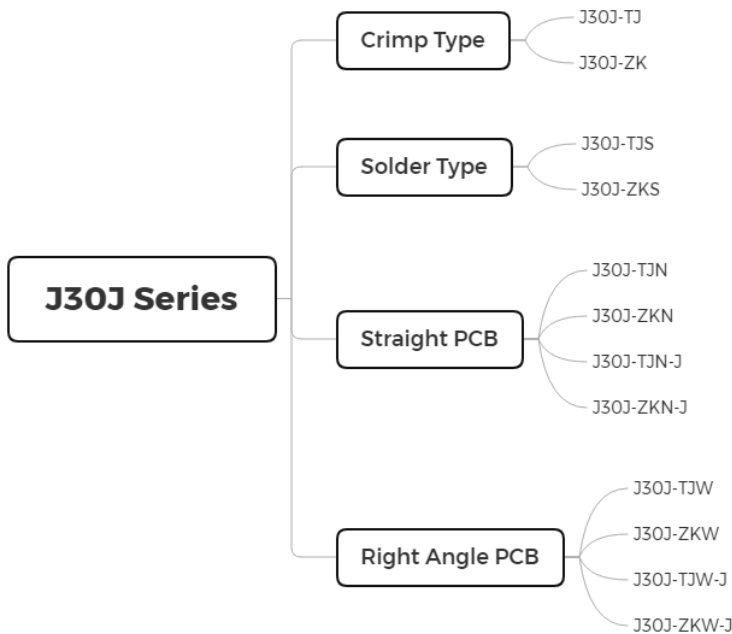
|  | J30J | 9 | TJ | S | - | G | A |
|--|------|---|----|---|---|---|---|
| <b>Series Prefix</b>                           |      |   |    |   |   |   |   |
| <b>Number of Contacts:</b>                     |      |   |    |   |   |   |   |
| 9, 15, 21, 25, 31, 37, 51, 66, 74, 100, 144    |      |   |    |   |   |   |   |
| <b>Type of Connectors and Contacts:</b>        |      |   |    |   |   |   |   |
| TJ - Pin in the plug                           |      |   |    |   |   |   |   |
| TZ - Socket in the receptacle                  |      |   |    |   |   |   |   |
| <b>Type of Termination:</b>                    |      |   |    |   |   |   |   |
| Omit - Crimp                                   |      |   |    |   |   |   |   |
| S - Solder                                     |      |   |    |   |   |   |   |
| N - Straight PCB                               |      |   |    |   |   |   |   |
| W - 90-degree elbow PCB                        |      |   |    |   |   |   |   |
| <b>Type of Locking Accessory</b>               |      |   |    |   |   |   |   |
| <b>Finish:</b>                                 |      |   |    |   |   |   |   |
| Omit - Nickel Plating                          |      |   |    |   |   |   |   |
| G - Cadmium Plating                            |      |   |    |   |   |   |   |
| <b>Modification:</b>                           |      |   |    |   |   |   |   |
| A - Backshell with shielding cable clamp       |      |   |    |   |   |   |   |
| D - Flange connecting position with avoid-turn |      |   |    |   |   |   |   |
| J - Grid distance of PCB is 1.27x2.54          |      |   |    |   |   |   |   |
| Q - Flange of shell broadening                 |      |   |    |   |   |   |   |

Example part number: J30J-9TJS-GA

## 4. J30J Micro-D Connector Pinout

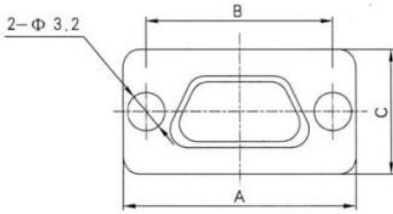
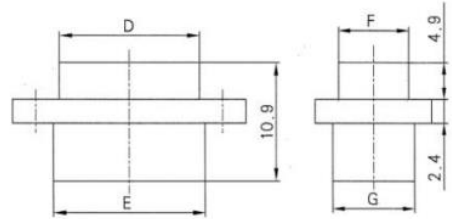
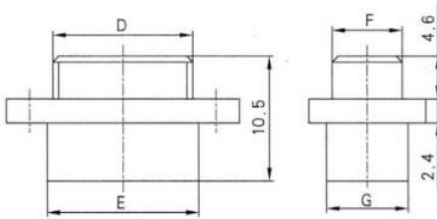


## 5. J30J Connector Family Tree

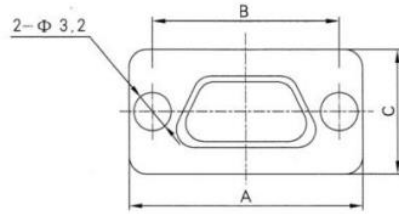


## 6. Shell Sizes

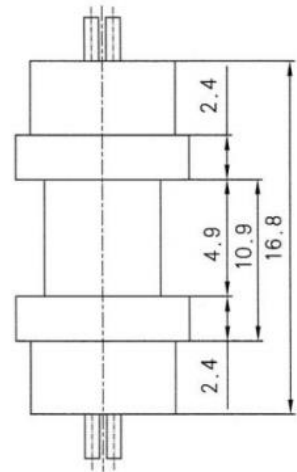
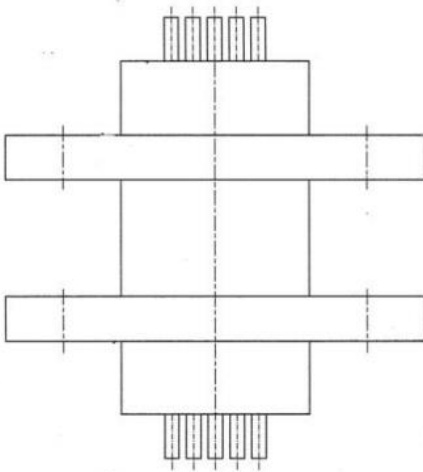
### (1) Crimp Type



plug with pin



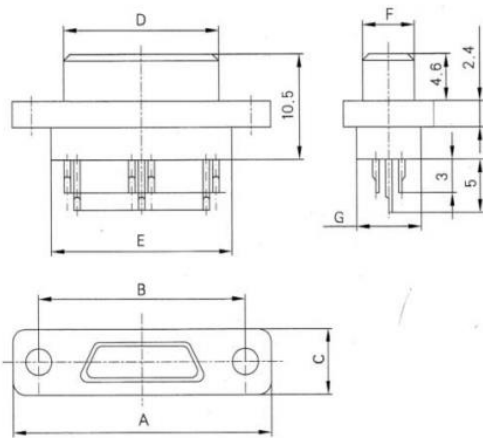
receptacle with socket



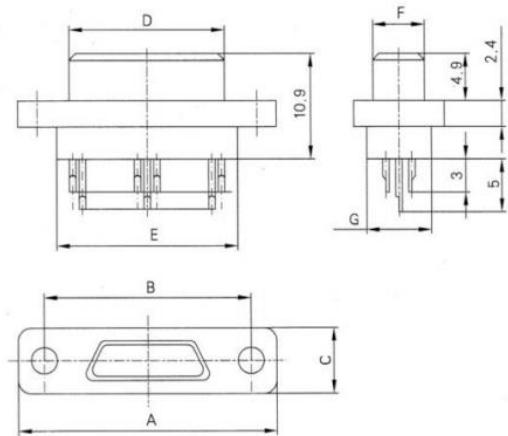
Size after mating

| Part number | A    | B     | C   | D    | E    | F   | G   |
|-------------|------|-------|-----|------|------|-----|-----|
| J30J-9TJ    | 19.6 | 14.3  | 7.6 | 8.3  | 9.9  | 4.7 | 6.8 |
| J30J-15TJ   | 23.5 | 18.2  | 7.6 | 12.3 | 13.8 | 4.7 | 6.8 |
| J30J-21TJ   | 27.4 | 22.0  | 7.6 | 16.0 | 17.6 | 4.7 | 6.8 |
| J30J-25TJ   | 29.8 | 24.5  | 7.6 | 18.6 | 20.2 | 4.7 | 6.8 |
| J30J-31TJ   | 33.6 | 28.3  | 7.6 | 22.4 | 24.0 | 4.7 | 6.8 |
| J30J-37TJ   | 37.4 | 32.2  | 7.6 | 26.3 | 27.8 | 4.7 | 6.8 |
| J30J-51TJ   | 36.4 | 30.86 | 8.7 | 25.0 | 26.6 | 5.8 | 7.9 |
| J30J-66TJ   | 42.9 | 37.3  | 8.7 | 31.4 | 33.0 | 5.8 | 7.9 |
| J30J-74TJ   | 38.8 | 33.5  | 9.7 | 27.5 | 29.1 | 6.8 | 9.1 |
| J30J-100TJ  | 54.7 | 45.7  | 9.7 | 35.0 | 36.6 | 6.8 | 9.1 |
| J30J-9ZK    | 19.6 | 14.3  | 7.6 | 9.8  | 9.9  | 6.1 | 6.8 |
| J30J-15ZK   | 23.5 | 18.2  | 7.6 | 13.7 | 13.8 | 6.1 | 6.8 |
| J30J-21ZK   | 27.4 | 22.0  | 7.6 | 17.4 | 17.6 | 6.1 | 6.8 |
| J30J-25ZK   | 29.8 | 24.5  | 7.6 | 20   | 20.2 | 6.1 | 6.8 |
| J30J-31ZK   | 33.6 | 28.3  | 7.6 | 23.8 | 24.0 | 6.1 | 6.8 |
| J30J-37ZK   | 37.4 | 32.2  | 7.6 | 27.7 | 27.8 | 6.1 | 6.8 |
| J30J-51ZK   | 36.4 | 30.86 | 8.7 | 26.5 | 26.6 | 7.2 | 7.9 |
| J30J-66ZK   | 42.9 | 37.3  | 8.7 | 32.9 | 33.0 | 7.2 | 7.9 |
| J30J-74ZK   | 38.8 | 33.5  | 9.7 | 29.0 | 29.1 | 8.3 | 9.1 |
| J30J-100ZK  | 54.7 | 45.7  | 9.7 | 36.6 | 36.6 | 8.2 | 9.1 |

## (2) Solder Type

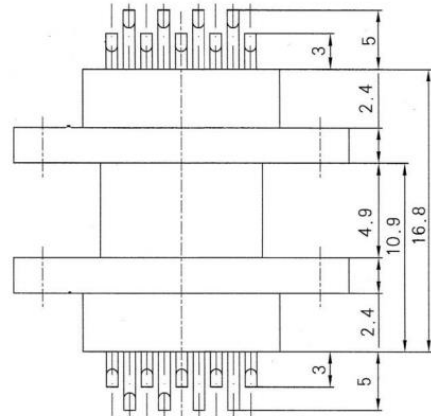
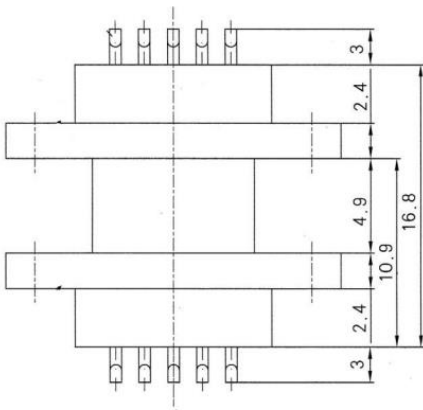


plug with pin

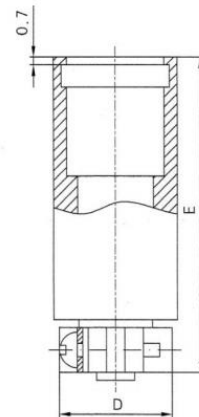
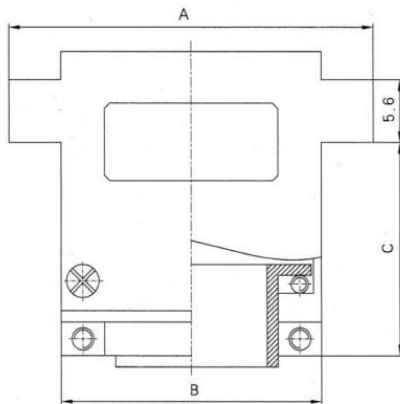


receptacle with socket

| Part number     | A    | B    | C   | D          |            | E    | F   |     | G   |
|-----------------|------|------|-----|------------|------------|------|-----|-----|-----|
| J30J-9TJS/ZKS   | 19.6 | 14.3 | 7.6 | 8.3 (TJS)  | 9.8 (ZKS)  | 9.9  | 4.7 | 6.1 | 6.8 |
| J30J-15TJS/ZKS  | 23.5 | 18.2 | 7.6 | 12.3 (TJS) | 13.7 (ZKS) | 13.8 | 4.7 | 6.1 | 6.8 |
| J30J-21TJS/ZKS  | 27.4 | 22.0 | 7.6 | 16.0 (TJS) | 17.4 (ZKS) | 17.6 | 4.7 | 6.1 | 6.8 |
| J30J-25TJS/ZKS  | 29.8 | 24.5 | 7.6 | 18.6 (TJS) | 20.0 (ZKS) | 20.2 | 4.7 | 6.1 | 6.8 |
| J30J-31TJS/ZKS  | 33.6 | 28.3 | 7.6 | 22.4 (TJS) | 23.8 (ZKS) | 24.0 | 4.7 | 6.1 | 6.8 |
| J30J-37TJS/ZKS  | 37.4 | 32.2 | 7.6 | 26.3 (TJS) | 27.7 (ZKS) | 27.8 | 4.7 | 6.1 | 6.8 |
| J30J-51TJS/ZKS  | 36.4 | 30.8 | 8.7 | 25.0 (TJS) | 26.5 (ZKS) | 26.6 | 5.8 | 7.2 | 7.9 |
| J30J-66TJS/ZKS  | 42.9 | 37.3 | 8.7 | 31.4 (TJS) | 32.9 (ZKS) | 33.0 | 5.8 | 7.2 | 7.9 |
| J30J-74TJS/ZKS  | 38.8 | 33.5 | 9.7 | 27.5 (TJS) | 29.0 (ZKS) | 29.1 | 6.8 | 8.3 | 9.1 |
| J30J-100TJS/ZKS | 54.7 | 45.7 | 9.7 | 35.0 (TJS) | 36.6 (ZKS) | 36.6 | 6.8 | 8.3 | 9.1 |



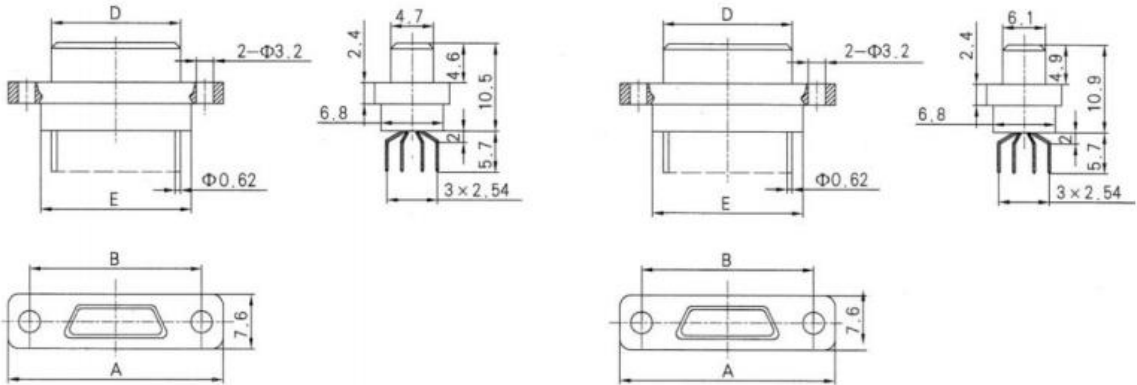
Size after mating



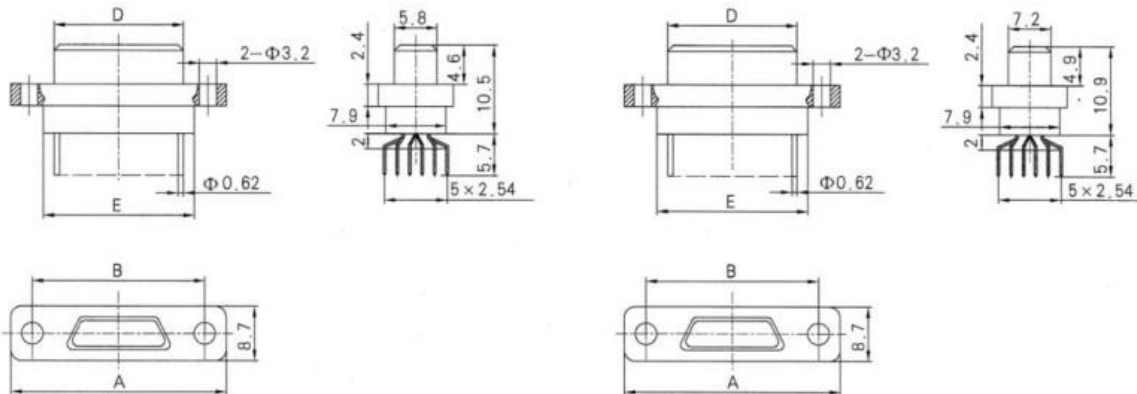
Size of A3 clamp

| Type (Cores) | A    | B    | C    | D    | E  | Type (Cores) | A    | B    | C    | D    | E  |
|--------------|------|------|------|------|----|--------------|------|------|------|------|----|
| 9            | 19.6 | 9.9  | 18.2 | 10.4 | 27 | 37           | 37.4 | 27.8 | 19.2 | 10.4 | 28 |
| 15           | 23.5 | 13.8 | 18.2 | 10.4 | 27 | 51           | 36.4 | 26.6 | 21.2 | 11.2 | 30 |
| 21           | 27.4 | 17.6 | 19.2 | 10.4 | 28 | 66           | 42.9 | 33.0 | 21.2 | 11.2 | 30 |
| 25           | 29.8 | 20.2 | 19.2 | 10.4 | 28 | 74           | 38.8 | 29.1 | 21.2 | 12.0 | 30 |
| 31           | 33.6 | 24.0 | 19.2 | 10.4 | 28 | 100          | 54.7 | 40.7 | 21.2 | 12.0 | 30 |

### (3) Straight PCB



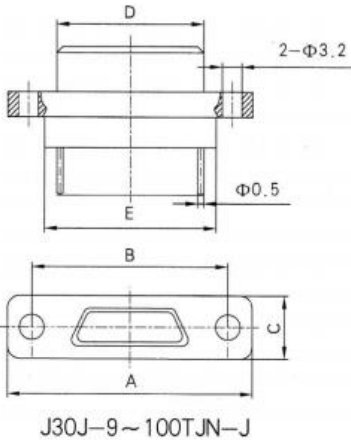
Grid Distance: 2.54\*2.54 cores: 9, 15, 21, 25, 31, 37



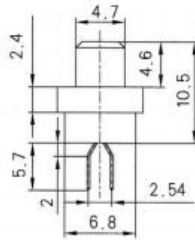
Grid Distance: 2.54\*2.54 cores: 51, 66



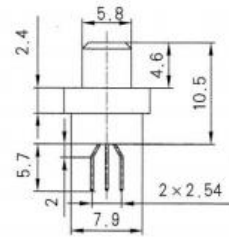
| Part number    | A    | B    | C   | D          |            | E    |
|----------------|------|------|-----|------------|------------|------|
|                |      |      |     | 8.3 (TJN)  | 9.8 (ZKN)  |      |
| J30J-9TJN/ZKN  | 19.6 | 14.3 | 7.6 | 8.3 (TJN)  | 9.8 (ZKN)  | 9.9  |
| J30J-15TJN/ZKN | 23.5 | 18.2 | 7.6 | 12.3 (TJN) | 13.7 (ZKN) | 13.8 |
| J30J-21TJN/ZKN | 27.4 | 22.0 | 7.6 | 16.0 (TJN) | 17.4 (ZKN) | 17.6 |
| J30J-25TJN/ZKN | 29.8 | 24.5 | 7.6 | 18.6 (TJN) | 20.0 (ZKN) | 20.2 |
| J30J-31TJN/ZKN | 33.6 | 28.3 | 7.6 | 22.4 (TJN) | 23.8 (ZKN) | 24.0 |
| J30J-37TJN/ZKN | 37.4 | 32.2 | 7.6 | 26.3 (TJN) | 27.7 (ZKN) | 27.8 |
| J30J-51TJN/ZKN | 36.4 | 30.8 | 8.7 | 25.0 (TJN) | 26.5 (ZKN) | 26.6 |
| J30J-66TJN/ZKN | 42.9 | 37.3 | 8.7 | 31.4 (TJN) | 32.9 (ZKN) | 33.0 |



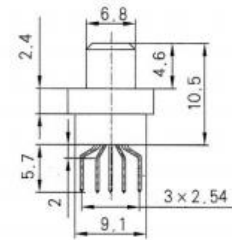
J30J-9~100TJN-J



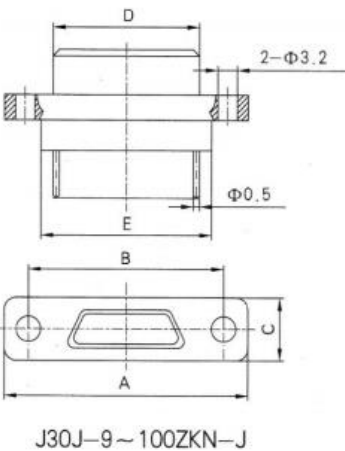
J30J-9~37TJN-J



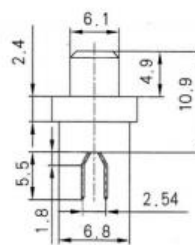
J30J-55,66TJN-J



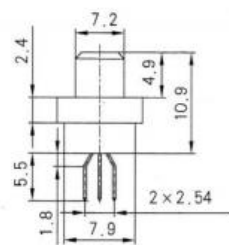
J30J-74,100TJN-J



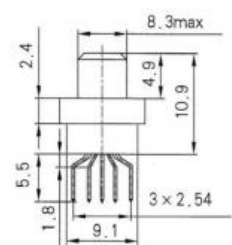
J30J-9~100ZKN-J



J30J-9~37ZKN-J



J30J-51,66ZKN-J

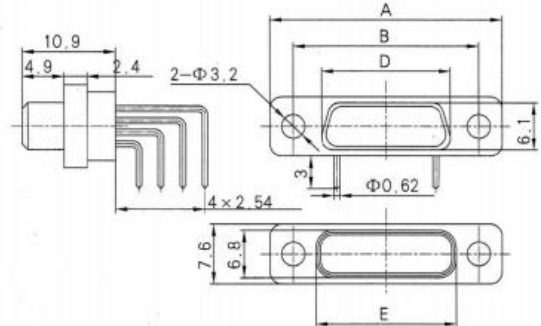
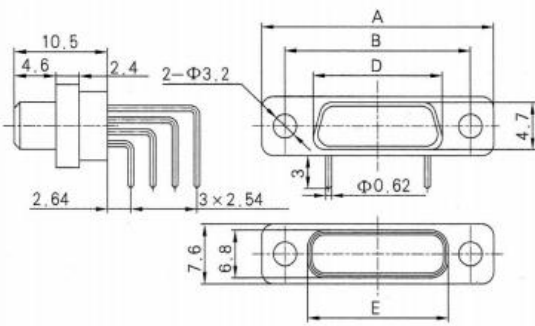


J30J-74,100ZKN-J

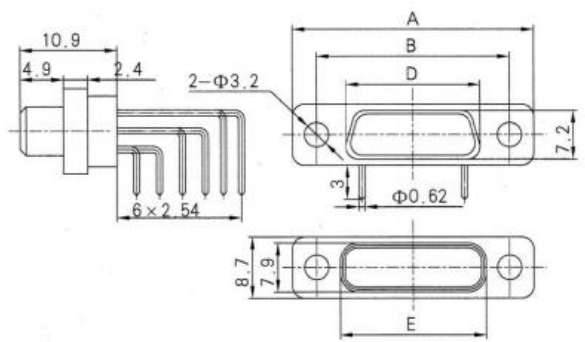
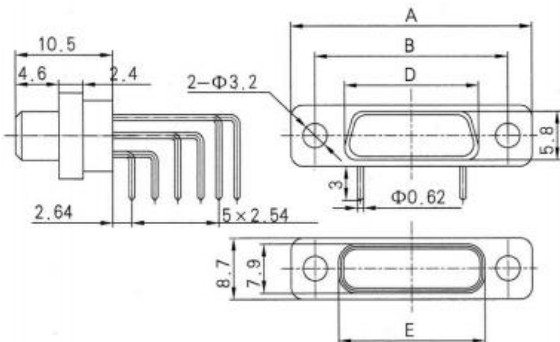
Grid Distance: 1.27\*2.54

| Part number           | A    | B    | C   | D              |                | E    |
|-----------------------|------|------|-----|----------------|----------------|------|
| J30J – 9TJN/ZKN – J   | 19.6 | 14.3 | 7.6 | 8.3 (TJN – J)  | 9.8 (ZKN – J)  | 9.9  |
| J30J – 15TJN/ZKN – J  | 23.5 | 18.2 | 7.6 | 12.3 (TJN – J) | 13.7 (ZKN – J) | 13.8 |
| J30J – 21TJN/ZKN – J  | 27.4 | 22.0 | 7.6 | 16.0 (TJN – J) | 17.4 (ZKN – J) | 17.6 |
| J30J – 25TJN/ZKN – J  | 29.8 | 24.5 | 7.6 | 18.6 (TJN – J) | 20.0 (ZKN – J) | 20.2 |
| J30J – 31TJN/ZKN – J  | 33.6 | 28.3 | 7.6 | 22.4 (TJN – J) | 23.8 (ZKN – J) | 24.0 |
| J30J – 37TJN/ZKN – J  | 37.4 | 32.2 | 7.6 | 26.3 (TJN – J) | 27.7 (ZKN – J) | 27.8 |
| J30J – 51TJN/ZKN – J  | 36.4 | 30.8 | 8.7 | 25.0 (TJN – J) | 26.5 (ZKN – J) | 26.6 |
| J30J – 66TJN/ZKN – J  | 42.9 | 37.3 | 8.7 | 31.4 (TJN – J) | 32.9 (ZKN – J) | 33.0 |
| J30J – 74TJN/ZKN – J  | 38.8 | 33.5 | 9.7 | 27.5 (TJN – J) | 29.0 (ZKN – J) | 29.1 |
| J30J – 100TJN/ZKN – J | 54.7 | 45.7 | 9.7 | 35.0 (TJN – J) | 36.6 (ZKN – J) | 36.6 |

#### (4) Right Angle PCB

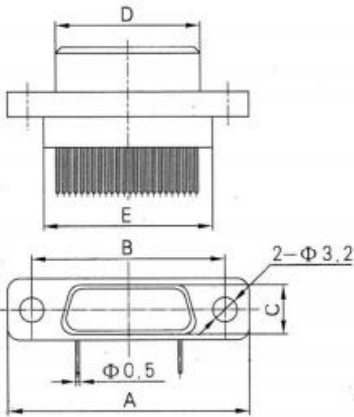


Grid Distance: 2.54\*2.54 cores: 9, 15, 21, 25, 31, 37

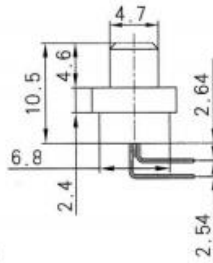


Grid Distance: 2.54\*2.54 cores: 51, 66

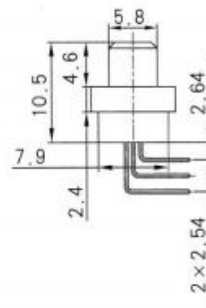
| Part number      | A    | B     | D          |            | E    |
|------------------|------|-------|------------|------------|------|
| J30J – 9TJW/ZKW  | 19.6 | 14.30 | 8.3 (TJW)  | 9.8 (ZKW)  | 9.9  |
| J30J – 15TJW/ZKW | 23.5 | 18.20 | 12.3 (TJW) | 13.7 (ZKW) | 13.8 |
| J30J – 21TJW/ZKW | 27.4 | 22.00 | 16.0 (TJW) | 17.4 (ZKW) | 17.6 |
| J30J – 25TJW/ZKW | 29.8 | 24.50 | 18.6 (TJW) | 20.0 (ZKW) | 20.2 |
| J30J – 31TJW/ZKW | 33.6 | 28.30 | 22.4 (TJW) | 23.8 (ZKW) | 24.0 |
| J30J – 37TJW/ZKW | 37.4 | 32.20 | 26.3 (TJW) | 27.7 (ZKW) | 27.8 |
| J30J – 51TJW/ZKW | 36.4 | 30.86 | 25.0 (TJW) | 26.5 (ZKW) | 26.6 |
| J30J – 66TJW/ZKW | 42.9 | 37.30 | 31.4 (TJW) | 32.9 (ZKW) | 33.0 |



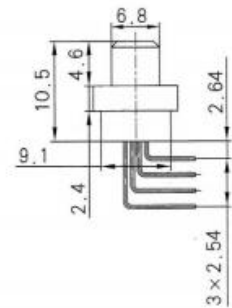
J30J-9~100TJW-J



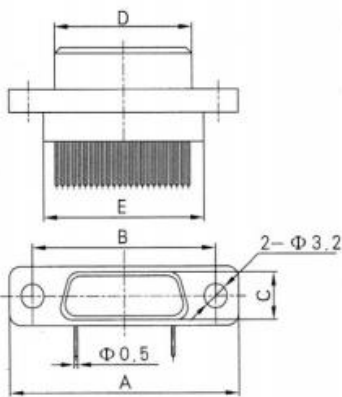
J30J-9~37TJW-J



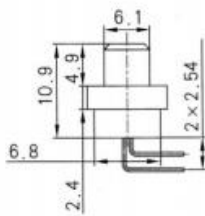
J30J-51, 66TJW-J



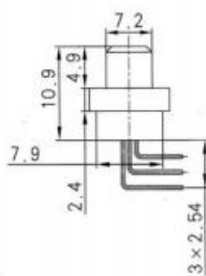
J30J-74, 100TJW-J



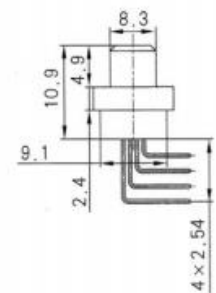
J30J-9~100ZKW-J



J30J-9~37ZKW-J



J30J-51, 66ZKW-J



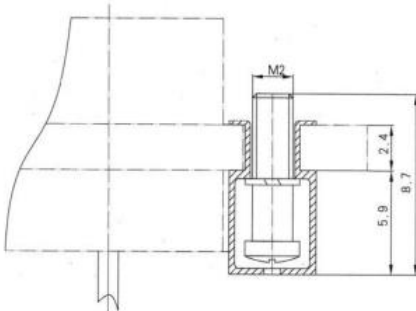
J30J-74, 100ZKW-J

Grid Distance: 1.27\*2.54

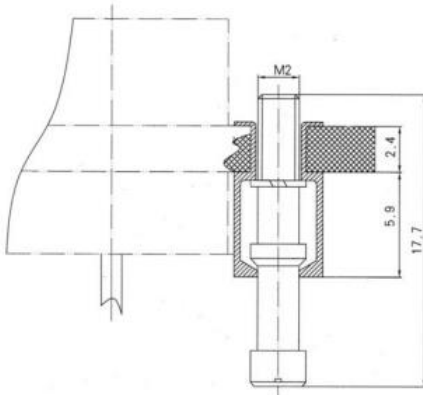
| Part number           | A    | B    | C   | D              |                | E    |
|-----------------------|------|------|-----|----------------|----------------|------|
|                       |      |      |     | 8.3 (TJW - J)  | 9.8 (ZKW - J)  |      |
| J30J - 9TJW/ZKW - J   | 19.6 | 14.3 | 7.6 | 8.3 (TJW - J)  | 9.8 (ZKW - J)  | 9.9  |
| J30J - 15TJW/ZKW - J  | 23.5 | 18.2 | 7.6 | 12.3 (TJW - J) | 13.7 (ZKW - J) | 13.8 |
| J30J - 21TJW/ZKW - J  | 27.4 | 22.0 | 7.6 | 16.0 (TJW - J) | 17.4 (ZKW - J) | 17.6 |
| J30J - 25TJW/ZKW - J  | 29.8 | 24.5 | 7.6 | 18.6 (TJW - J) | 20.0 (ZKW - J) | 20.2 |
| J30J - 31TJW/ZKW - J  | 33.6 | 28.3 | 7.6 | 22.4 (TJW - J) | 23.8 (ZKW - J) | 24.0 |
| J30J - 37TJW/ZKW - J  | 37.4 | 32.2 | 7.6 | 26.3 (TJW - J) | 27.7 (ZKW - J) | 27.8 |
| J30J - 51TJW/ZKW - J  | 36.4 | 30.8 | 8.7 | 25.0 (TJW - J) | 26.5 (ZKW - J) | 26.6 |
| J30J - 66TJW/ZKW - J  | 42.9 | 37.3 | 8.7 | 31.4 (TJW - J) | 32.9 (ZKW - J) | 33.0 |
| J30J - 74TJW/ZKW - J  | 38.8 | 33.5 | 9.7 | 27.5 (TJW - J) | 29.0 (ZKW - J) | 29.1 |
| J30J - 100TJW/ZKW - J | 54.7 | 45.7 | 9.7 | 35.0 (TJW - J) | 36.6 (ZKW - J) | 36.6 |

#### (4) Locking Accessory

Type: L

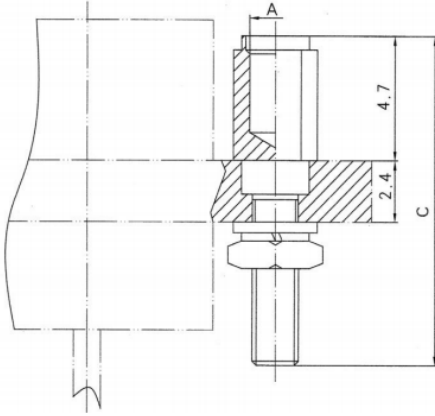


Type: K, K1



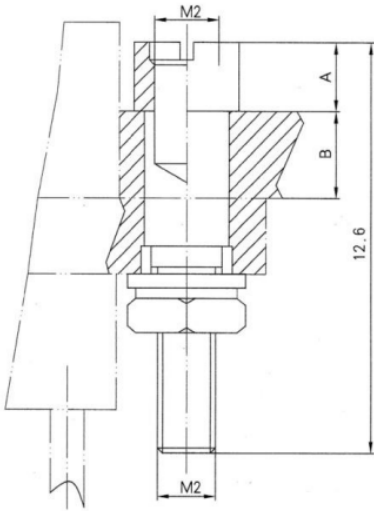
| Mark | A              |
|------|----------------|
| K    | M2-6H          |
| K1   | 0.086-56UNC-2A |

Type: P, P1, P8, P9



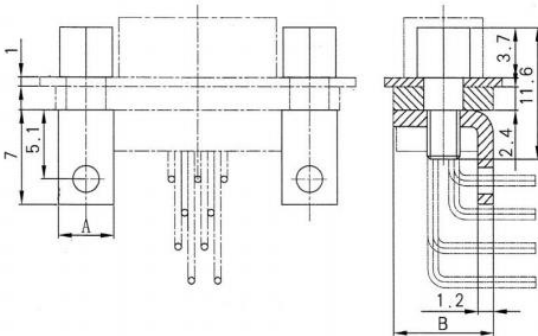
| mark | A              | B              | C    |
|------|----------------|----------------|------|
| P    | M2-6H          | M2-6H          | 12.6 |
| P1   | 0.086-56UNC-2B | 0.086-56UNC-2A | 12.6 |
| P8   | M2-6H          | M2-6H          | 15.6 |
| P9   | M2-6H          | M2-6H          | 21.6 |

Type: P0, P3, P4, P11



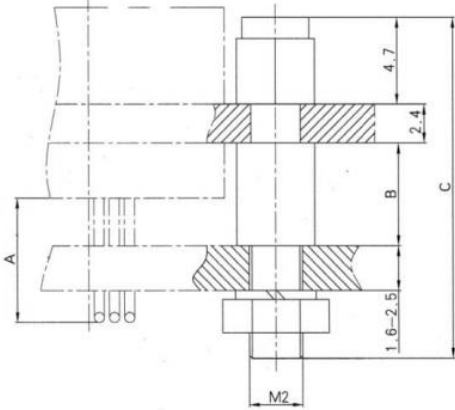
| mark | A   | B   |
|------|-----|-----|
| P0   | 4.1 | 0   |
| P3   | 3.3 | 1.4 |
| P4   | 2.5 | 2.2 |
| P11  | 1.3 | 3.4 |

Type: P2



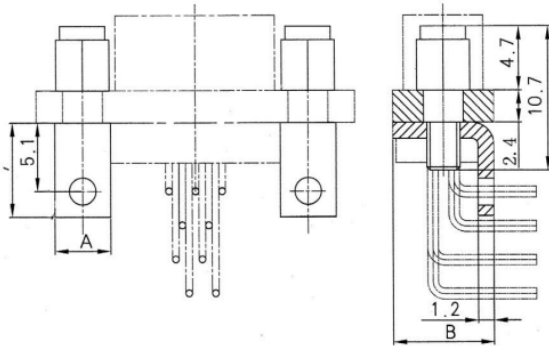
| Cores | A   | B   |
|-------|-----|-----|
| 9~37  | 4.2 | 7.6 |
| 51    | 4.2 | 8.7 |
| 74    | 4.2 | 9.7 |
| 100   | 8.8 | 9.7 |

Type: P5, P10



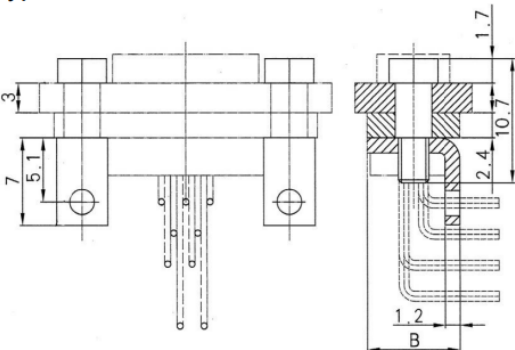
| mark | A   | B   | C    |
|------|-----|-----|------|
| P5   | 5.7 | 5.9 | 18.6 |
| P10  | 8.0 | 8.4 | 20.5 |

Type: P7



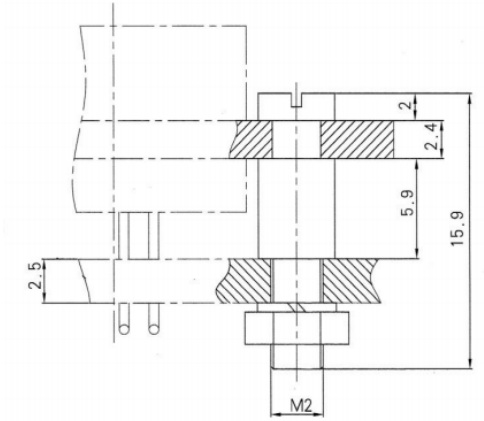
| core   | A   | B   |
|--------|-----|-----|
| 9 ~ 37 | 4.2 | 7.6 |
| 51     | 4.2 | 8.7 |
| 74     | 4.2 | 9.7 |
| 100    | 8.8 | 9.7 |

Type: P14

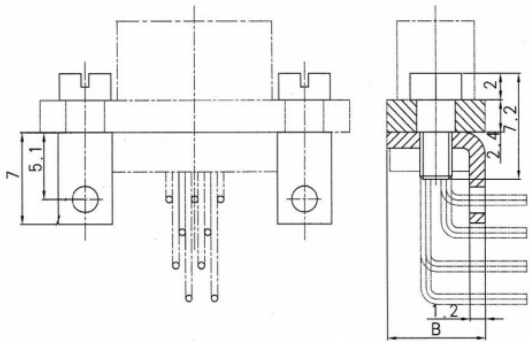


| core   | A   | B   |
|--------|-----|-----|
| 9 ~ 37 | 4.2 | 7.6 |
| 51     | 4.2 | 8.7 |
| 74     | 4.2 | 9.7 |
| 100    | 8.8 | 9.7 |

Type: V



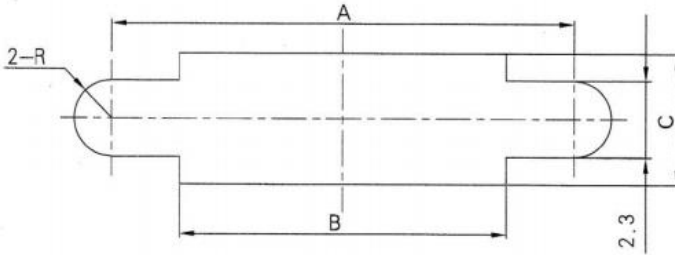
Type: VI



| Cores  | A   | B   |
|--------|-----|-----|
| 9 ~ 37 | 4.2 | 7.6 |
| 51     | 4.2 | 8.7 |
| 74     | 4.2 | 9.7 |
| 100    | 8.8 | 9.7 |

## 7. Size of Holes

Size of mounting before panel



| Part number | A     | B    | C   |
|-------------|-------|------|-----|
| J30J-9      | 14.3  | 10.2 | 7.0 |
| J30J-15     | 18.2  | 14.1 | 7.0 |
| J30J-21     | 22.0  | 17.9 | 7.0 |
| J30J-25     | 24.5  | 20.5 | 7.0 |
| J30J-31     | 28.3  | 24.3 | 7.0 |
| J30J-37     | 32.2  | 28.1 | 7.0 |
| J30J-51     | 30.86 | 26.9 | 8.1 |
| J30J-66     | 37.3  | 33.4 | 8.1 |
| J30J-74     | 33.5  | 29.4 | 9.3 |
| J30J-100    | 45.7  | 37   | 9.3 |

| Part number | A     | B    | C    |
|-------------|-------|------|------|
| J30J-9-AD   | 14.3  | 10.3 | 8.4  |
| J30J-15-AD  | 18.2  | 14.2 | 8.4  |
| J30J-21-AD  | 22.0  | 18.0 | 8.4  |
| J30J-25-AD  | 24.5  | 20.6 | 8.4  |
| J30J-31-AD  | 28.3  | 24.4 | 8.4  |
| J30J-37-AD  | 32.2  | 28.2 | 8.4  |
| J30J-51-AD  | 30.86 | 27.0 | 9.4  |
| J30J-66-AD  | 37.3  | 33.4 | 9.2  |
| J30J-74-AD  | 33.5  | 29.5 | 11.4 |
| J30J-100-AD | 45.7  | 37.2 | 11.4 |

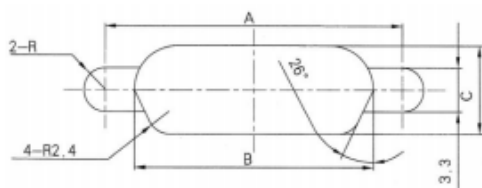
| Mark       | A     | B    | C    |
|------------|-------|------|------|
| J30J-9-A   | 14.3  | 10.3 | 8.4  |
| J30J-15-A  | 18.2  | 14.2 | 8.4  |
| J30J-21-A  | 22.0  | 18.0 | 8.4  |
| J30J-25-A  | 24.5  | 20.6 | 8.4  |
| J30J-31-A  | 28.3  | 24.4 | 8.4  |
| J30J-37-A  | 32.2  | 28.2 | 8.4  |
| J30J-51-A  | 30.86 | 27.0 | 9.4  |
| J30J-66-A  | 37.3  | 33.4 | 9.2  |
| J30J-74-A  | 33.5  | 29.5 | 11.4 |
| J30J-100-A | 45.7  | 37.2 | 11.4 |

| Mark       | A     | B    | C   |
|------------|-------|------|-----|
| J30J-9-D   | 14.3  | 10.2 | 7.0 |
| J30J-15-D  | 18.2  | 14.1 | 7.0 |
| J30J-21-D  | 22.0  | 17.9 | 7.0 |
| J30J-25-D  | 24.5  | 20.5 | 7.0 |
| J30J-31-D  | 28.3  | 24.3 | 7.0 |
| J30J-37-D  | 32.2  | 28.1 | 7.0 |
| J30J-51-D  | 30.86 | 26.9 | 8.1 |
| J30J-66-D  | 37.3  | 33.4 | 8.1 |
| J30J-74-D  | 33.5  | 29.4 | 9.3 |
| J30J-100-D | 45.7  | 37.0 | 9.3 |

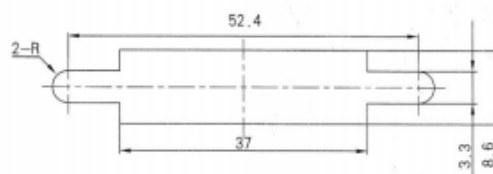


| Mark       | A    | B    | C   |
|------------|------|------|-----|
| J30J-9-Q   | 21.0 | 10.2 | 7.0 |
| J30J-15-Q  | 24.9 | 14.1 | 7.0 |
| J30J-21-Q  | 28.7 | 17.9 | 7.0 |
| J30J-25-Q  | 31.2 | 20.5 | 7.0 |
| J30J-31-Q  | 35.0 | 24.3 | 7.0 |
| J30J-37-Q  | 38.9 | 28.1 | 7.0 |
| J30J-51-Q  | 37.6 | 26.9 | 8.1 |
| J30J-66-Q  | 44.0 | 33.4 | 8.1 |
| J30J-74-Q  | 40.2 | 29.4 | 9.3 |
| J30J-100-Q | 52.4 | 37.0 | 9.3 |

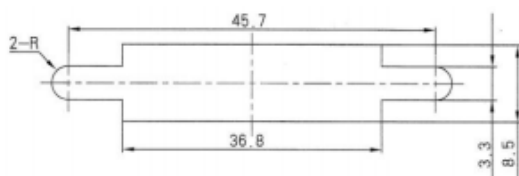
Size of mounting rear panel



J30J-9, 15, 21, 25, 31, 37, 51, 74



J30J-100TJ-Q/ZK-Q



J30J-100TJ/TJ-A/ZK/ZK-A

| Pat number | A     | B    | C   |
|------------|-------|------|-----|
| J30J-9     | 14.30 | 10.2 | 6.3 |
| J30J-15    | 18.20 | 14.1 | 6.3 |
| J30J-21    | 22.00 | 17.8 | 6.3 |
| J30J-25    | 24.50 | 20.4 | 6.3 |
| J30J-31    | 28.30 | 24.2 | 6.3 |
| J30J-37    | 32.20 | 28.1 | 6.3 |
| J30J-51    | 30.86 | 26.9 | 7.4 |
| J30J-66    | 37.30 | 33.4 | 7.4 |
| J30J-74    | 33.50 | 29.4 | 8.6 |

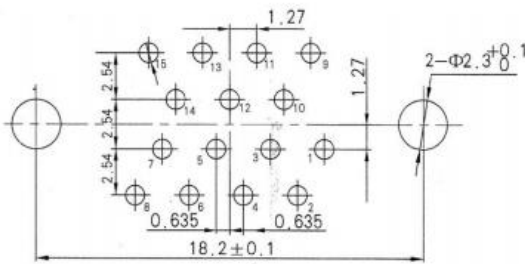
| Part number | A     | B    | C   |
|-------------|-------|------|-----|
| J30J-9-A    | 14.3  | 10.2 | 6.3 |
| J30J-15-A   | 18.2  | 14.1 | 6.3 |
| J30J-21-A   | 22.0  | 17.8 | 6.3 |
| J30J-25-A   | 24.5  | 20.4 | 6.3 |
| J30J-31-A   | 28.3  | 24.2 | 6.3 |
| J30J-37-A   | 32.2  | 28.1 | 6.3 |
| J30J-51-A   | 30.86 | 26.9 | 7.4 |
| J30J-66-A   | 37.3  | 33.4 | 7.4 |
| J30J-74-A   | 33.5  | 29.4 | 8.6 |

| Part number | A    | B    | C   |
|-------------|------|------|-----|
| J30J-9-Q    | 21   | 10.2 | 6.3 |
| J30J-15-Q   | 24.9 | 14.1 | 6.3 |
| J30J-21-Q   | 28.7 | 17.9 | 6.3 |
| J30J-25-Q   | 31.2 | 20.5 | 6.3 |
| J30J-31-Q   | 35   | 24.3 | 6.3 |
| J30J-37-Q   | 38.9 | 28.1 | 6.3 |
| J30J-51-Q   | 37.6 | 26.9 | 7.4 |
| J30J-66-Q   | 44   | 33.4 | 7.4 |
| J30J-74-Q   | 40.2 | 29.4 | 8.6 |

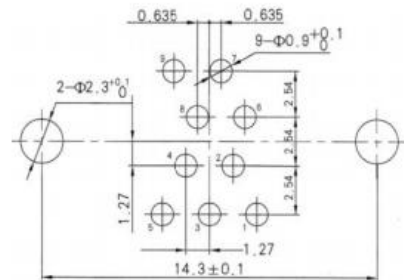
## 8. J30J PCB Hole Sizes

J30J- $\times$ TJN (Grid distance 2.54 $\times$ 2.54)

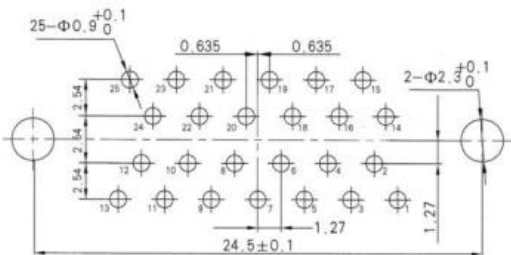
J30J-9TJN



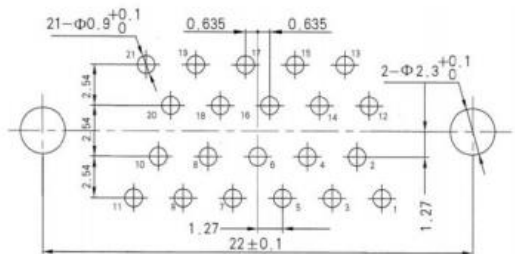
J30J-15TJN



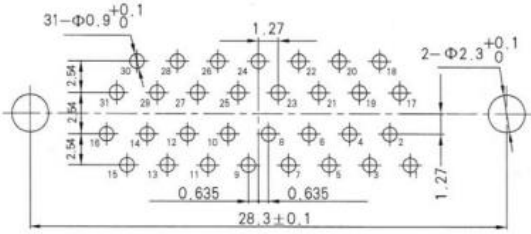
J30J-21TJN



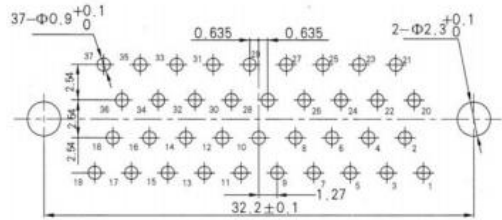
J30J-25TJN



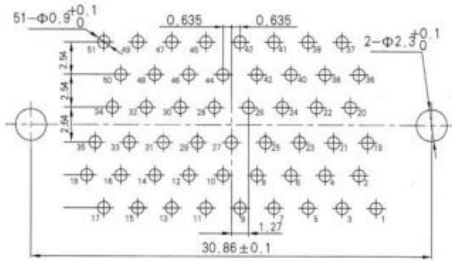
J30J-31TJN



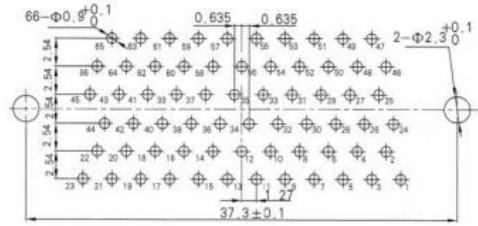
J30J-37TJN



J30J-51TJN

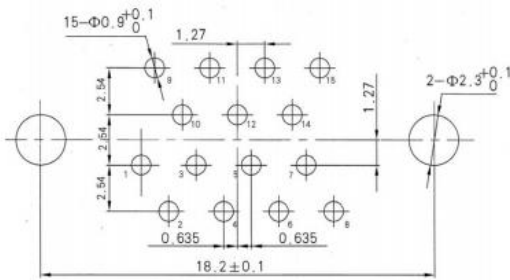


J30J-66TJN

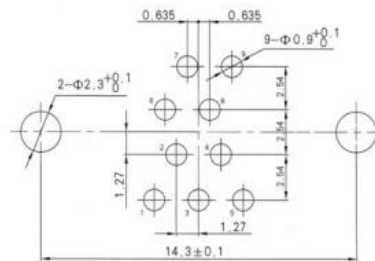


J30J-×ZKN(Grid distance 2.54×2.54)

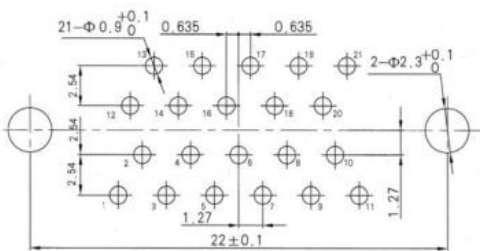
J30J-9ZKN



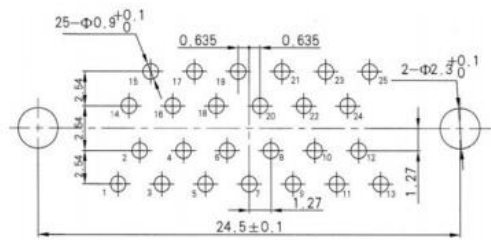
J30J-15ZKN



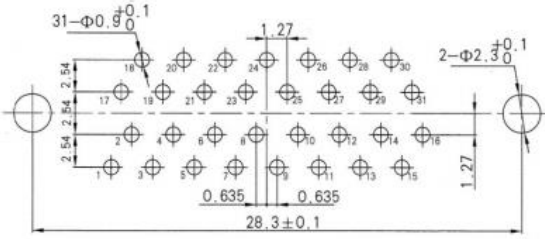
J30J-21ZKN



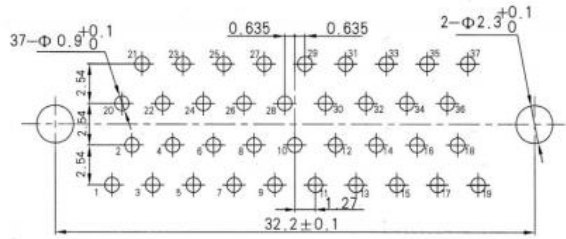
J30J-25ZKN



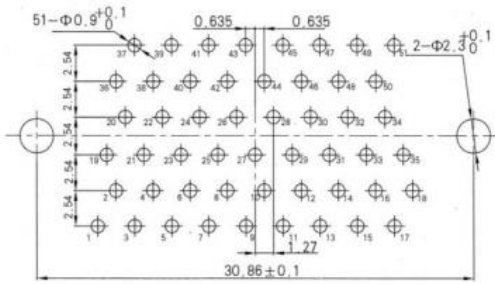
J30J-31ZKN



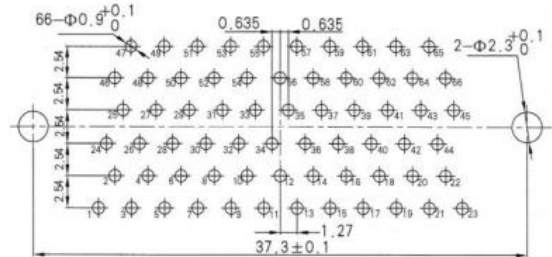
J30J-37ZKN



J30J-51ZKN

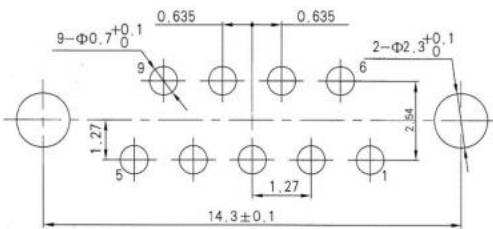


J30J-66ZKN

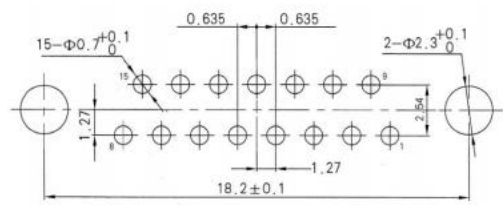


J30J-xTJN-J(Grid distance 1.27×2.54)

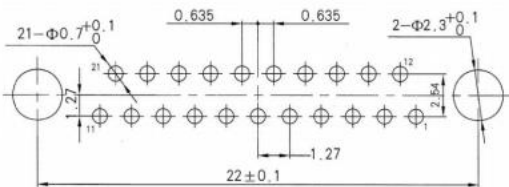
J30J-9TJN-J



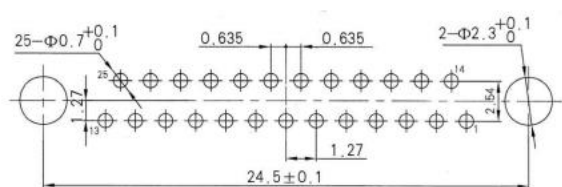
J30J-15TJN-J



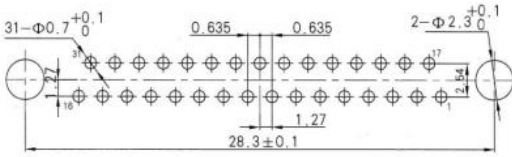
J30J-21TJN-J



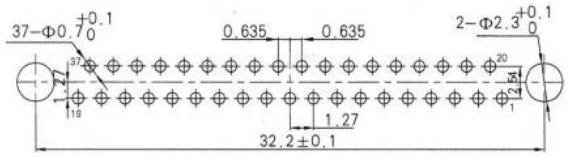
J30J-25TJN-J



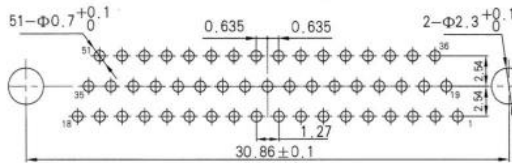
J30J-31TJN-J



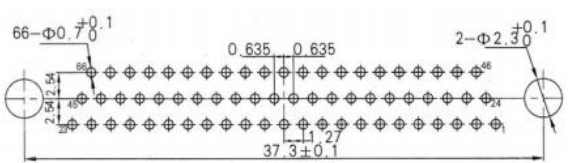
J30J-37TJN-J



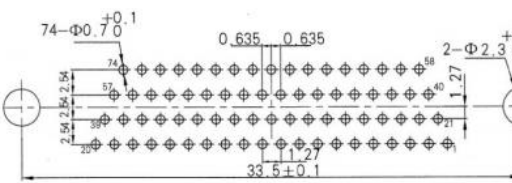
J30J-51TJN-J



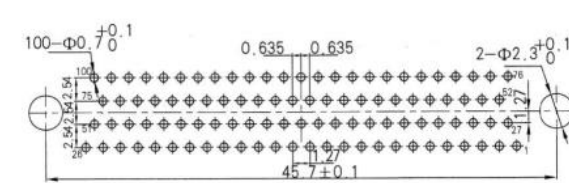
J30J-66TJN-J



J30J-74TJN-J

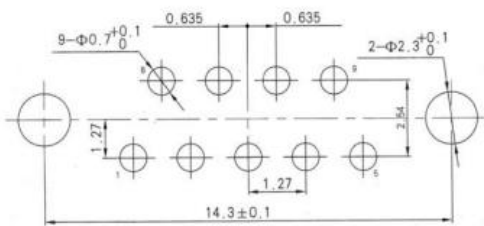


J30J-100TJN-J

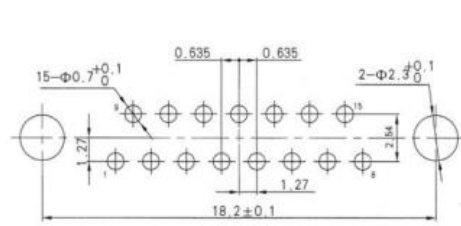


J30J-xZKN-J

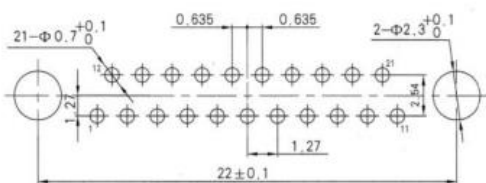
J30J-9ZKN-J



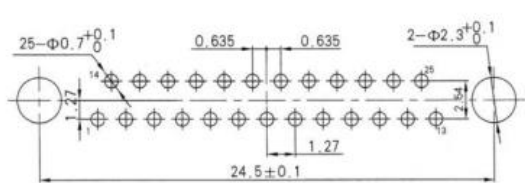
J30J-15ZKN-J



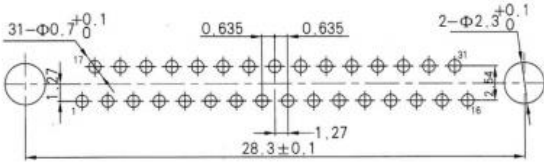
J30J-21ZKN-J



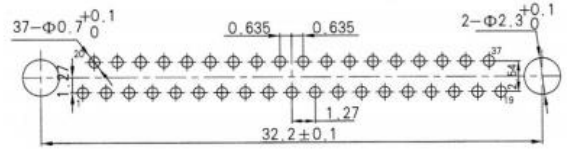
J30J-25ZKN-J



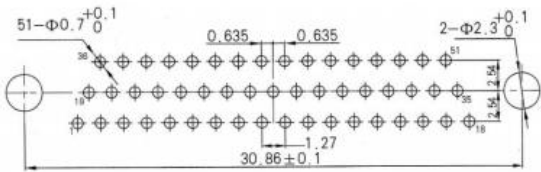
J30J-31ZKN-J



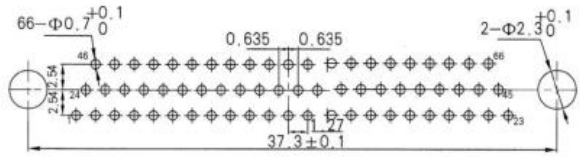
J30J-37ZKN-J



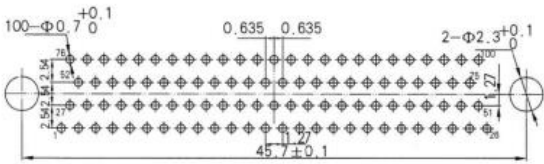
J30J-51ZKN-J



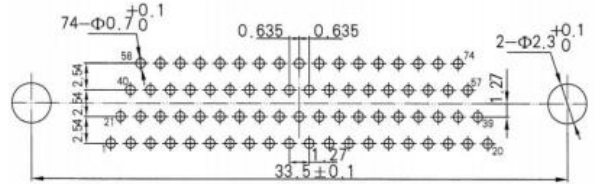
J30J-66ZKN-J



J30J-74ZKN-J

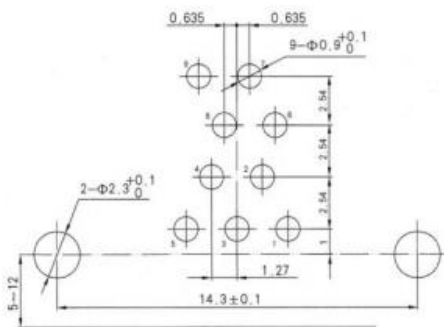


J30J-100ZKN-J

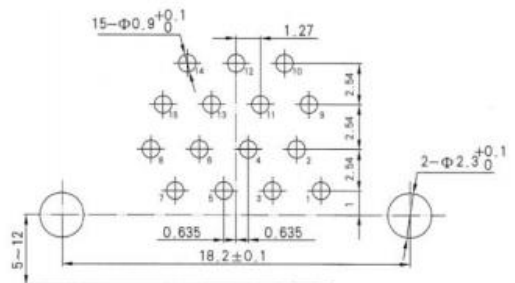


J30J-xTJW (Grid distance  $2.54 \times 2.54$ )

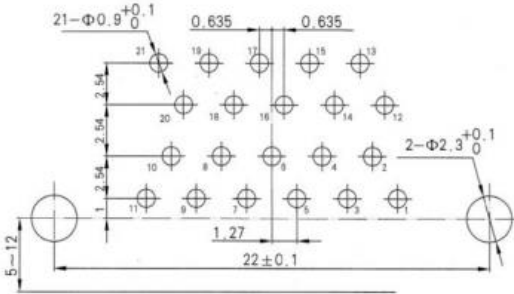
J30J-9TJW



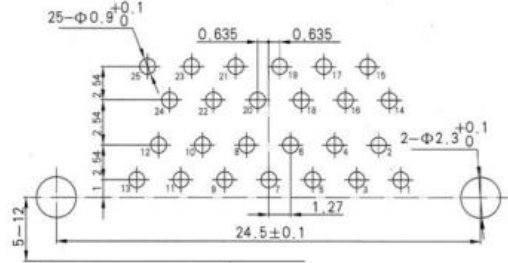
J30J-15TJW



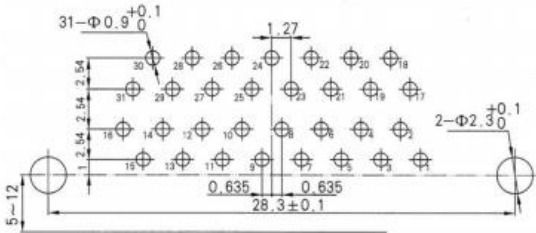
J30J-21TJW



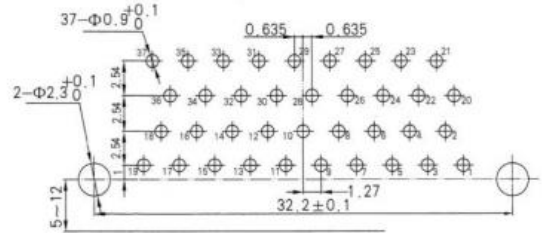
J30J-25TJW



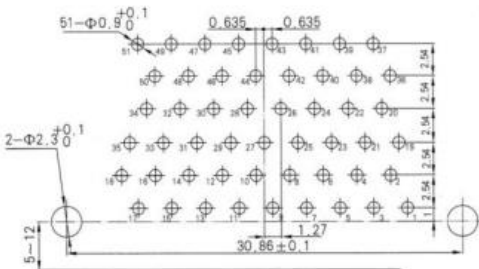
J30J-31TJW



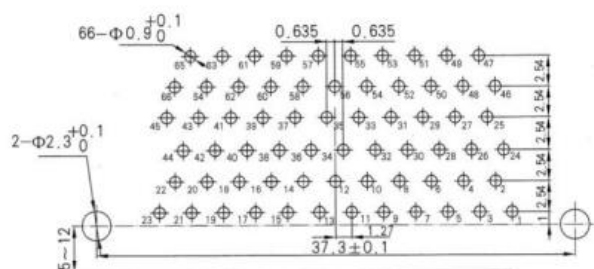
J30J-37TJW



J30J-51TJW

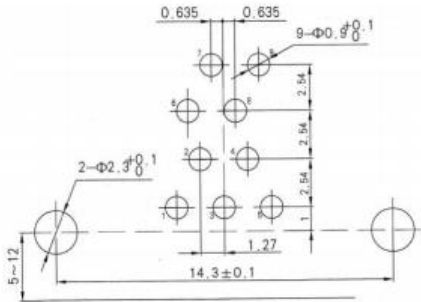


J30J-66TJW

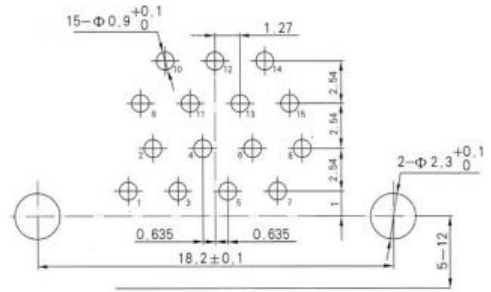


J30J-xZKW (Grid distance 2.54×2.54)

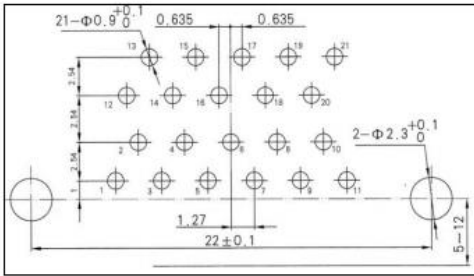
J30J-9ZKW



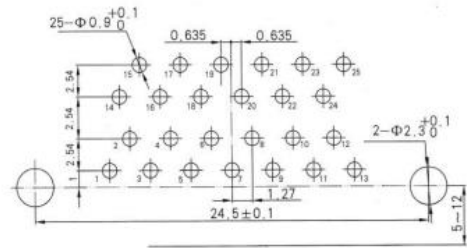
J30J-15ZKW



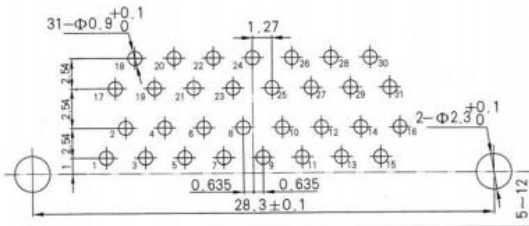
J30J-21ZKW



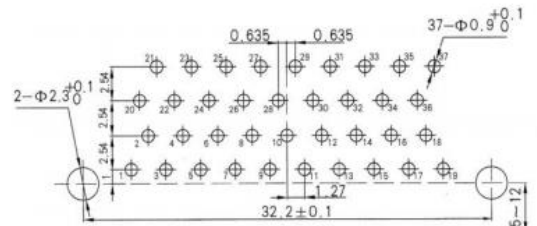
J30J-25ZKW



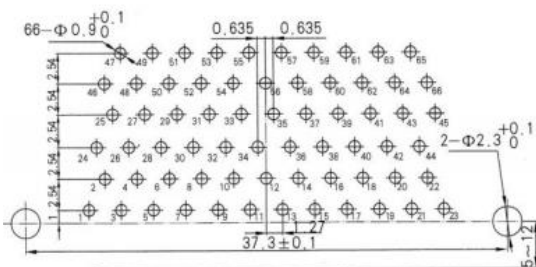
J30J-31ZKW



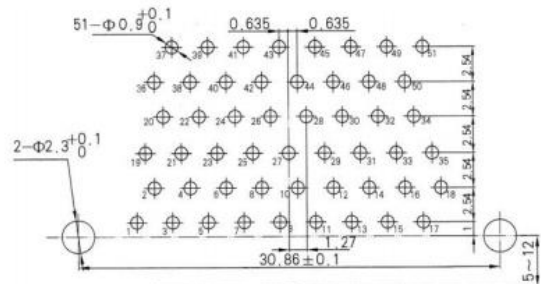
J30J-37ZKW



J30J-51ZKW



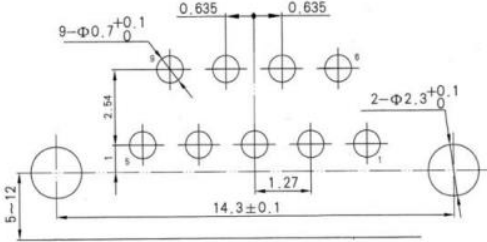
J30J-66ZKW



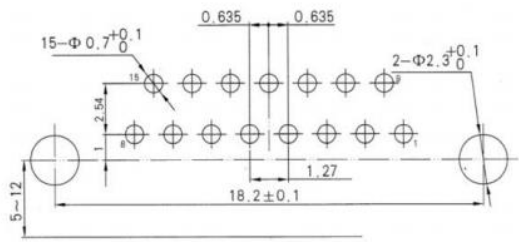


J30J-xTJW-J (Grid distance 1.27×2.54)

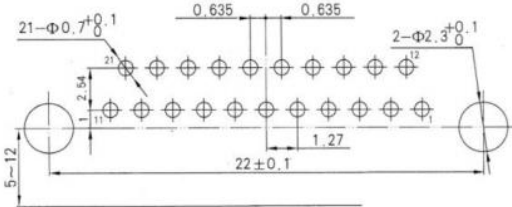
J30J-9TJW-J



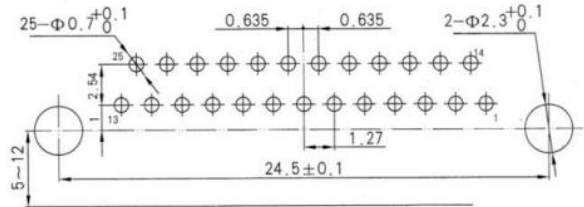
J30J-15TJW-J



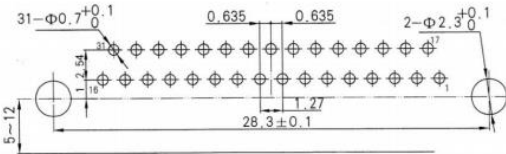
J30J-21TJW-J



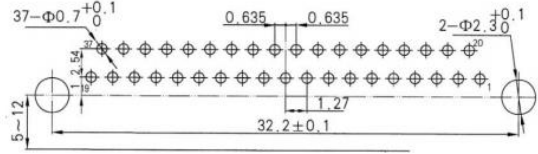
J30J-25TJW-J



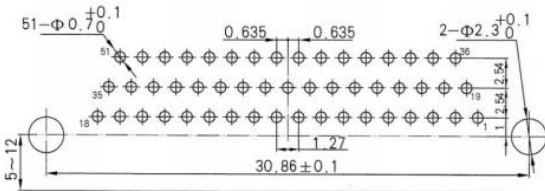
J30J-31TJW-J



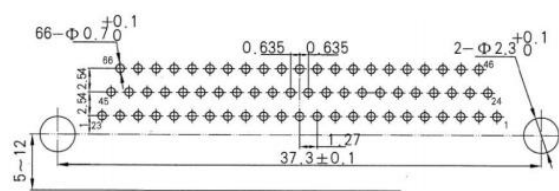
J30J-37TJW-J



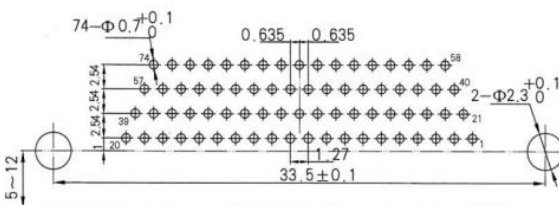
J30J-51TJW-J



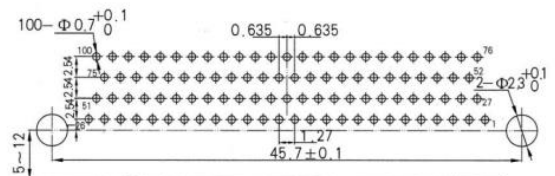
J30J-66TJW-J



J30J-74TJW-J



J30J-100TJW-J



J30J-xZKW-J (Grid distance 1.27×2.54)

