

# M8 Female Connector, Panel Mount, PCB Type, Rear fastened

## Features:

- Threaded Coupling
- IP67 (Rating)
- Pollution Degree: 3
- Products Comply With IEC 61076-2-101 Industry 4.0 Agreement, NEMA2000 Standard



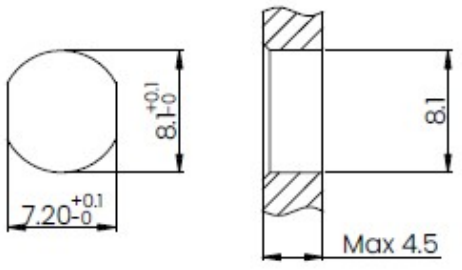
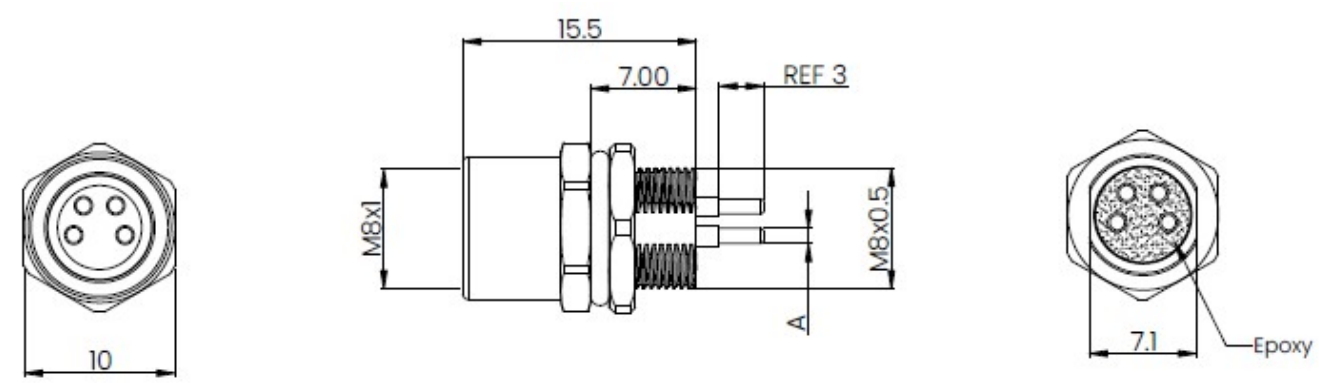
Electrical Specifications					
Contacts	3	4	5	6	8
Rated Current (A)	3	3	3	1.5	1.5
Rated Voltage (AC,V)	60	60	60	30	30
Rated Pulse Voltage (AC,V)	800	800	800	800	800
Insulation Resistance (MΩ)	≥100	≥100	≥100	≥100	≥100
Contact Resistance (mΩ)	≤3	≤3	≤3	≤3	≤3

Mechanical Specifications	
Mating Cycles	500 Min
Coupling Mechanism	Threaded
Interface Specification	IEC 61076-2-101

Environmental Specifications	
Temperature Range	-20°C to +85°C

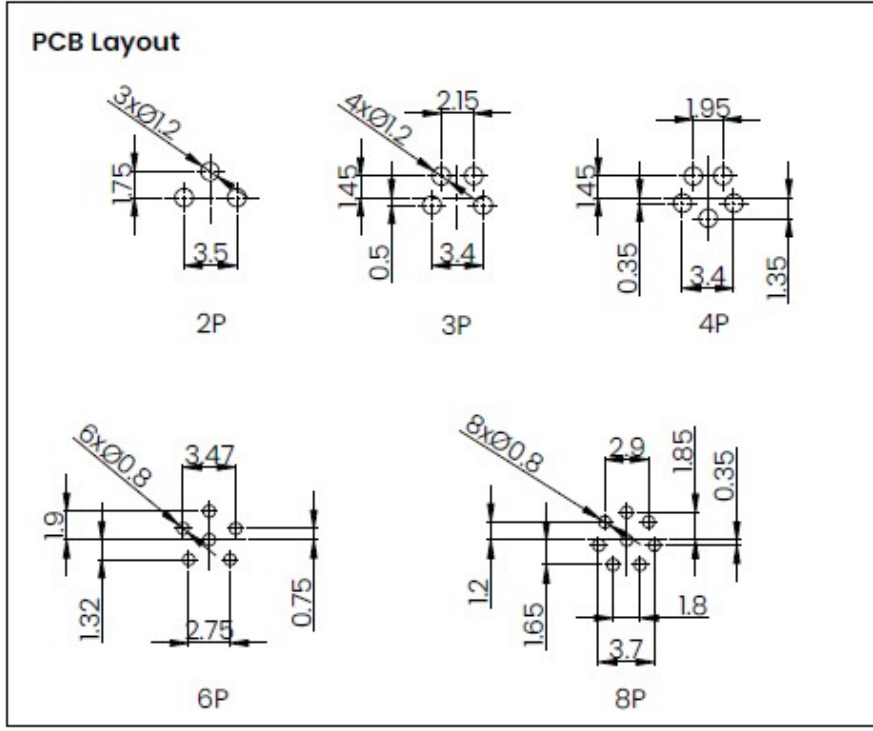
Material Specifications	
Shell	Brass, Nickel Plating
Insulator	PA66 UL94-V0, Black
Contacts	Copper Alloy, Gold Plating
Sealing Ring	NBR, Black
Nut	Brass, Nickel Plating

**Drawing**



Recommended Panel cut-out

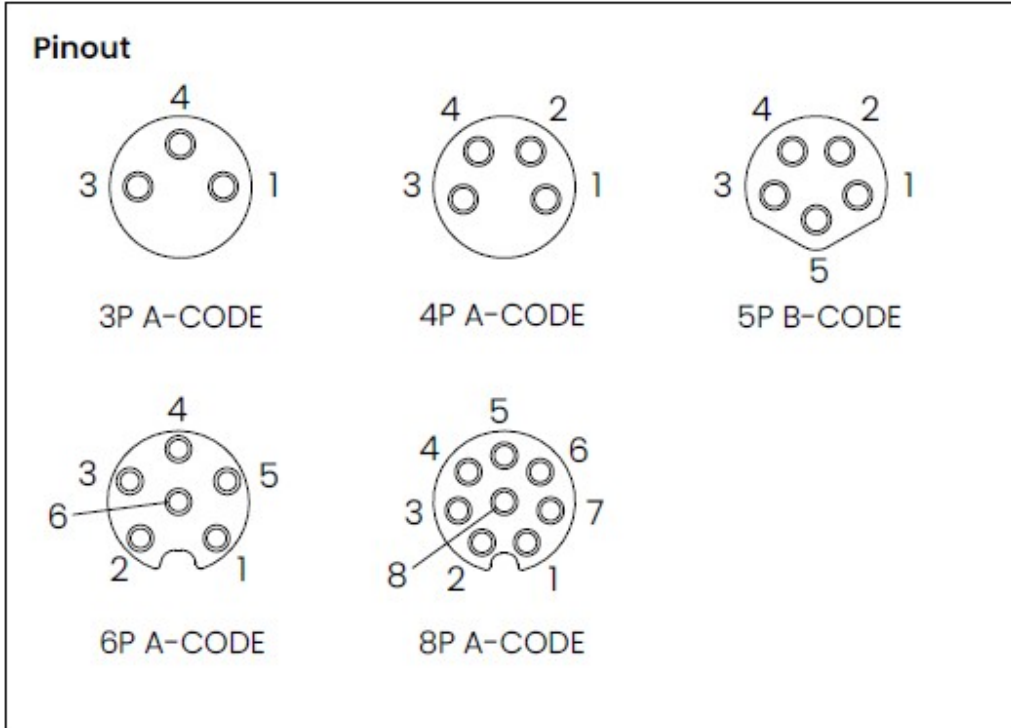
Pin Size  
A:  
3-5P: Ø1  
6-8P: Ø0.6



**DISCLAIMER**

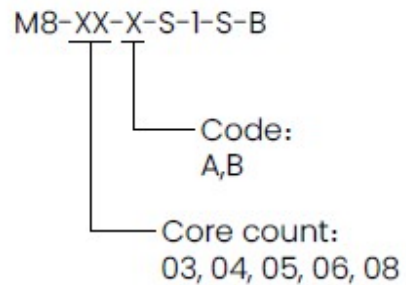
The information in this specification is subject to change without notice. Please confirm the latest version before use. Technical parameters are for reference only, and sufficient testing and verification should be conducted in actual applications.

**Part Number**



UNLESS OTHERWISE SPECIFIED  
 TOLERANCES FOR MILLIMETERS  
 ARE:  
 0.5 - 8mm ± 0.20mm  
 8 - 30mm ± 0.25mm  
 30 -120mm ± 0.30mm

**Part Number:**



**Disclaimer**

The information in this specification is subject to change without notice. Please confirm the latest version before use. Technical parameters are for reference only, and sufficient testing and verification should be conducted in actual applications.