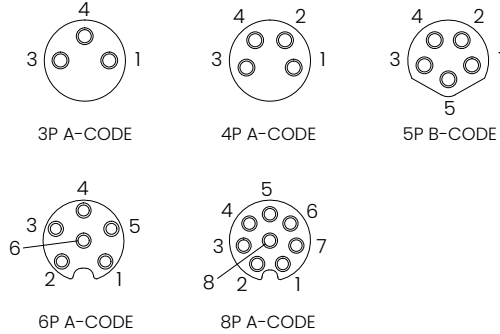


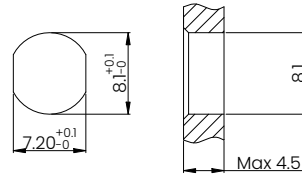
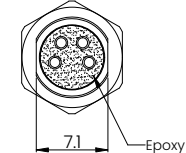
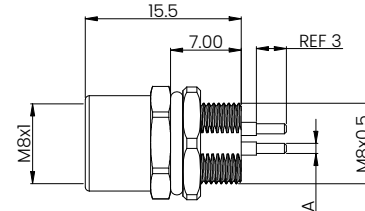
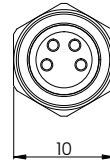
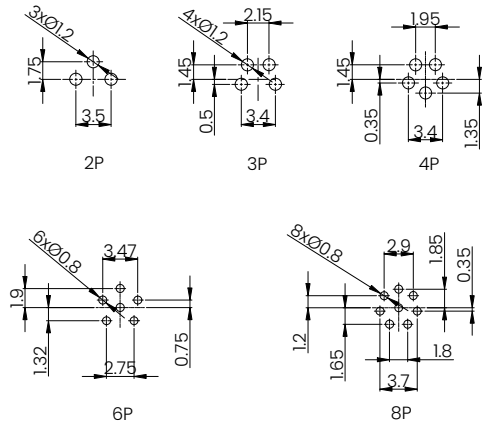


REV	DESCRIPTION	DATE	APPROVEN
R1.0	First issue	2024/03/12	JIM.KING

**Pinout**



**PCB Layout**



Recommended Panel cut-out

Pin Size  
A:  
3-5P : Ø1  
6-8P: Ø0.6

**Part Number:**

M8-XX-X-S-1-S-B

Code:  
A,B

Core count:  
03, 04, 05, 06, 08

Technical Specifications	
Coupling	Threaded Coupling
Termination	Screw
Pollution Degree	3
Mating Cycles	≥500
IP Rating	IP67 When Mated
Temperature Range	-25°C ~ +80°C

Core count	3	4	5	6	8
Rated Voltage/Current	3A/60V	3A/60V	3A/30V	1.5A/30V	1.5A/30V
Rated Pulse Voltage	800V	800V	800V	800V	800V
Insulation Resistance (MΩ)	≥100	≥100	≥100	≥100	≥100
Contact Resistance (mΩ)	≤3	≤3	≤3	≤3	≤3

5	Nut	Brass	Nickel Plating	1
4	Sealing Ring	NBR	Black	1
3	Center Pin	Copper Alloy	Gold Plating	/
2	Insulator	PA66 UL94-V0	Black	1
1	Shell	Brass	Nickel Plating	1
NO	DESCRIPTION	MATERIAL	FINISH	QTY

-TOLERANCES-  
UNLESS OTHERWISE  
SPECIFIED

UNLESS OTHERWISE SPECIFIED  
TOLERANCES FOR MILLIMETERS  
ARE:  
0.5 - 8mm ± 0.20mm  
8 - 30mm ± 0.25mm  
30 - 120mm ± 0.30mm

**Metabee (Chengdu) Technology Co., Ltd.**  
Tel: +8615926241606 E-mail: Sales@metabeeai.com

**PART DESCRIPTION: M8 Female Connector, Panel Mount, PCB Type, Rear fastened**

Appd:	Jim.king	P/N:			
Check:		Date	Scale	Unit	Page
Draw:	Gavin	2024.03.12	Free	MM	1/1