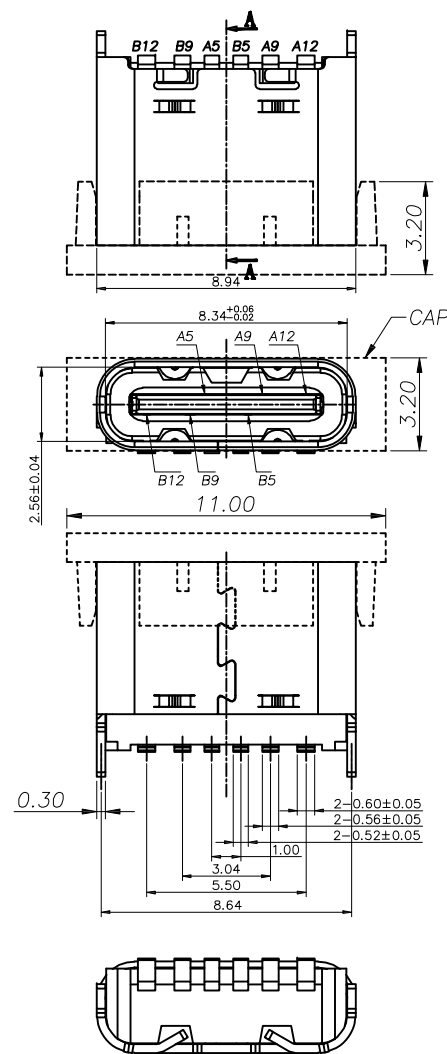


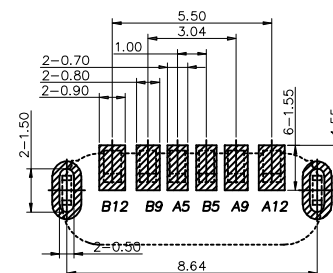
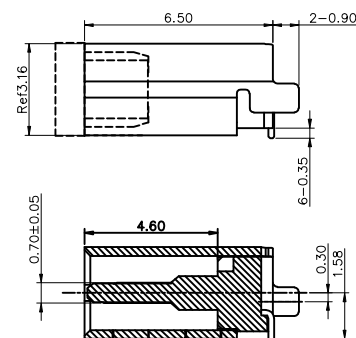
DATE: \_\_\_\_\_ TITLE: \_\_\_\_\_

Rev	AWO #	Description	Date	Appr
-		RELEASED	2/23/22	
A		UPDATE TITTLE	8/19/24	LH/RC



## ASSIGNMENTS

Environmental:  
Lead free, RoHS compliant.



PACKAGED ON TAPE & REEL

PIN NUMBER	SIGNAL NAME
A5	CC1
A9	VBUS
A12	GND
B12	GND
B9	VBUS
B5	CC2

UNLESS OTHERWISE SPECIFIED ALL DIMENSIONS  
ARE MILLIMETERS. TOLERANCES: EXCEPT AS NOTED

	MM	
.X	±	0.30
.XX	±	0.20
.XXX	±	0.10

DRAWN	JJ	2/23/22
CHECKED	KC	2/23/22
APPROVED		

THIS DRAWING CONTAINS INFORMATION THAT IS PROPRIETARY  
AND SHOULD NOT BE USED WITHOUT PRIOR WRITTEN  
PERMISSION FROM ADAM TECH



TITLE	UNIVERSAL SERIAL BUS C TYPE, RECEPTACLE VERTICAL SMT. POWER. 6P
-------	--

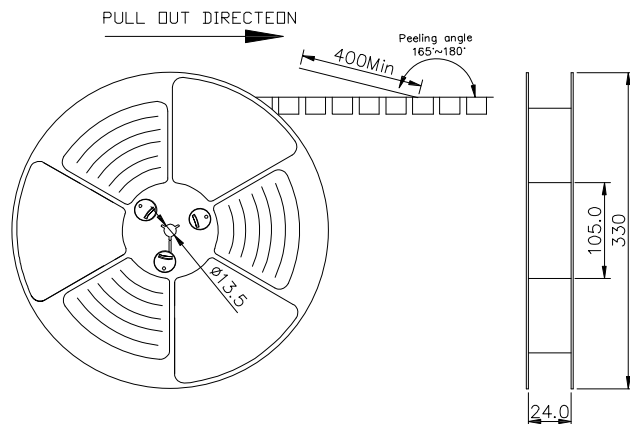
SIZE	PART NO.	REV
X	USB-C20-S-VT-CS13-SMT-BK-PP-T/R	A

REF: S00192C	SCALE: NTS	SHEET 1 OF 2
--------------	------------	--------------

APPROVED: \_\_\_\_\_

DATE: \_\_\_\_\_ TITLE: \_\_\_\_\_

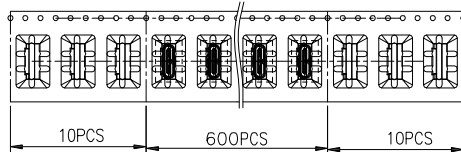
Rev	AWO #	Description	Date	Appr
SEE SHT 1 OF 2 FOR REVISION				



#### NOTES

1. LEAD TAPE LENGTH

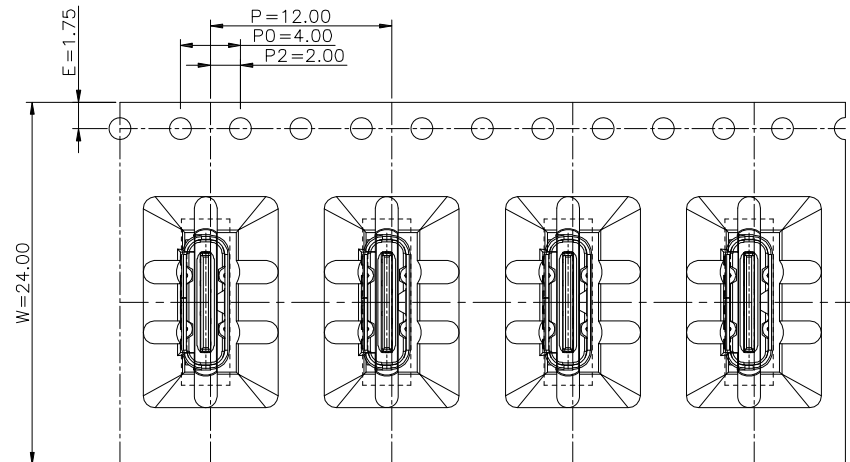
PULL OUT DIRECTEON PULL OUT DIRECTEON



2. PEELING OFF FORCE OF TOP TAPE: 0.1~1.3N (10.2gf~130gf)

THIS REQUIREMENT SHOULD BE APPLIED AT SHIPMENT:

PFFLING OFF SHOULD NOT BF ALLOWFD DURING TRANSPORTATION



TAPE & REEL 10 PCS


1 REEL  
= 600 PCS

BOX

DIMENSIONS:  
33.5X33.5X30.5

LABEL

1 CARTON  
= 10 REELS  
= 6000 PCS

UNLESS OTHERWISE SPECIFIED ALL DIMENSIONS ARE MILLIMETERS. TOLERANCES: EXCEPT AS NOTED					
	MM		TITLE UNIVERSAL SERIAL BUS C TYPE, RECEPTACLE VERTICAL SMT, POWER, 6P		
.X	± 0.30				
.XX	± 0.20		SIZE	PART NO.	REV.
.XXX	± 0.10		X	USB-C20-S-VT-CS13-SMT-BK-PP-T/R	A
DRAWN	JJ	2/23/22	REF:	S00192C	SCALE: NTS
CHECKED	KC	2/23/22	SHEET 2 OF 2		
APPROVED					
THIS DRAWING CONTAINS INFORMATION THAT IS PROPRIETARY AND SHOULD NOT BE USED WITHOUT PRIOR WRITTEN PERMISSION FROM ADAM TECH					