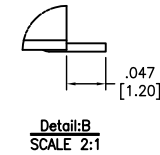
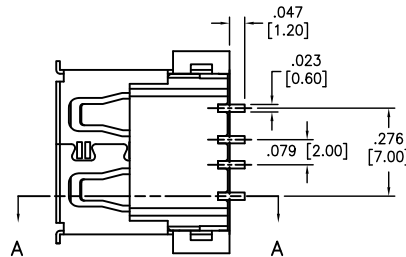
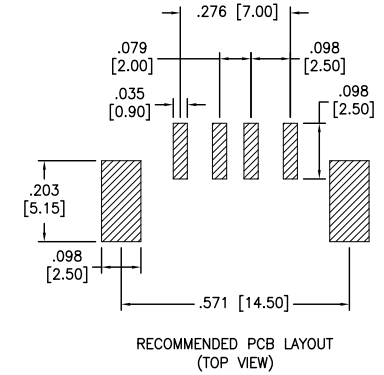
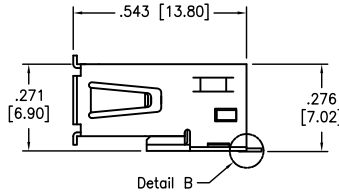
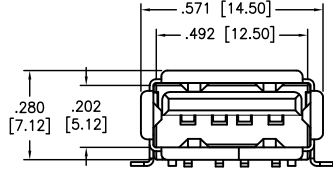
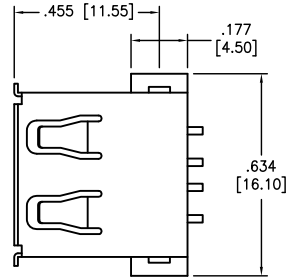


APPROVED: \_\_\_\_\_  
 DATE: \_\_\_\_\_ TITLE: \_\_\_\_\_

Rev	AWO #	Description	Date	Appr
-		RELEASED	2/5/09	
A		REVISED DIM.	1/10/11	
B		REVISED SPEC.	5/30/11	
C		UPDATED SPEC.	8/19/15	HR/NC
D		UPDATED SPEC.	2/18/16	HR/AY1



**SPECIFICATIONS:**

Material:  
 Insulator: LCP, rated UL 94V-0  
 Insulator color: Black  
 Contacts: Brass  
 Shell: Copper Alloy, nickel/Tin plated  
 Contact Plating:  
 Gold flash over Nickel on mating area,  
 Tin over Copper underplate on tails.

Electrical:  
 Operating voltage: 30 VAC max.  
 Current rating: 1.5 Amps max.  
 Contact resistance: 30 mohms max.  
 Insulation resistance: 1000 Mohms min. @ 500 VDC  
 Dielectric withstanding voltage: 500 VAC for 1 minute

Mechanical:  
 Insertion force: 35 Newtons max.  
 Withdrawal force: 10 Newtons min.  
 Temperature Rating:  
 Operating temperature: -40°C~+85°C  
 Environmental:  
 Lead free, RoHS compliant.



UNLESS OTHERWISE SPECIFIED ALL DIMENSIONS ARE INCHES [MM] TOLERANCES: EXCEPT AS NOTED			
INCHES		HOLES	
.X	± .10	∅.X	± .10
.XX	± .020	∅.XX	± .015
.XXX	± .015	∅.XXX	± .010
APPROVALS		DATE	
DRAWN	SS	2/5/09	
CHECKED			
APPROVED			

TITLE: USB TYPE A, RIGHT ANGLE, TRUE SURFACE MOUNT, NO PEG			
SIZE	PART NO.	REV.	
X	USB-A-S-RA-TSMT-NP	D	
REF:	S00005C	SCALE:	NTS
		SHEET 1 OF 1	