

6

5

4

3

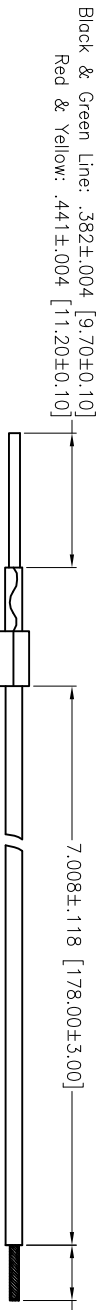
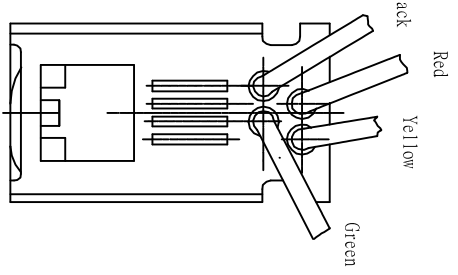
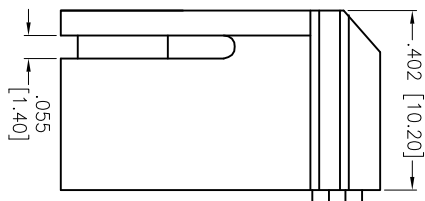
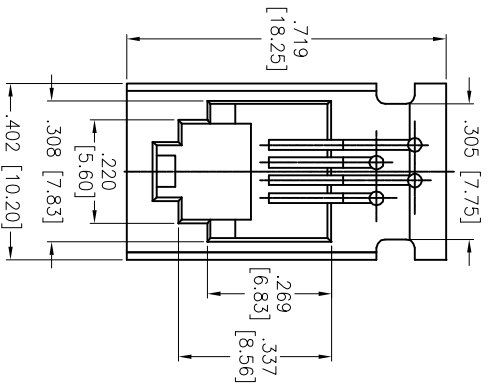
2

1

APPROVED: _____
 DATE: _____ TITLE: _____

THIS IS A CUSTOM CABLE PRODUCT THAT IS NON-CANCELABLE / NON-RETURNABLE

Rev	AWO #	Description	Date	Appr
-	9929	RELEASED	12/18/09	
A		REDRAWN	05/24/12	



Striped & Tinned
 .256±.039 [6.50±1.00]

Black & Green Line: .382±.004 [9.70±0.10]
 Red & Yellow: .441±.004 [11.20±0.10]

SPECIFICATIONS:

Material:
 Insulator: ABS, rated UL 94V-0
 Insulator color: Deep Grey
 Contacts: Phosphor Bronze
 Wire: 26 Awg, UL 1061
 PVC Coated

Plating:
 Gold over Nickel underplate on mating area
 (See plating chart for thickness)

Electrical:
 Operation voltage: 150 VAC max
 Current rating: 1.5 Amps max
 Insulation resistance: 1000 Mohms min @ 500 VDC
 Dielectric withstanding voltage: 1000 VAC for 1 minute
Environmental:
 Operating temperature: -40°C to +70°C
 Lead free, RoHS compliant.

X	PLATING
0	15 μ" Gold
1	30 μ" Gold
2	50 μ" Gold

UNLESS OTHERWISE SPECIFIED
 ALL DIMENSIONS ARE INCHES [MM]
 TOLERANCES: EXCEPT AS NOTED
 INCHES HOLE SIZES ±.10
 .XX ±.020 ØXXX ±.015
 .XXX ±.015 ØXXX ±.010
 APPROVALS DATE



TITLE: WIRED JACK, 616L, PANEL MOUNT
 COLOR GRAY

DRAWN	DRY	12/18/09
CHECKED		
APPROVED		

SIZE	PART NO.	REV.
X	MTJP-616L-X-A1-2	A
REF:	S00003C	SCALE: NTS
		SHEET 1 OF 1

6

5

4

3

2

1